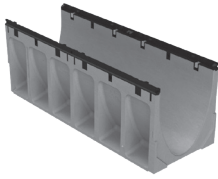


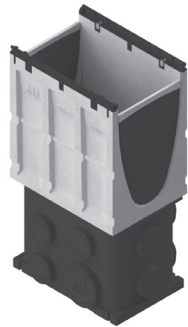
SK300K Channel -  
39.37" (1 m)



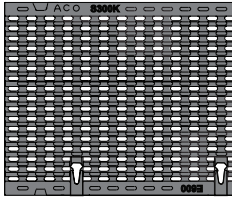
SK300K Channel -  
19.69" (0.5 m)



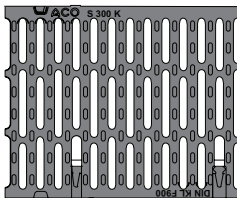
SK3-903D In-line Catch Basin



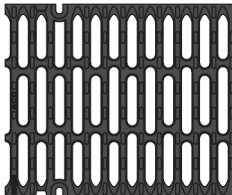
SK3 Ductile Iron  
Longitudinal Grate



SK3 Ductile Iron  
Slotted Grate



SK3 Ductile Iron  
4-bolt Grate\*



**PowerDrain® S300K Parts Table**

	Part No.	Price \$	Weight lbs	Pallet Qty
SK3-00 Constant depth channel - 39.37" (1 m) <sup>1</sup>	69041	<b>653.00</b>	140.0	9
SK3-1 Sloped channel - 39.37" (1 m)	69001	<b>653.00</b>	140.0	9
SK3-2 Sloped channel - 39.37" (1 m)	69002	<b>653.00</b>	141.3	9
SK3-3 Sloped channel - 39.37" (1 m)	69003	<b>653.00</b>	142.8	9
SK3-4 Sloped channel - 39.37" (1 m)	69004	<b>653.00</b>	144.1	9
SK3-5 Sloped channel - 39.37" (1 m) <sup>1</sup>	69005	<b>653.00</b>	145.4	9
SK3-6 Sloped channel - 39.37" (1 m)	69006	<b>653.00</b>	146.9	9
SK3-7 Sloped channel - 39.37" (1 m)	69007	<b>653.00</b>	148.2	9
SK3-8 Sloped channel - 39.37" (1 m)	69008	<b>653.00</b>	149.5	9
SK3-9 Sloped channel - 39.37" (1 m)	69009	<b>653.00</b>	150.9	9
SK3-10 Sloped channel - 39.37" (1 m) <sup>1</sup>	69010	<b>653.00</b>	152.3	9
SK3-010 Constant depth channel - 39.37" (1 m) <sup>1</sup>	69042	<b>653.00</b>	152.3	9
SK3-0103 Constant depth channel - 19.69" (0.5 m) <sup>1</sup>	69045	<b>406.00</b>	84.2	18
SK3-11 Sloped channel - 39.37" (1 m)	69011	<b>653.00</b>	153.6	9
SK3-12 Sloped channel - 39.37" (1 m)	69012	<b>653.00</b>	155.0	9
SK3-13 Sloped channel - 39.37" (1 m)	69013	<b>653.00</b>	156.4	9
SK3-14 Sloped channel - 39.37" (1 m)	69014	<b>653.00</b>	157.7	9
SK3-15 Sloped channel - 39.37" (1 m) <sup>1</sup>	69015	<b>653.00</b>	159.1	9
SK3-16 Sloped channel - 39.37" (1 m)	69016	<b>653.00</b>	160.5	9
SK3-17 Sloped channel - 39.37" (1 m)	69017	<b>653.00</b>	161.9	9
SK3-18 Sloped channel - 39.37" (1 m)	69018	<b>653.00</b>	163.2	9
SK3-19 Sloped channel - 39.37" (1 m)	69019	<b>653.00</b>	164.6	9
SK3-20 Sloped channel - 39.37" (1 m) <sup>1</sup>	69020	<b>653.00</b>	166.0	9
SK3-020 Constant depth channel - 39.37" (1 m) <sup>1</sup>	69044	<b>653.00</b>	166.0	9
SK3-0203 Constant depth channel - 19.69" (0.5 m) <sup>1</sup>	69047	<b>406.00</b>	92.0	18
SK3-21 Sloped channel - 39.37" (1 m)	69021	<b>653.00</b>	167.3	9
SK3-22 Sloped channel - 39.37" (1 m)	69022	<b>653.00</b>	168.7	9
SK3-23 Sloped channel - 39.37" (1 m)	69023	<b>653.00</b>	170.1	9
SK3-24 Sloped channel - 39.37" (1 m)	69024	<b>653.00</b>	171.4	9
SK3-25 Sloped channel - 39.37" (1 m) <sup>1</sup>	69025	<b>653.00</b>	172.7	9
SK3-26 Sloped channel - 39.37" (1 m)	69026	<b>653.00</b>	174.2	9
SK3-27 Sloped channel - 39.37" (1 m)	69027	<b>653.00</b>	175.5	9
SK3-28 Sloped channel - 39.37" (1 m)	69028	<b>653.00</b>	176.8	9
SK3-29 Sloped channel - 39.37" (1 m)	69029	<b>653.00</b>	178.3	9
SK3-30 Sloped channel - 39.37" (1 m) <sup>1</sup>	69030	<b>653.00</b>	179.6	9
SK3-030 Constant depth channel - 39.37" (1 m) <sup>1</sup>	69046	<b>653.00</b>	179.6	9
SK3-0303 Constant depth channel - 19.69" (0.5 m) <sup>1</sup>	69049	<b>406.00</b>	100.0	18
SK3-31 Sloped channel - 39.37" (1 m)	69031	<b>653.00</b>	180.9	9
SK3-32 Sloped channel - 39.37" (1 m)	69032	<b>653.00</b>	182.4	9
SK3-33 Sloped channel - 39.37" (1 m)	69033	<b>653.00</b>	183.7	9
SK3-34 Sloped channel - 39.37" (1 m)	69034	<b>653.00</b>	185.0	9
SK3-35 Sloped channel - 39.37" (1 m) <sup>1</sup>	69035	<b>653.00</b>	186.5	9
SK3-36 Sloped channel - 39.37" (1 m)	69036	<b>653.00</b>	187.7	9
SK3-37 Sloped channel - 39.37" (1 m)	69037	<b>653.00</b>	189.1	9
SK3-38 Sloped channel - 39.37" (1 m)	69038	<b>653.00</b>	190.5	9
SK3-39 Sloped channel - 39.37" (1 m)	69039	<b>653.00</b>	191.9	9
SK3-40 Sloped channel - 39.37" (1 m) <sup>1</sup>	69040	<b>653.00</b>	193.2	9
SK3-040 Constant depth channel - 39.37" (1 m) <sup>1</sup>	69048	<b>653.00</b>	193.2	9
SK3-0403 Constant depth channel - 19.69" (0.5 m) <sup>1</sup>	69050	<b>406.00</b>	109.0	18
SK3-903D In-line catch basin - 19.69" (0.5 m) <sup>2,4</sup>	69053	<b>823.00</b>	99.4	6
SK3-907D In-line catch basin - 19.69" (0.5 m) <sup>4,5</sup>	97924	<b>1,045.00</b>	158.4	6
SK3-904D In-line catch basin - 19.69" (0.5 m) <sup>3,4</sup>	69054	<b>933.00</b>	104.4	6
SK3-908D In-line catch basin - 19.69" (0.5 m) <sup>4,6</sup>	97933	<b>1,238.00</b>	203.4	6
Series 611 catch basin riser polymer (optional)	91110	<b>239.00</b>	45.00	24
Series 600 catch basin riser plastic (optional)	99902	<b>208.00</b>	10.0	24
Foul air trap - fits Type 900 & 600 basins	90854	<b>87.00</b>	1.2	-
SK3 Universal inlet/outlet/end cap	96827	<b>112.00</b>	2.5	-
Installation device - 12" system	97479	<b>39.00</b>	4.9	-
Grate removal tool	01318	<b>36.00</b>	0.3	-
SK3 Ductile iron longitudinal grate - 19.69" (0.5 m) (Load Class E)	96833	<b>386.00</b>	62.5	36
SK3 Ductile iron slotted grate - 19.69" (0.5 m) (Load Class F)	02445	<b>276.00</b>	55.0	48
SK3 Ductile iron 4-bolt grate - 19.69" (0.5 m) (Load Class F)	99592	<b>400.00</b>	55.3	36
Replacement bolt for 4-bolt grate	95526	<b>4.20</b>	0.1	-
Tamper-resistant bolt for 4-bolt grate	138127	<b>16.00</b>	0.1	-
Tamper-resistant bolt driver	138128	<b>150.00</b>	0.1	-
PowerLok® safety clip	10443	<b>4.20</b>	0.1	-
PowerDrain® concrete anchors (2 per bag)	97496	<b>35.00</b>	0.3	-

\*includes 4 qty M10 bolts

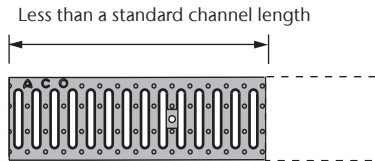
**S300K channel with ductile iron edge rail and specified grating**

\$/ft

LOAD CLASS E - EN 1433 - 134,885 LBS - 2,321 PSI	
SK3 PowerLok ductile iron longitudinal grate	434.45
LOAD CLASS F - EN 1433 - 202,328 LBS - 3,481 PSI	
SK3 PowerLok ductile iron slotted grate	367.38
SK3 4-bolt ductile iron slotted grate	442.99

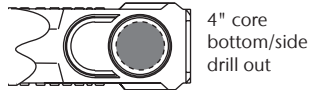
**POLYMER CONCRETE**

**Shortened Channel**



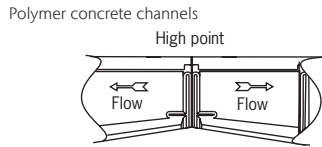
Description	Part No.	Price \$
CUT & MALE/FEMALE DETAILS REMODELED		
K100/KS100/K50/H100K	06627	<b>68.50</b>
K200/KS200	06809	<b>117.00</b>
K300/KS300	06810	<b>163.00</b>
S100K	92782	<b>120.00</b>
S200K	06811	<b>169.00</b>
S300K	98335	<b>215.00</b>
SlabDrain 200SK/200K	06812	<b>179.00</b>
SlabDrain 300SK/300K	06813	<b>222.00</b>
Spill Curbs - Straight or angled cut	06505	<b>196.50</b>

**Bottom/Side Outlet**



CORE DRILL - POLYMER CONCRETE ONLY		
Standard 4" and 6" Sch. 40 pipes	92677	<b>56.00</b>
Non-standard pipe sizes - up to 10"	92688	<b>163.00</b>

**Direction Change**

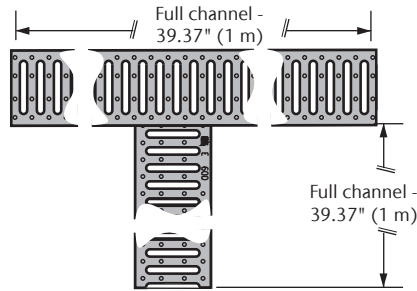


MALE/FEMALE DETAILS REMODELED - POLYMER CONCRETE		
K100/KS100/K50/H100K	06628	<b>68.50</b>
S100K	92836	<b>80.00</b>
S200K/S300K	98356	<b>96.00</b>

Note: parts are only shipped un-assembled.

## POLYMER CONCRETE

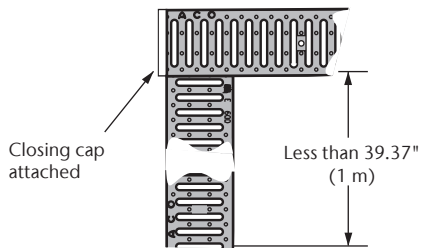
### Full Length Tee



Description	Part No.	Price \$
CUT & MALE/FEMALE DETAILS REMODELED		
K100/KS100/NW100	06631	<b>332.00</b>
K200/KS200	06846	<b>351.00</b>
K300/KS300	06847	<b>387.00</b>
S100K	92714	<b>387.00</b>
S200K	06833	<b>413.00</b>
S300K	98318	<b>437.00</b>

Note: parts are shipped un-assembled but have male/female to aid alignment on site.

### Shortened Tee



Description	Part No.	Price \$
CUT & BONDED OR MALE/FEMALE DETAILS ADDED		
K100/KS100/NW100	06632	<b>344.00</b>
K200/KS200/S200K/S100K	06838	<b>370.00</b>
K300/KS300/S300K	06839	<b>400.00</b>
S100K/H100K	92776	<b>400.00</b>

Note: parts are only shipped assembled where one channel is less than 19.69" (500 mm). Un-assembled channels have male/female to aid alignment on site.

### PowerDrain S300K Spare Parts

	Part No.	Price \$
<b>SK3 903D CATCH BASIN</b>	69053	<b>823.00</b>
SK3 600 Catch basin blank kit blk	138209	<b>70.00</b>
SK3 900D Top	69052	<b>416.00</b>
Series 600 Plastic trash bucket short	98653	<b>132.00</b>
Type 600 Plastic catch basin base	99903	<b>208.00</b>
<b>SK3 907D CATCH BASIN</b>	97924	<b>1,045.00</b>
SK3 600 Catch basin blank kit blk	138209	<b>70.00</b>
SK3 900D Top	69052	<b>416.00</b>
Series 600 Plastic trash bucket short	98653	<b>132.00</b>
Type 612 Polymer concrete catch basin base	01614	<b>258.00</b>
<b>SK3 904D CATCH BASIN</b>	69054	<b>933.00</b>
SK3 600 Catch basin blank kit blk	138209	<b>70.00</b>
SK3 900D Top	69052	<b>416.00</b>
Series 600 Plastic trash bucket deep	98665	<b>166.00</b>
Series 600 Optional riser	99902	<b>208.00</b>
Type 600 Plastic catch basin base	99903	<b>208.00</b>

### PowerDrain S300K Spare Parts

	Part No.	Price \$
<b>SK3 908D CATCH BASIN</b>	97933	<b>1,238.00</b>
SK3 600 Catch basin blank kit blk	138209	<b>70.00</b>
SK3 900D Top	69052	<b>416.00</b>
Series 600 Plastic trash bucket deep	98665	<b>166.00</b>
Series 611 Optional polymer riser	91110	<b>239.00</b>
Type 612 Polymer concrete catch basin base	01614	<b>258.00</b>
<b>SK3 DUCTILE IRON 4 BOLT GRATE &amp; M10 BOLTS</b>	99592	<b>400.00</b>
S300K Stainless High-capacity M10 x 30	95526	<b>4.20</b>
S300K Slotted 4-bolt grate	99587	<b>389.00</b>