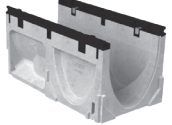


PowerDrain® S200K Parts Table

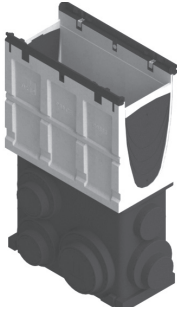
S200K Channel -
39.37" (1 m)



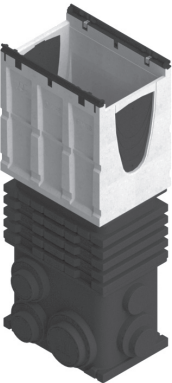
S200K Channel -
19.69" (0.5 m)



SK2-902D In-line Catch Basin



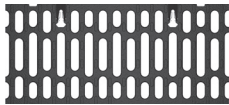
SK2-631D Style Catch Basin



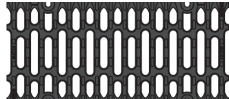
SK2 Ductile Iron
Longitudinal Grate



SK2 Ductile Iron Slotted Grate



SK2 Ductile Iron 4-bolt Grate*



Part No.	Price \$	Weight lbs	Pallet Qty	
SK2-00 Constant depth channel - 39.37" (1 m) ¹	68041	438.00	85.2	16
SK2-1 Sloped channel - 39.37" (1 m)	68001	438.00	85.2	16
SK2-2 Sloped channel - 39.37" (1 m)	68002	438.00	86.3	16
SK2-3 Sloped channel - 39.37" (1 m)	68003	438.00	87.4	16
SK2-4 Sloped channel - 39.37" (1 m)	68004	438.00	88.5	16
SK2-5 Sloped channel - 39.37" (1 m) ¹	68005	438.00	89.6	16
SK2-6 Sloped channel - 39.37" (1 m)	68006	438.00	90.7	16
SK2-7 Sloped channel - 39.37" (1 m)	68007	438.00	91.8	16
SK2-8 Sloped channel - 39.37" (1 m)	68008	438.00	92.9	16
SK2-9 Sloped channel - 39.37" (1 m)	68009	438.00	94.0	16
SK2-10 Sloped channel - 39.37" (1 m) ¹	68010	438.00	95.1	16
SK2-010 Constant depth channel - 39.37" (1 m) ¹	68043	438.00	95.2	16
SK2-0103 Constant depth channel - 19.69" (0.5 m) ¹	68044	355.00	61.2	24
SK2-11 Sloped channel - 39.37" (1 m)	68011	438.00	96.2	12
SK2-12 Sloped channel - 39.37" (1 m)	68012	438.00	97.3	12
SK2-13 Sloped channel - 39.37" (1 m)	68013	438.00	98.4	12
SK2-14 Sloped channel - 39.37" (1 m)	68014	438.00	99.6	12
SK2-15 Sloped channel - 39.37" (1 m) ¹	68015	438.00	100.7	12
SK2-16 Sloped channel - 39.37" (1 m)	68016	438.00	101.8	12
SK2-17 Sloped channel - 39.37" (1 m)	68017	438.00	102.9	12
SK2-18 Sloped channel - 39.37" (1 m)	68018	438.00	104.0	12
SK2-19 Sloped channel - 39.37" (1 m)	68019	438.00	105.1	12
SK2-20 Sloped channel - 39.37" (1 m) ¹	68020	438.00	106.2	12
SK2-020 Constant depth channel - 39.37" (1 m) ¹	68045	438.00	106.2	12
SK2-0203 Constant depth channel - 19.69" (0.5 m) ¹	68046	355.00	68.8	24
SK2-21 Sloped channel - 39.37" (1 m)	68021	438.00	107.3	12
SK2-22 Sloped channel - 39.37" (1 m)	68022	438.00	108.4	12
SK2-23 Sloped channel - 39.37" (1 m)	68023	438.00	109.5	12
SK2-24 Sloped channel - 39.37" (1 m)	68024	438.00	110.6	12
SK2-25 Sloped channel - 39.37" (1 m) ¹	68025	438.00	111.7	12
SK2-26 Sloped channel - 39.37" (1 m)	68026	438.00	112.3	12
SK2-27 Sloped channel - 39.37" (1 m)	68027	438.00	113.9	12
SK2-28 Sloped channel - 39.37" (1 m)	68028	438.00	115.8	12
SK2-29 Sloped channel - 39.37" (1 m)	68029	438.00	116.1	12
SK2-30 Sloped channel - 39.37" (1 m) ¹	68030	438.00	117.2	12
SK2-030 Constant depth channel - 39.37" (1 m) ¹	68047	438.00	117.2	12
SK2-0303 Constant depth channel - 19.69" (0.5 m) ¹	68048	355.00	73.3	24
SK2-31 Sloped channel - 39.37" (1 m)	68031	438.00	118.4	12
SK2-32 Sloped channel - 39.37" (1 m)	68032	438.00	119.5	12
SK2-33 Sloped channel - 39.37" (1 m)	68033	438.00	120.6	12
SK2-34 Sloped channel - 39.37" (1 m)	68034	438.00	121.7	12
SK2-35 Sloped channel - 39.37" (1 m) ¹	68035	438.00	122.8	12
SK2-36 Sloped channel - 39.37" (1 m)	68036	438.00	123.9	12
SK2-37 Sloped channel - 39.37" (1 m)	68037	438.00	125.0	12
SK2-38 Sloped channel - 39.37" (1 m)	68038	438.00	126.1	12
SK2-39 Sloped channel - 39.37" (1 m)	68039	438.00	127.2	12
SK2-40 Sloped channel - 39.37" (1 m) ¹	68040	438.00	128.3	12
SK2-040 Constant depth channel - 39.37" (1 m) ¹	68049	438.00	128.3	12
SK2-0403 Constant depth channel - 19.69" (0.5 m) ¹	68050	355.00	82.1	24
SK2-902D In-line catch basin - 19.69" (0.5 m) ^{2,4}	68053	602.00	81.8	6
SK2-906D In-line catch basin - 19.69" (0.5 m) ^{4,5}	97940	685.00	132.3	6
SK2-621D catch basin - 19.69" (0.5 m) ^{2,4}	68055	796.00	116.0	6
SK2-622D catch basin - 19.69" (0.5 m) ^{4,5}	97923	1,045.00	169.0	6
SK2-631D catch basin - 19.69" (0.5 m) ^{3,4}	68056	933.00	126.0	6
SK2-632D catch basin - 19.69" (0.5 m) ^{4,6}	97932	979.00	214.5	6
Series 611 catch basin riser polymer (optional)	91110	239.00	45.0	24
Series 600 catch basin riser plastic (optional)	99902	208.00	10.0	24
Foul air trap - fits Type 900 & 600 basins	90854	87.00	1.2	-
SK2 Universal inlet/outlet/end cap	96823	69.00	1.4	-
Debris strainer for 4" bottom knockout	93488	63.00	0.2	-
Installation device - 8" system	97478	37.00	4.0	-
Grate removal tool	01318	36.00	0.3	-
SK2 Ductile iron longitudinal grate - 19.69" (0.5 m) (Load Class E)	72263	211.00	26.2	64
SK2 Ductile iron slotted grate - 19.69" (0.5 m) (Load Class F)	02449	183.00	32.0	80
SK2 Ductile iron 4-bolt grate - 19.69" (0.5 m) (Load Class F)	99591	221.00	26.5	80
Replacement bolt for 4-bolt grate	95526	4.20	0.1	-
Tamper-resistant bolt for 4-bolt grate	138127	16.00	0.1	-
Tamper-resistant bolt driver	138128	150.00	0.1	-
PowerLok® safety clip	10443	4.20	0.1	-
PowerDrain® concrete anchors (2 per bag)	97496	35.00	0.3	-

*includes 4 qty M10 bolts

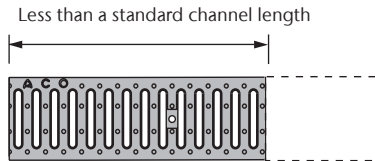
S200K channel with ductile iron edge rail and specified grating

\$/ft

LOAD CLASS E - EN 1433 - 134,885 LBS - 2,321 PSI	
SK2 PowerLok ductile iron longitudinal grate	262.20
LOAD CLASS F - EN 1433 - 202,328 LBS - 3,481 PSI	
SK2 PowerLok ductile iron slotted grate	245.12
SK2 4-bolt ductile iron slotted grate	268.29

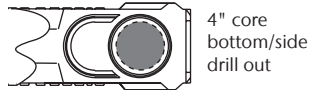
POLYMER CONCRETE

Shortened Channel



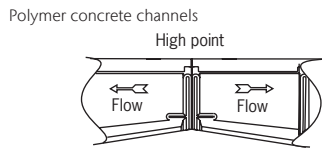
Description	Part No.	Price \$
CUT & MALE/FEMALE DETAILS REMODELED		
K100/KS100/K50/H100K	06627	68.50
K200/KS200	06809	117.00
K300/KS300	06810	163.00
S100K	92782	120.00
S200K	06811	169.00
S300K	98335	215.00
SlabDrain 200SK/200K	06812	179.00
SlabDrain 300SK/300K	06813	222.00
Spill Curbs - Straight or angled cut	06505	196.50

Bottom/Side Outlet



CORE DRILL - POLYMER CONCRETE ONLY		
Standard 4" and 6" Sch. 40 pipes	92677	56.00
Non-standard pipe sizes - up to 10"	92688	163.00

Direction Change

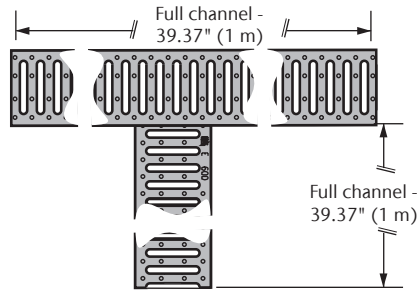


MALE/FEMALE DETAILS REMODELED - POLYMER CONCRETE		
K100/KS100/K50/H100K	06628	68.50
S100K	92836	80.00
S200K/S300K	98356	96.00

Note: parts are only shipped un-assembled.

POLYMER CONCRETE

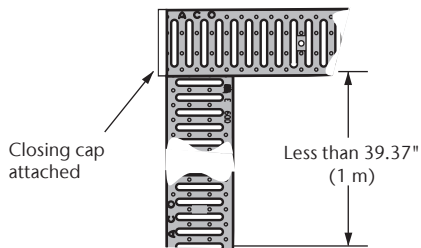
Full Length Tee



Description	Part No.	Price \$
CUT & MALE/FEMALE DETAILS REMODELED		
K100/KS100/NW100	06631	332.00
K200/KS200	06846	351.00
K300/KS300	06847	387.00
S100K	92714	387.00
S200K	06833	413.00
S300K	98318	437.00

Note: parts are shipped un-assembled but have male/female to aid alignment on site.

Shortened Tee



Description	Part No.	Price \$
CUT & BONDED OR MALE/FEMALE DETAILS ADDED		
K100/KS100/NW100	06632	344.00
K200/KS200/S200K/S100K	06838	370.00
K300/KS300/S300K	06839	400.00
S100K/H100K	92776	400.00

Note: parts are only shipped assembled where one channel is less than 19.69" (500 mm). Un-assembled channels have male/female to aid alignment on site.

PowerDrain S200K Spare Parts

	Part No.	Price \$
SK2 902D CATCH BASIN	68053	602.00
SK2 900 Catch basin blank kit blk	138205	72.00
K2 Type 900 Trash bucket	13999	51.00
SK2 900D Top	68052	291.00
Type 900 Plastic catch basin base	99906	193.00
SK2 906D CATCH BASIN	97940	685.00
SK2 900 Catch basin blank kit blk	138205	72.00
K2 Type 900 Trash bucket	13999	51.00
SK2 900D Top	68052	291.00
Type 905 Polymer concrete catch basin base	00402	181.00
SK2 621D CATCH BASIN	68055	796.00
SK2 600 Catch basin blank kit blk	138212	70.00
SK2 600D Top	68054	401.00
Series 600 Plastic trash bucket short	98653	132.00
Type 600 Plastic catch basin base	99903	208.00
SK2 622D CATCH BASIN	97923	1,045.00
SK2 600 Catch basin blank kit blk	138212	70.00
SK2 600D Top	68054	401.00
Series 600 Plastic trash bucket short	98653	132.00
Type 612 Polymer concrete catch basin base	01614	258.00

PowerDrain S200K Spare Parts

	Part No.	Price \$
SK2 631D CATCH BASIN	68056	933.00
SK2 600 Catch basin blank kit blk	138212	70.00
SK2 600D Top	68054	401.00
Series 600 Plastic trash bucket deep	98665	166.00
Series 600 Optional riser	99902	208.00
Type 600 Plastic catch basin base	99903	208.00
SK2 632D CATCH BASIN	97932	979.00
SK2 600 Catch basin blank kit blk	138212	70.00
SK2 600D Top	68054	401.00
Series 600 Plastic trash bucket deep	98665	166.00
Series 611 Optional polymer riser	91110	239.00
Type 612 Polymer concrete catch basin base	01614	258.00
SK2 DUCTILE IRON 4 BOLT GRATE & M10 BOLTS	99591	221.00
S200K Stainless high-capacity M10 x 30	95526	4.20
S200K Slotted 4-bolt grate	99586	208.00