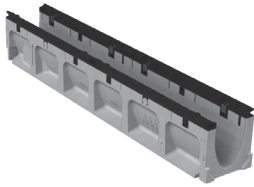
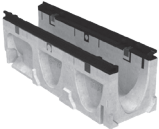


PowerDrain® S100K Parts Table

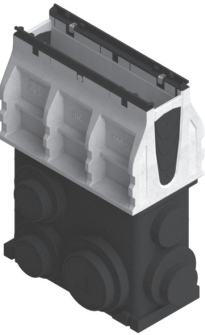
S100K Channel -
39.37" (1 m)



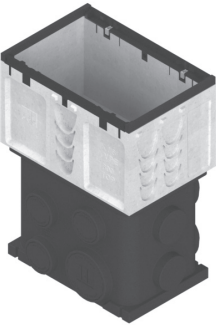
S100K Channel -
19.69" (0.5 m)



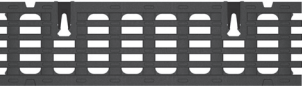
SK1-901D In-line Catch Basin



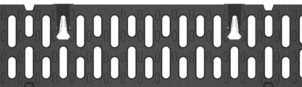
SK1-621D Style Catch Basin



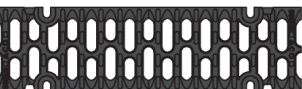
SK1 Ductile Iron
Longitudinal Grate



SK1 Ductile Iron Slotted Grate



SK1 Ductile Iron 4-bolt Grate*



*includes 4 qty M10 bolts

Part No.	Price \$	Weight lbs	Pallet Qty
SK1-00 Constant depth channel - 39.37" (1 m) ¹	67041	285.00	48.1 28
SK1-1 Sloped channel - 39.37" (1 m)	67001	285.00	48.1 28
SK1-2 Sloped channel - 39.37" (1 m)	67002	285.00	49.1 28
SK1-3 Sloped channel - 39.37" (1 m)	67003	285.00	50.1 28
SK1-4 Sloped channel - 39.37" (1 m)	67004	285.00	51.1 28
SK1-5 Sloped channel - 39.37" (1 m) ¹	67005	285.00	52.1 28
SK1-6 Sloped channel - 39.37" (1 m)	67006	285.00	53.1 28
SK1-7 Sloped channel - 39.37" (1 m)	67007	285.00	54.1 28
SK1-8 Sloped channel - 39.37" (1 m)	67008	285.00	55.1 28
SK1-9 Sloped channel - 39.37" (1 m)	67009	285.00	56.1 28
SK1-10 Sloped channel - 39.37" (1 m) ¹	67010	285.00	57.1 28
SK1-010 Constant depth channel - 39.37" (1 m) ¹	67043	285.00	57.1 28
SK1-0103 Constant depth channel - 19.69" (0.5 m) ¹	67044	195.00	29.4 56
SK1-11 Sloped channel - 39.37" (1 m)	67011	285.00	58.1 28
SK1-12 Sloped channel - 39.37" (1 m)	67012	285.00	59.1 28
SK1-13 Sloped channel - 39.37" (1 m)	67013	285.00	60.1 28
SK1-14 Sloped channel - 39.37" (1 m)	67014	285.00	61.1 28
SK1-15 Sloped channel - 39.37" (1 m) ¹	67015	285.00	62.1 28
SK1-16 Sloped channel - 39.37" (1 m)	67016	285.00	63.1 28
SK1-17 Sloped channel - 39.37" (1 m)	67017	285.00	64.1 28
SK1-18 Sloped channel - 39.37" (1 m)	67018	285.00	65.1 28
SK1-19 Sloped channel - 39.37" (1 m)	67019	285.00	66.1 28
SK1-20 Sloped channel - 39.37" (1 m) ¹	67020	285.00	67.1 28
SK1-020 Constant depth channel - 39.37" (1 m) ¹	67045	285.00	67.1 28
SK1-0203 Constant depth channel - 19.69" (0.5 m) ¹	67046	195.00	33.9 56
SK1-21 Sloped channel - 39.37" (1 m)	67021	285.00	68.1 21
SK1-22 Sloped channel - 39.37" (1 m)	67022	285.00	69.1 21
SK1-23 Sloped channel - 39.37" (1 m)	67023	285.00	70.1 21
SK1-24 Sloped channel - 39.37" (1 m)	67024	285.00	71.0 21
SK1-25 Sloped channel - 39.37" (1 m) ¹	67025	285.00	72.0 21
SK1-26 Sloped channel - 39.37" (1 m)	67026	285.00	73.0 21
SK1-27 Sloped channel - 39.37" (1 m)	67027	285.00	74.0 21
SK1-28 Sloped channel - 39.37" (1 m)	67028	285.00	75.0 21
SK1-29 Sloped channel - 39.37" (1 m)	67029	285.00	76.0 21
SK1-30 Sloped channel - 39.37" (1 m) ¹	67030	285.00	77.0 21
SK1-030 Constant depth channel - 39.37" (1 m) ¹	67047	285.00	77.0 21
SK1-0303 Constant depth channel - 19.69" (0.5 m) ¹	67048	195.00	38.4 42
SK1-31 Sloped channel - 39.37" (1 m)	67031	285.00	78.0 21
SK1-32 Sloped channel - 39.37" (1 m)	67032	285.00	79.0 21
SK1-33 Sloped channel - 39.37" (1 m)	67033	285.00	80.0 21
SK1-34 Sloped channel - 39.37" (1 m)	67034	285.00	81.0 21
SK1-35 Sloped channel - 39.37" (1 m) ¹	67035	285.00	82.0 21
SK1-36 Sloped channel - 39.37" (1 m)	67036	285.00	83.0 21
SK1-37 Sloped channel - 39.37" (1 m)	67037	285.00	84.0 21
SK1-38 Sloped channel - 39.37" (1 m)	67038	285.00	85.0 21
SK1-39 Sloped channel - 39.37" (1 m)	67039	285.00	86.0 21
SK1-40 Sloped channel - 39.37" (1 m) ¹	67040	285.00	87.0 21
SK1-040 Constant depth channel - 39.37" (1 m) ¹	67049	285.00	87.0 21
SK1-0403 Constant depth channel - 19.69" (0.5 m) ¹	67050	195.00	43.0 42
SK1-901D In-line catch basin - 19.69" (0.5 m) ^{2,4}	67051	580.00	86.0 6
SK1-906D In-line catch basin - 19.69" (0.5 m) ^{4,5}	97939	607.00	131.3 6
SK1-621D catch basin - 19.69" (0.5 m) ^{2,4}	67053	794.00	75.7 6
SK1-622D catch basin - 19.69" (0.5 m) ^{4,5}	97921	679.00	185.5 6
SK1-631D catch basin - 19.69" (0.5 m) ^{3,4}	67054	912.00	85.7 6
SK1-632D catch basin - 19.69" (0.5 m) ^{4,6}	97931	896.00	231.0 6
Series 611 catch basin riser polymer (optional)	91110	239.00	45.0 24
Series 600 catch basin riser plastic (optional)	99902	208.00	10.0 24
Foul air trap - fits Type 900 & 600 basins	90854	87.00	1.2 -
SK1-304-6 6" Inlet cap	96861	86.00	6.2 -
SK1-308-6 6" Outlet end cap	96862	86.00	6.0 -
SK1-404-6 6" Inlet end cap	96863	86.00	7.2 -
SK1-408-6 6" Outlet end cap	96864	86.00	7.0 -
SK1 Universal inlet/outlet/end cap	96824	21.00	0.4 -
Debris strainer for 4" bottom knockout	93488	63.00	0.2 -
Outlet adapter - 4" oval to 6" round	95140	26.00	1.1 -
Installation device - 4" system	97477	36.00	2.8 -
Grate removal tool	01318	36.00	0.3 -
SK1 Ductile iron longitudinal grate - 19.69" (0.5 m) (Load Class F)	96096	106.00	13.9 200
SK1 Ductile iron slotted grate - 19.69" (0.5 m) (Load Class F)	96082	78.00	12.9 200
SK1 Ductile iron 4-bolt iron grate - 19.69" (0.5 m) (Load Class F)	99590	106.00	10.8 140
Replacement bolt for 4-bolt grate	95526	4.20	0.1 -
Tamper-resistant bolt for 4-bolt grate	138127	16.00	0.1 -
Tamper-resistant bolt driver	138128	150.00	0.1 -
PowerLok® safety clip	10443	4.20	0.1 -
PowerDrain® concrete anchors (2 per bag)	97496	35.00	0.3 -

S100K channel with ductile iron edge rail and specified grating

\$/ft

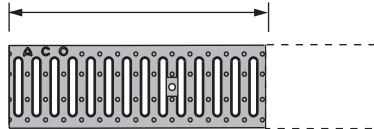
LOAD CLASS F - EN 1433 - 202,328 LBS - 6,962 PSI

SK1 PowerLok ductile iron longitudinal grate	151.52
SK1 PowerLok ductile iron slotted grate	134.45
SK1 4-bolt ductile iron slotted grate	151.52

POLYMER CONCRETE

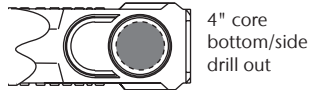
Shortened Channel

Less than a standard channel length



Description	Part No.	Price \$
CUT & MALE/FEMALE DETAILS REMODELED		
K100/KS100/K50/H100K	06627	68.50
K200/KS200	06809	117.00
K300/KS300	06810	163.00
S100K	92782	120.00
S200K	06811	169.00
S300K	98335	215.00
SlabDrain 200SK/200K	06812	179.00
SlabDrain 300SK/300K	06813	222.00
Spill Curbs - Straight or angled cut	06505	196.50

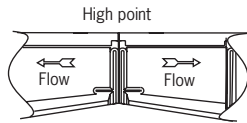
Bottom/Side Outlet



CORE DRILL - POLYMER CONCRETE ONLY		
Standard 4" and 6" Sch. 40 pipes	92677	56.00
Non-standard pipe sizes - up to 10"	92688	163.00

Direction Change

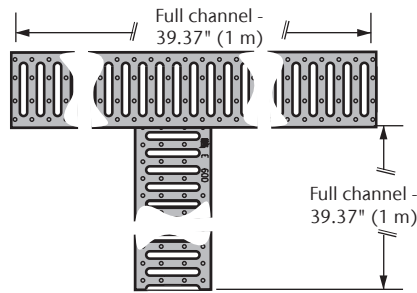
Polymer concrete channels



MALE/FEMALE DETAILS REMODELED - POLYMER CONCRETE		
K100/KS100/K50/H100K	06628	68.50
S100K	92836	80.00
S200K/S300K	98356	96.00
Note: parts are only shipped un-assembled.		
SHORTENED CHANNEL & MALE/FEMALE DETAILS REMODELED		
K100/S100K	06629	135.50
K200/K300/SK200/SK300	06845	160.00

POLYMER CONCRETE

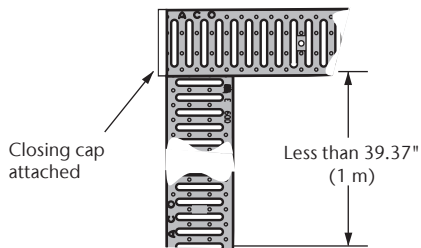
Full Length Tee



Description	Part No.	Price \$
CUT & MALE/FEMALE DETAILS REMODELED		
K100/KS100/NW100	06631	332.00
K200/KS200	06846	351.00
K300/KS300	06847	387.00
S100K	92714	387.00
S200K	06833	413.00
S300K	98318	437.00

Note: parts are shipped un-assembled but have male/female to aid alignment on site.

Shortened Tee



Description	Part No.	Price \$
CUT & BONDED OR MALE/FEMALE DETAILS ADDED		
K100/KS100/NW100	06632	344.00
K200/KS200/S200K/S100K	06838	370.00
K300/KS300/S300K	06839	400.00
S100K/H100K	92776	400.00

Note: parts are only shipped assembled where one channel is less than 19.69" (500 mm). Un-assembled channels have male/female to aid alignment on site.

PowerDrain S100K Spare Parts

	Part No.	Price \$
SK1 901D CATCH BASIN	67051	580.00
Type 900 Trash bucket	01498	78.00
SK1 900 Catch basin blank kit blk	138096	63.00
SK1 900D Top	67052	256.00
Type 900 Plastic catch basin base	99906	193.00
SK1 906D CATCH BASIN	97939	607.00
Type 900 Trash bucket	01498	78.00
SK1 900 Catch basin blank kit blk	138096	63.00
SK1 900D Top	67052	256.00
Type 905 Polymer concrete catch basin base	00402	181.00
SK1 621D CATCH BASIN	67053	794.00
SK1 600D Top	67055	463.00
Series 600 Plastic trash bucket short	98653	132.00
Type 600 Plastic catch basin base	99903	208.00
SK1 622D CATCH BASIN	97921	679.00
SK1 600D Top	67055	463.00
Series 600 Plastic trash bucket short	98653	132.00
Type 612 Polymer concrete catch basin base	01614	258.00

PowerDrain S100K Spare Parts

	Part No.	Price \$
SK1 631D CATCH BASIN	67054	912.00
SK1 600D Top	67055	463.00
Series 600 Plastic trash bucket deep	98665	166.00
Series 600 Optional riser	99902	208.00
Type 600 Plastic catch basin base	99903	208.00
SK1 632D CATCH BASIN	97931	896.00
SK1 600D Top	67055	463.00
Series 600 Plastic trash bucket deep	98665	166.00
Series 611 Optional polymer riser	91110	239.00
Type 612 Polymer concrete catch basin base	01614	258.00
SK1 DUCTILE IRON 4 BOLT GRATE & M10 BOLTS	99590	106.00
S100K Stainless high-capacity M10 x 30	95526	4.20
S100K Slotted 4-bolt grate	99585	97.00