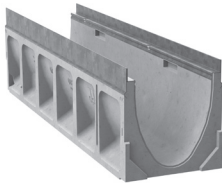
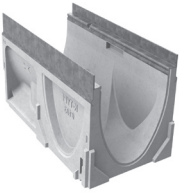


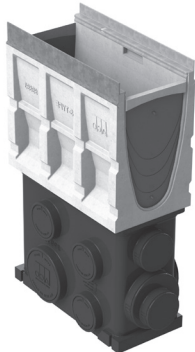
K200 Channel -
39.37" (1 m)



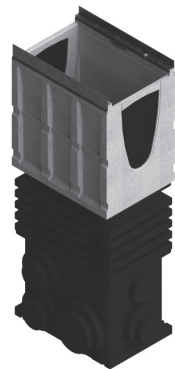
K200 Channel -
19.69" (0.5 m)



K1-902 In-line Catch Basin



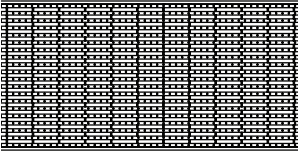
K2-631 Style Catch Basin



**KlassikDrain K200/KS200
Parts Table**

	K200 Galvanized Edge				KS200 Stainless Edge		
	Part No.	Price \$	Weight lbs	Pallet Qty	Part No.	Price \$	Weight lbs
K2-00 Constant depth channel - 39.37" (1 m) ¹	75041	271.00	83.6	16	75441	547.00	83.6
K2-1 Sloped channel - 39.37" (1 m)	75001	271.00	83.6	16	75401	547.00	83.6
K2-2 Sloped channel - 39.37" (1 m)	75002	271.00	84.7	16	75402	547.00	84.7
K2-3 Sloped channel - 39.37" (1 m)	75003	271.00	85.8	16	75403	547.00	85.8
K2-4 Sloped channel - 39.37" (1 m)	75004	271.00	86.9	16	75404	547.00	86.9
K2-5 Sloped channel - 39.37" (1 m) ¹	75005	271.00	88.0	16	75405	547.00	88.0
K2-6 Sloped channel - 39.37" (1 m)	75006	271.00	89.1	16	75406	547.00	89.1
K2-7 Sloped channel - 39.37" (1 m)	75007	271.00	90.2	16	75407	547.00	90.2
K2-8 Sloped channel - 39.37" (1 m)	75008	271.00	91.3	16	75408	547.00	91.3
K2-9 Sloped channel - 39.37" (1 m)	75009	271.00	92.4	16	75409	547.00	92.4
K2-10 Sloped channel - 39.37" (1 m) ¹	75010	271.00	93.5	16	75410	547.00	93.5
K2-010 Constant depth channel - 39.37" (1 m) ¹	75043	271.00	93.5	16	75443	547.00	93.5
K2-0103 Constant depth channel - 19.69" (0.5 m) ¹	75044	181.00	56.0	24	75444	369.00	56.0
K2-11 Sloped channel - 39.37" (1 m)	75011	271.00	94.6	12	75411	547.00	94.6
K2-12 Sloped channel - 39.37" (1 m)	75012	271.00	95.7	12	75412	547.00	95.7
K2-13 Sloped channel - 39.37" (1 m)	75013	271.00	96.8	12	75413	547.00	96.8
K2-14 Sloped channel - 39.37" (1 m)	75014	271.00	97.9	12	75414	547.00	97.9
K2-15 Sloped channel - 39.37" (1 m) ¹	75015	271.00	99.0	12	75415	547.00	99.0
K2-16 Sloped channel - 39.37" (1 m)	75016	271.00	100.1	12	75416	547.00	100.1
K2-17 Sloped channel - 39.37" (1 m)	75017	271.00	101.2	12	75417	547.00	101.2
K2-18 Sloped channel - 39.37" (1 m)	75018	271.00	102.3	12	75418	547.00	102.3
K2-19 Sloped channel - 39.37" (1 m)	75019	271.00	103.4	12	75419	547.00	103.4
K2-20 Sloped channel - 39.37" (1 m) ¹	75020	271.00	104.5	12	75420	547.00	104.5
K2-020 Constant depth channel - 39.37" (1 m) ¹	75045	271.00	104.5	12	75445	547.00	104.5
K2-0203 Constant depth channel - 19.69" (0.5 m) ¹	75046	181.00	64.0	24	75446	369.00	64.0
K2-21 Sloped channel - 39.37" (1 m)	75021	271.00	105.6	12	75421	547.00	105.6
K2-22 Sloped channel - 39.37" (1 m)	75022	271.00	106.7	12	75422	547.00	106.7
K2-23 Sloped channel - 39.37" (1 m)	75023	271.00	107.8	12	75423	547.00	107.8
K2-24 Sloped channel - 39.37" (1 m)	75024	271.00	108.9	12	75424	547.00	108.9
K2-25 Sloped channel - 39.37" (1 m) ¹	75025	271.00	110.0	12	75425	547.00	110.0
K2-26 Sloped channel - 39.37" (1 m)	75026	271.00	111.1	12	75426	547.00	111.1
K2-27 Sloped channel - 39.37" (1 m)	75027	271.00	112.2	12	75427	547.00	112.2
K2-28 Sloped channel - 39.37" (1 m)	75028	271.00	113.3	12	75428	547.00	113.3
K2-29 Sloped channel - 39.37" (1 m)	75029	271.00	114.4	12	75429	547.00	114.4
K2-30 Sloped channel - 39.37" (1 m) ¹	75030	271.00	115.5	12	75430	547.00	115.5
K2-030 Constant depth channel - 39.37" (1 m) ¹	75047	271.00	115.5	12	75447	547.00	115.5
K2-0303 Constant depth channel - 19.69" (0.5 m) ¹	75048	181.00	68.0	24	75448	369.00	68.0
K2-31 Sloped channel - 39.37" (1 m)	75031	271.00	116.6	12	75431	547.00	116.6
K2-32 Sloped channel - 39.37" (1 m)	75032	271.00	117.7	12	75432	547.00	117.7
K2-33 Sloped channel - 39.37" (1 m)	75033	271.00	118.8	12	75433	547.00	118.8
K2-34 Sloped channel - 39.37" (1 m)	75034	271.00	119.9	12	75434	547.00	119.9
K2-35 Sloped channel - 39.37" (1 m) ¹	75035	271.00	121.0	12	75435	547.00	121.0
K2-36 Sloped channel - 39.37" (1 m)	75036	271.00	122.1	12	75436	547.00	122.1
K2-37 Sloped channel - 39.37" (1 m)	75037	271.00	123.2	12	75437	547.00	123.2
K2-38 Sloped channel - 39.37" (1 m)	75038	271.00	124.3	12	75438	547.00	124.3
K2-39 Sloped channel - 39.37" (1 m)	75039	271.00	125.4	12	75439	547.00	125.4
K2-40 Sloped channel - 39.37" (1 m) ¹	75040	271.00	126.5	12	75440	547.00	126.5
K2-040 Constant depth channel - 39.37" (1 m) ¹	75049	271.00	126.5	12	75449	547.00	126.5
K2-0403 Constant depth channel - 19.69" (0.5 m) ¹	75050	181.00	77.0	12	75450	369.00	77.0
K2-902G/902S In-line catch basin - 19.69" (0.5 m) ^{2,4}	94611	660.00	68.0	6	94612	699.00	68.0
K2-906G/906S In-line catch basin - 19.69" (0.5 m) ^{4,5}	97937	625.00	137.1	6	97938	673.00	128.5
K2-621G/621S Catch basin - 19.69" (0.5 m) ^{2,4}	94620	830.00	91.0	6	94621	865.00	91.0
K2-622G/622S Catch basin - 19.69" (0.5 m) ^{4,5}	97917	841.00	169.7	6	97918	878.00	144.5
K2-631G/631S Catch basin - 19.69" (0.5 m) ^{3,4}	94633	990.00	101.0	6	94634	1,005.00	101.0
K2-632G/632S Catch basin - 19.69" (0.5 m) ^{4,6}	97927	1,052.00	215.2	6	97928	1,087.00	190.0
Series 611 catch basin riser polymer (optional)	91110	239.00	45.0	24	91110	239.00	45.0
Series 600 catch basin riser plastic (optional)	99902	208.00	10.0	24	99902	208.00	10.0
Foul air trap - fits Type 900 & 600 basins	90854	87.00	1.2	-	90854	87.00	1.2
K2 Universal inlet/outlet/end cap	96821	69.00	1.4	-	96821	69.00	1.4
Debris strainer for 4" bottom knockout	93488	63.00	0.2	-	93488	63.00	0.2
Installation device - 8" system	97478	37.00	4.0	-	97478	37.00	4.0
Grate removal tool	01318	36.00	0.3	-	01318	36.00	0.3
QuickLok® locking bar - 8" system	10457	28.00	0.5	-	10457	28.00	0.5
QuickLok® locking bar - Series 900 catch basin	98717	28.00	0.1	-	98717	28.00	0.1
QuickLok® locking bar - Series 600 catch basin	94564	70.00	0.1	-	94564	70.00	0.1

DrainLok K200/KS200 Grates

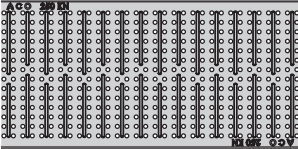
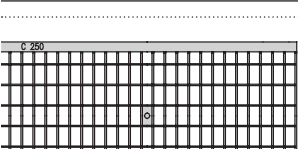

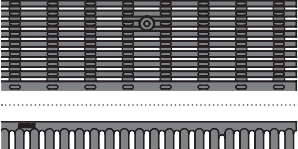
		Length in (mm)	Part No.	Price \$	Weight lbs	Pallet Qty
LOAD CLASS B - EN 1433 - 28,101 LBS - 387 PSI						
	Type 647D Stainless longitudinal	39.37 (1000)	142219	1,630.00	18.0	100
	Type 648D Stainless longitudinal	19.69 (500)	142220	1,095.00	9.0	100

LOAD CLASS C - EN 1433 - 56,202 LBS - 774 PSI

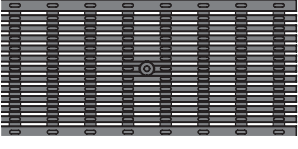
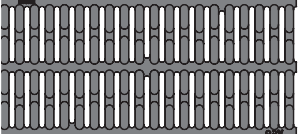
	Type 660D Ductile iron slotted	19.69 (500)	142177	166.00	19.0	80
	Type 676D Ductile iron longitudinal	19.69 (500)	142173	171.00	19.0	80
	Type 680D Ductile iron wave	19.69 (500)	99579	208.00	27.0	80

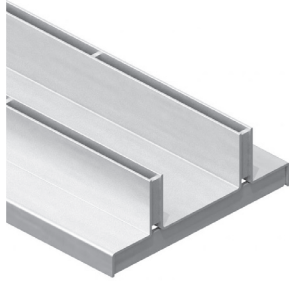
QuickLok® K200/KS200 Grates

LOAD CLASS C - EN 1433 - 56,202 LBS - 774 PSI

	Type 611Q Galvanized perforated	39.37 (1000)	98962	400.00	28.0	80
	Type 613Q Galvanized perforated	19.69 (500)	98961	317.00	14.0	80
	Type 665Q Stainless perforated	39.37 (1000)	98960	1,158.00	28.0	80
	Type 666Q Stainless perforated	19.69 (500)	98959	768.00	14.0	80
	Type 605Q Galvanized mesh	39.37 (1000)	10352	551.00	30.0	100
	Type 606Q Galvanized mesh	19.69 (500)	10353	319.00	15.0	100
	Type 630Q Stainless mesh	39.37 (1000)	16032	1,723.00	28.0	100
	Type 631Q Stainless mesh	19.69 (500)	16033	1,110.00	14.0	100

LOAD CLASS E - EN 1433 - 134,885 LBS - 1,856 PSI

	Type 678Q Ductile iron longitudinal	19.69 (500)	138129	256.00	26.0	80
	Type 661Q Ductile iron slotted	19.69 (500)	10351	248.00	37.0	48

**Twinslot 200 - for K200/KS200**

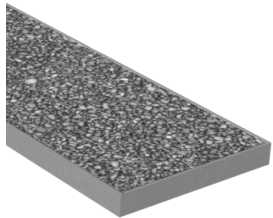
Type 641 Galvanized steel Brickslot - 39.37" (1 m)	138060	368.00	36.3	36
Type 642 Galvanized steel Brickslot - 19.69" (0.5 m)	138061	298.00	18.7	72
Type 682 Galvanized steel Brickslot access unit - 19.69" (0.5 m)	138062	602.00	32.4	25
Type 643 Stainless steel Brickslot - 39.37" (1 m)	138065	783.00	36.3	75
Type 644 Stainless steel Brickslot - 19.69" (0.5 m)	138066	589.00	18.7	100
Type 684 Stainless steel Brickslot access unit - 19.69" (0.5 m)	138067	952.00	32.4	25

**Heel Resistant Brickslot 200 - for K200/KS200**

Type 670 Galvanized steel Brickslot - 39.37" (1 m)	138070	381.00	28.2	24
Type 672 Galvanized steel Brickslot - 19.69" (0.5 m)	138071	298.00	14.5	56
Type 683 Galvanized steel Brickslot access unit - 19.69" (0.5 m)	138072	602.00	29.0	25
Type 673 Stainless steel Brickslot - 39.37" (1 m)	138075	783.00	28.2	75
Type 674 Stainless steel Brickslot - 19.69" (0.5 m)	138076	561.00	14.5	100
Type 685 Stainless steel Brickslot access unit - 19.69" (0.5 m)	138077	946.00	29.0	25

Brickslot Accessories

Grate removal tool for access unit	01318	36.00	0.3	-
------------------------------------	-------	--------------	-----	---



EcoPanel*	Standard Unit			Access Unit		
	Part No.	Price \$	Pallet Qty	Part No.	Price \$	Weight lbs
Black Granite	142742	1,070.00	16	142743	1,070.00	50.7
Blue Marble	142744	1,070.00	16	142745	1,070.00	50.7
Silver Marble	142746	1,070.00	16	142747	1,070.00	50.7
Starlight Granite	142748	1,070.00	16	142749	1,070.00	50.7
Sand Marble	142750	1,070.00	16	142751	1,070.00	50.7
Gold Marble	142752	1,070.00	16	142753	1,070.00	50.7
Gray Marble	142754	1,070.00	16	142755	1,070.00	50.7
Red Granite	142756	1,070.00	16	142757	1,070.00	50.7
Lifting Key	-	-	-	84306	25.00	-

K200 channel with galvanized edge rail and specified DrainLok grating \$/ft

LOAD CLASS C - EN 1433 - 56,202 LBS - 967 PSI	
Type 660D Ductile iron slotted	183.84
Type 676D Ductile iron longitudinal	186.89
Type 680D Ductile iron wave	209.45

K200 channel with galvanized edge rail, locking bars and specified QuickLok® grating \$/ft

LOAD CLASS C - EN 1433 - 56,202 LBS - 967 PSI	
Type 611Q Galvanized perforated	221.65
Type 605Q Galvanized mesh	267.68
LOAD CLASS E - EN 1433 - 134,885 LBS - 2,321 PSI	
Type 678Q Ductile iron longitudinal	255.79
Type 661Q Ductile iron slotted	250.91

KS200 channel with stainless edge rail and specified DrainLok grating \$/ft

LOAD CLASS B - EN 1433 - 28,101 LBS - 483 PSI	
Type 647D Stainless longitudinal	663.72
LOAD CLASS C - EN 1433 - 56,202 LBS - 967 PSI	
Type 660D Ductile iron slotted	267.99
Type 676D Ductile iron longitudinal	271.04
Type 680D Ductile iron wave	293.60

KS200 channel with stainless edge rail, locking bars and specified QuickLok® grating \$/ft

LOAD CLASS C - EN 1433 - 56,202 LBS - 967 PSI	
Type 665Q Stainless steel perforated	536.89
Type 630Q Stainless mesh	709.15
LOAD CLASS E - EN 1433 - 134,885 LBS - 2,321 PSI	
Type 678Q Ductile iron longitudinal	339.94
Type 661Q Ductile iron slotted	335.06

K200 channel with galvanized edge rail and specified Brickslot top \$/ft

LOAD CLASS C - EN 1433 - 56,202 LBS - 967 PSI	
Type 641Twinslot 200	194.82
Type 670 Heel Resistant Brickslot 200	198.78

KS200 channel with stainless edge rail and specified Brickslot top \$/ft

LOAD CLASS C - EN 1433 - 56,202 LBS - 967 PSI	
Type 643 Twinslot 200	405.49
Type 673 Heel Resistant Brickslot 200	405.49

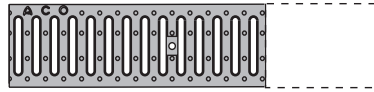
K200 channel with galvanized edge rail and specified EcoPanel top \$/ft

LOAD CLASS B - EN 1433 - 28,101 LBS - 967 PSI	
Black Granite	408.84
Blue Marble	408.84
Silver Marble	408.84
Starlight Granite	408.84
Sand Marble	408.84
Gold Marble	408.84
Gray Marble	408.84
Red Granite	408.84

POLYMER CONCRETE

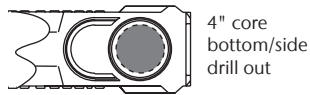
Shortened Channel

Less than a standard channel length



Description	Part No.	Price \$
CUT & MALE/FEMALE DETAILS REMODELED		
K100/KS100/K50/H100K	06627	68.50
K200/KS200	06809	117.00
K300/KS300	06810	163.00
S100K	92782	120.00
S200K	06811	169.00
S300K	98335	215.00
SlabDrain 200SK/200K	06812	179.00
SlabDrain 300SK/300K	06813	222.00
Spill Curbs - Straight or angled cut	06505	196.50

Bottom/Side Outlet

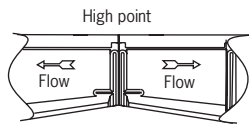


4" core
bottom/side
drill out

CORE DRILL - POLYMER CONCRETE ONLY		
Standard 4" and 6" Sch. 40 pipes	92677	56.00
Non-standard pipe sizes - up to 10"	92688	163.00

Direction Change

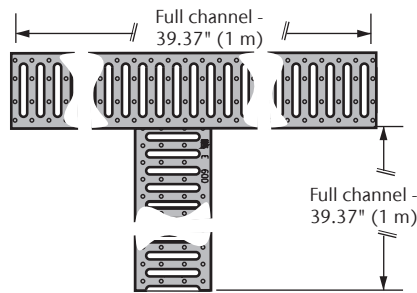
Polymer concrete channels



SHORTENED CHANNEL & MALE/FEMALE DETAILS REMODELED		
K100/S100K	06629	135.00
K200/K300/SK200/SK300	06845	160.00

POLYMER CONCRETE

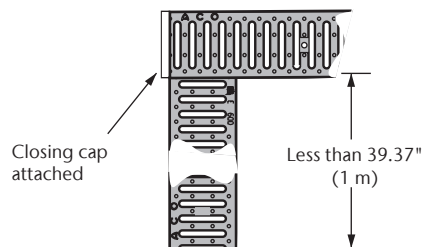
Full Length Tee



Description	Part No.	Price \$
CUT & MALE/FEMALE DETAILS REMODELED		
K100/KS100/NW100	06631	332.00
K200/KS200	06846	351.00
K300/KS300	06847	387.00
S100K	92714	387.00
S200K	06833	413.00
S300K	98318	437.00

Note: parts are shipped un-assembled but have male/female to aid alignment on site.

Shortened Tee



CUT & BONDED OR MALE/FEMALE DETAILS ADDED		
K100/KS100/NW100	06632	344.00
K200/KS200/S200K/S100K	06838	370.00
K300/KS300/S300K	06839	400.00
S100K/H100K	92776	400.00

Note: parts are only shipped assembled where one channel is less than 19.69" (500 mm). Un-assembled channels have male/female to aid alignment on site.

KlassikDrain K200 Spare Parts	Part No.	Price \$
K2 901G CATCH BASIN	94611	660.00
K2 900 Galvanized catch basin blank kit	138206	70.00
K2 Type 900 Trash bucket	13999	51.00
K2 902G Top	99895	353.00
Type 900 Plastic catch basin base	99906	193.00
QuickLok® locking bar (removable)	10457	28.00

K2 901S CATCH BASIN	94612	699.00
KS2 900 Stainless catch basin blank kit	138207	54.00
K2 Type 900 Trash bucket	13999	51.00
K2 902S Top - gen 2	99894	410.00
Type 900 Plastic catch basin base	99906	193.00
QuickLok® locking bar (removable)	10457	28.00

K2 902G CATCH BASIN	97937	625.00
K2 900 Galvanized catch basin blank kit	138206	70.00
K2 Type 900 Trash bucket	13999	51.00
K2 902G Top	99895	353.00
Type 905 Polymer concrete catch basin base	00402	181.00
QuickLok® locking bar (removable)	10457	28.00

K2 902S CATCH BASIN	97938	673.00
KS2 900 Stainless catch basin blank kit	138207	54.00
K2 Type 900 Trash bucket	13999	51.00
K2 902S Top - gen 2	99894	410.00
Type 905 Polymer concrete catch basin base	00402	181.00
QuickLok® locking bar (removable)	10457	28.00

K2 621G CATCH BASIN	94620	830.00
K2 600 Galvanized catch basin blank kit	138213	70.00
K2-621G Top	94627	428.00
Series 600 Plastic trash bucket short	98653	132.00
Type 600 Plastic catch basin base	99903	208.00
QuickLok® locking bar (removable)	10458	37.00

K2 621S CATCH BASIN	94621	865.00
KS2 600 Stainless catch basin blank kit	138214	70.00
K2-621S Top	94628	469.00
Series 600 Plastic trash bucket short	98653	132.00
Type 600 Plastic catch basin base	99903	208.00
QuickLok® locking bar (removable)	10458	37.00

K2 622G CATCH BASIN	97917	841.00
K2 600 Galvanized catch basin blank kit	138213	70.00
K2-621G Top	94627	428.00
Series 600 Plastic trash bucket short	98653	132.00
Type 612 Polymer concrete catch basin base	01614	258.00
QuickLok® locking bar (removable)	10458	37.00

KlassikDrain K200 Spare Parts	Part No.	Price \$
K2 622S CATCH BASIN	97918	878.00
KS2 600 Stainless catch basin blank kit	138214	70.00
K2-621S Top	94628	469.00
Series 600 Plastic trash bucket short	98653	132.00
Type 612 Polymer concrete catch basin base	01614	258.00
QuickLok® locking bar (removable)	10458	37.00

K2 631G CATCH BASIN	94633	990.00
K2 600 Galvanized catch basin blank kit	138213	70.00
K2-621G Top	94627	428.00
Series 600 Plastic trash bucket deep	98665	166.00
Series 600 Optional riser	99902	208.00
Type 600 Plastic catch basin base	99903	208.00
QuickLok® locking bar (removable)	10458	37.00

K2 631S CATCH BASIN	94634	1,005.00
KS2 600 Stainless catch basin blank kit	138214	70.00
K2-621S Top	94628	469.00
Series 600 Plastic trash bucket deep	98665	166.00
Series 600 Optional riser	99902	208.00
Type 600 Plastic catch basin base	99903	208.00
QuickLok® locking bar (removable)	10458	37.00

K2 632G CATCH BASIN	97927	1,052.00
K2 600 Galvanized catch basin blank kit	138213	70.00
K2-621G Top	94627	428.00
Series 600 Plastic trash bucket deep	98665	166.00
Series 611 Optional polymer riser	91110	239.00
Type 612 Polymer concrete catch basin base	01614	258.00
QuickLok® locking bar (removable)	10458	37.00

K2 632S CATCH BASIN	97928	1,087.00
KS2 600 Stainless catch basin blank kit	138214	70.00
K2-621S Top	94628	469.00
Series 600 Plastic trash bucket deep	98665	166.00
Series 611 Optional polymer riser	91110	239.00
Type 612 Polymer concrete catch basin base	01614	258.00
QuickLok® locking bar (removable)	10458	37.00

BrickSlot Spare PartsPart
No. **Price**
 \$

TWINSLOT 200		
Type 682 Brickslot galvanized access unit kit	138062	602.00
Type 682/683 Brickslot galvanized access frame	138063	215.00
Type 682 Brickslot galvanized access insert	138064	395.00
Type 684 Brickslot stainless access unit kit	138067	952.00
Type 684/685 Brickslot stainless access frame	138068	291.00
Type 684 Brickslot stainless access insert	138069	671.00

HEEL-RESISTANT BRICKSLOT 200		
Type 683 Brickslot galvanized access unit kit	138072	602.00
Type 682/683 Brickslot galvanized access frame	138063	215.00
Type 683 Brickslot galvanized access insert	138074	392.00
Type 685 Brickslot stainless access unit kit	138077	946.00
Type 684/685 Brickslot stainless access frame	138068	291.00
Type 685 Brickslot stainless access insert	138079	665.00