

SlabDrain Parts Table

H100K-6



	Part No.	Price \$	Weight lbs	Pallet Qty	Part No.	Price \$	Weight lbs
Constant depth channel - 39.37" (1 m)	141803	146.00	7.6	56	141804	278.00	7.6
Closing end cap	141805	22.00	0.1	-	296097	26.00	0.1
Debris strainer for 4" bottom knockout	93488	63.00	0.1	-	93488	63.00	0.1
Grate removal tool	01318	36.00	0.1	-	01318	36.00	0.1

H100K-6 - Galvanized

H100KS-6 - Stainless

H100K-8

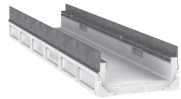


	Part No.	Price \$	Weight lbs	Pallet Qty	Part No.	Price \$	Weight lbs
Constant depth channel - 39.37" (1 m) ¹	95365	155.00	16.0	56	95373	298.00	16.0
Closing end cap	98462	23.00	1.0	-	98471	28.00	1.0
Debris strainer for 4" bottom knockout	93488	63.00	0.2	-	93488	63.00	0.2
Grate removal tool	01318	36.00	0.3	-	01318	36.00	0.3
QuickLok® Locking bar - 4" system	02899	11.00	0.1	-	02899	11.00	0.1

H100K-8 - Galvanized

H100KS-8 - Stainless

H200K-13

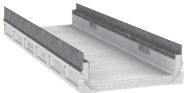


	Part No.	Price \$	Weight lbs	Pallet Qty	Part No.	Price \$	Weight lbs
Constant depth channel - 39.37" (1 m) ¹	93454	215.00	57.4	20	93455	463.00	57.4
Closing end cap	93458	45.00	1.0	-	93459	60.00	1.0
Debris strainer for 4" bottom knockout	93488	63.00	0.2	-	93488	63.00	0.2
Grate removal tool	01318	36.00	0.3	-	01318	36.00	0.3
QuickLok® Locking bar - 8" system	10457	28.00	0.5	-	10457	28.00	0.5

H200K-13 - Galvanized

H200KS-13 - Stainless

H300K-13



	Part No.	Price \$	Weight lbs	Pallet Qty	Part No.	Price \$	Weight lbs
Constant depth channel - 39.37" (1 m) ¹	93464	276.00	71.6	15	93465	552.00	71.6
Closing end cap	93468	59.00	1.4	-	93469	65.00	1.4
Grate removal tool	01318	36.00	0.3	-	01318	36.00	0.3
QuickLok® locking bar - 12" system	10458	37.00	0.7	-	10458	37.00	0.7

H300K-13 - Galvanized

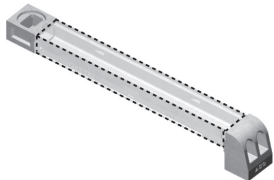
H300KS-13 - Stainless

Membrane No-Hub Drain



Membrane No-Hub Drain - Stainless Steel	01043	464.00	8.9	40
---	-------	--------	-----	----

Cross Sidewalk Drain (CSD)

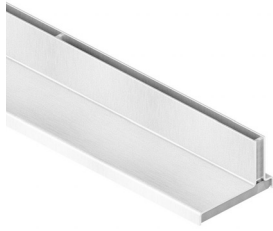


	Part No.	Price \$	Weight lbs	Pallet Qty
Down spout pipe inlet	96932	65.00	6.0	-
Curb outlet Type 6	96924	74.00	12.7	-

Cross Sidewalk Drain (CSD)

Part No. Price \$ Weight lbs Pallet Qty

LOAD CLASS C - EN 1433 - 56,202 LBS - 1,160 PSI



Brickslot 100 - for K100/KS100

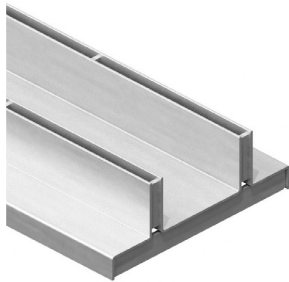
	Part No.	Price \$	Weight lbs	Pallet Qty
Type 441 Galvanized steel Brickslot - 39.37" (1 m)	138040	219.00	17.6	84
Type 442 Galvanized steel Brickslot - 19.69" (0.5 m)	138041	161.00	9.0	128
Type 482 Galvanized steel Brickslot access unit - 19.69" (0.5 m)	138042	327.00	16.4	50
Type 443 Stainless steel Brickslot - 39.37" (1 m)	138045	437.00	17.6	150
Type 444 Stainless steel Brickslot - 19.69" (0.5 m)	138046	264.00	9.0	200
Type 484 Stainless steel Brickslot access unit - 19.69" (0.5 m)	138047	616.00	16.4	50



Heel-resistant Brickslot 100 - for K100/KS100

Type 470 Galvanized steel Brickslot - 39.37" (1 m)	138050	248.00	18.0	84
Type 471 Galvanized steel Brickslot - 19.69" (0.5 m)	138051	168.00	9.2	128
Type 483 Galvanized steel Brickslot access unit - 19.69" (0.5 m)	138052	342.00	11.0	50
Type 472 Stainless steel Brickslot - 39.37" (1 m)	138055	449.00	18.0	150
Type 473 Stainless steel Brickslot - 19.69" (0.5 m)	138056	264.00	9.2	200
Type 485 Stainless steel Brickslot access unit - 19.69" (0.5 m)	138057	616.00	11.0	50

LOAD CLASS C - EN 1433 - 56,202 LBS - 774 PSI



Twinslot 200 - for K200/KS200

Type 641 Galvanized steel Brickslot - 39.37" (1 m)	138060	368.00	36.3	36
Type 642 Galvanized steel Brickslot - 19.69" (0.5 m)	138061	298.00	18.7	72
Type 682 Galvanized steel Brickslot access unit - 19.69" (0.5 m)	138062	602.00	32.4	25
Type 643 Stainless steel Brickslot - 39.37" (1 m)	138065	783.00	36.3	75
Type 644 Stainless steel Brickslot - 19.69" (0.5 m)	138066	589.00	18.7	100
Type 684 Stainless steel Brickslot access unit - 19.69" (0.5 m)	138067	952.00	32.4	25



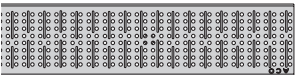
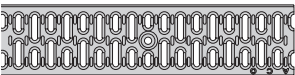

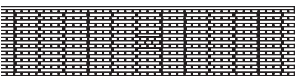
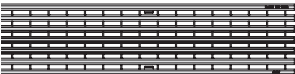
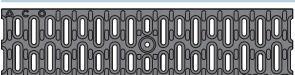
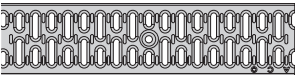
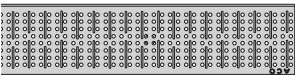
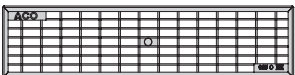
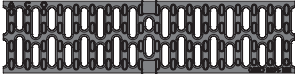


Heel Resistant Brickslot 200 - for K200/KS200

Type 670 Galvanized steel Brickslot - 39.37" (1 m)	138070	381.00	28.2	24
Type 672 Galvanized steel Brickslot - 19.69" (0.5 m)	138071	298.00	14.5	56
Type 683 Galvanized steel Brickslot access unit - 19.69" (0.5 m)	138072	602.00	29.0	25
Type 673 Stainless steel Brickslot - 39.37" (1 m)	138075	783.00	28.2	75
Type 674 Stainless steel Brickslot - 19.69" (0.5 m)	138076	561.00	14.5	100
Type 685 Stainless steel Brickslot access unit - 19.69" (0.5 m)	138077	946.00	29.0	25

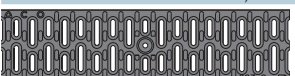

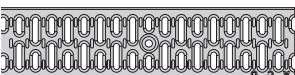
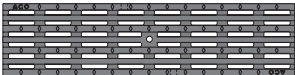

Brickslot Accessories

Grate removal tool for access unit	01318	36.00	0.3	-
------------------------------------	-------	--------------	-----	---

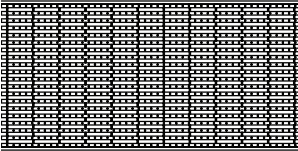
DrainLok K100/KS100 Grates

		Length in (mm)	Part No.	Price \$	Weight lbs	Pallet Qty
LOAD CLASS A - EN 1433 - 3,372 LBS - 70 PSI						
	Type 410D Galvanized perforated	39.37 (1000)	12666	72.00	6.3	200
	Type 412D Galvanized perforated	19.69 (500)	12667	53.00	3.2	400
	Type 451D Stainless perforated	39.37 (1000)	12664	244.00	6.3	200
	Type 453D Stainless perforated	19.69 (500)	12665	162.00	3.2	400
	Type 420D Galvanized slotted	39.37 (1000)	12610	47.00	5.9	200
	Type 421D Galvanized slotted	19.69 (500)	12611	31.00	3.0	400
	Type 450D Stainless slotted	39.37 (1000)	12640	215.00	5.9	200
	Type 452D Stainless slotted	19.69 (500)	12641	145.00	3.0	400
	Type 494D Black plastic longitudinal	19.69 (500)	99575	54.00	1.8	400
	Type 495D Gray plastic longitudinal	19.69 (500)	99576	54.00	1.8	400
	Type 496D Tan plastic longitudinal	19.69 (500)	99577	54.00	1.8	400
LOAD CLASS B - EN 1433 - 28,101 LBS - 580 PSI						
	Type 447D Stainless longitudinal	39.37 (1000)	142215	844.00	8.0	200
	Type 448D Stainless longitudinal	19.69 (500)	142216	599.00	4.0	-
	Type 438D Galvanized longitudinal	39.37 (1000)	132555	123.00	8.0	50
	Type 437D Galvanized longitudinal	19.69 (500)	132550	69.00	4.0	25
LOAD CLASS C - EN 1433 - 56,202 LBS - 1,160 PSI						
	Type 492D Black composite microgrip slotted	19.69 (500)	132720	69.00	2.2	50
	Type 425D Galvanized slotted	39.37 (1000)	12614	112.00	10.0	200
	Type 426D Galvanized slotted	19.69 (500)	12615	69.00	5.0	400
	Type 455D Stainless slotted	39.37 (1000)	12644	459.00	10.0	200
	Type 457D Stainless slotted	19.69 (500)	12645	233.00	5.0	400
	Type 411D Galvanized perforated	39.37 (1000)	12656	159.00	10.0	200
	Type 413D Galvanized perforated	19.69 (500)	12657	86.00	5.0	400
	Type 465D Stainless perforated	39.37 (1000)	12654	459.00	10.0	200
	Type 466D Stainless perforated	19.69 (500)	12655	235.00	5.0	400
	Type 405D Galvanized mesh	39.37 (1000)	132880	152.00	9.1	100
	Type 406D Galvanized mesh	19.69 (500)	132881	119.00	4.6	100
	Type 430D Stainless mesh	39.37 (1000)	132882	644.00	9.2	100
	Type 431D Stainless mesh	19.69 (500)	132883	463.00	4.6	100
	Type 460D Ductile iron slotted	19.69 (500)	12670	64.00	8.0	200
	Type 476D Ductile iron longitudinal	19.69 (500)	142171	96.00	8.4	200
	Type 480D Ductile iron wave	19.69 (500)	99578	105.00	8.0	160

QuickLok® K100/KS100 Grates

LOAD CLASS C - EN 1433 - 56,202 LBS - 1,160 PSI						
	Type 492Q Black plastic slotted	19.69 (500)	31710	65.00	3.5	204
	Type 479Q Ductile iron mosaic	19.69 (500)	97116	84.00	9.6	200
LOAD CLASS E - EN 1433 - 134,885 LBS - 2,785 PSI						
	Type 435Q Galvanized slotted	39.37 (1000)	31550	167.00	13.7	200
	Type 436Q Galvanized slotted	19.69 (500)	31551	107.00	6.8	400
	Type 490Q Stainless slotted	39.37 (1000)	31650	532.00	13.7	200
	Type 493Q Stainless slotted	19.69 (500)	31651	320.00	6.8	400
	Type 478Q Ductile iron longitudinal	19.69 (500)	03314	89.00	13.3	200
	Type 461Q Ductile iron slotted	19.69 (500)	96752	74.00	10.5	200

DrainLok K200/KS200 Grates

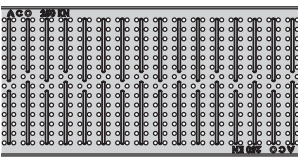
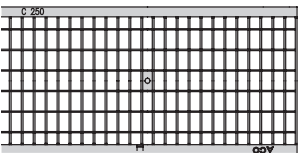
	Length in (mm)	Part No.	Price \$	Weight lbs	Pallet Qty
LOAD CLASS B - EN 1433 - 28,101 LBS - 387 PSI					
	39.37 (1000)	142219	1,630.00	18.0	100
Type 648D Stainless longitudinal	19.69 (500)	142220	1,095.00	9.0	100

LOAD CLASS C - EN 1433 - 56,202 LBS - 774 PSI

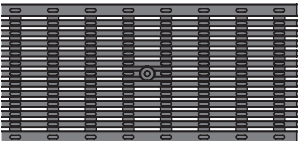
	19.69 (500)	142177	166.00	19.0	80
Type 676D Ductile iron longitudinal	19.69 (500)	142173	171.00	19.0	80
	19.69 (500)	99579	208.00	27.0	80

QuickLok® K200/KS200 Grates

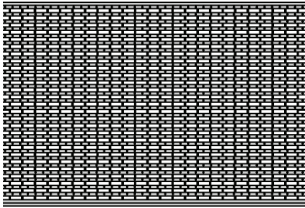
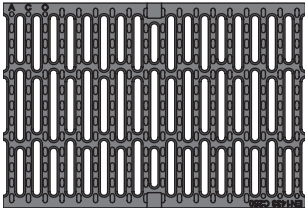
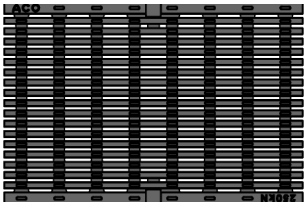
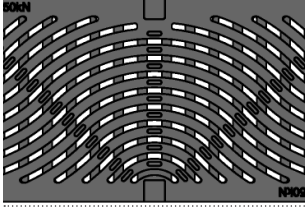
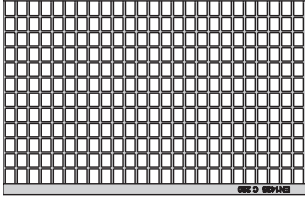
LOAD CLASS C - EN 1433 - 56,202 LBS - 774 PSI

	39.37 (1000)	98962	400.00	28.0	80
Type 613Q Galvanized perforated	19.69 (500)	98961	317.00	14.0	80
Type 665Q Stainless perforated	39.37 (1000)	98960	1,158.00	28.0	80
Type 666Q Stainless perforated	19.69 (500)	98959	768.00	14.0	80
	39.37 (1000)	10352	551.00	30.0	100
Type 606Q Galvanized mesh	19.69 (500)	10353	319.00	15.0	100
Type 630Q Stainless mesh	39.37 (1000)	16032	1,723.00	28.0	100
Type 631Q Stainless mesh	19.69 (500)	16033	1,110.00	14.0	100

LOAD CLASS E - EN 1433 - 134,885 LBS - 1,856 PSI

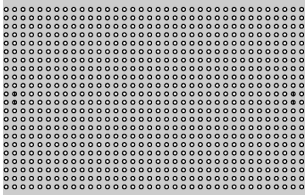
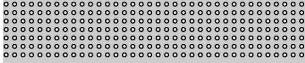
	19.69 (500)	138129	256.00	26.0	80
Type 661Q Ductile iron slotted	19.69 (500)	10351	248.00	37.0	48

DrainLok K300/KS300 Grates

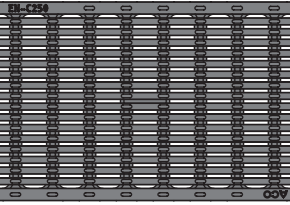
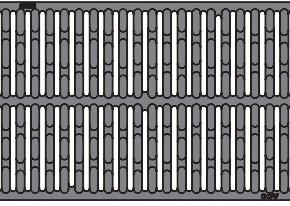
		Length in (mm)	Part No.	Price \$	Weight lbs	Pallet Qty
LOAD CLASS A - EN 1433 - 3,372 LBS - 58 PSI						
	Type 847D Stainless longitudinal	39.37 (1000)	142223	2,713.00	29.0	100
	Type 848D Stainless longitudinal	19.69 (500)	142224	1,807.00	14.0	100
LOAD CLASS C - EN 1433 - 56,202 LBS - 967 PSI						
	Type 860D Ductile iron slotted	19.69 (500)	13870	248.00	38.0	50
	Type 876D Ductile iron longitudinal	19.69 (500)	99588	276.00	35.0	48
	Type 880D Ductile iron wave	19.69 (500)	99581	312.00	37.0	36
	Type 805D Galvanized mesh Type 830D Stainless mesh	19.69 (500) 19.69 (500)	133675 133678	506.00 1,757.00	26.2 29.5	50 50

QuickLok® K300/KS300 grates

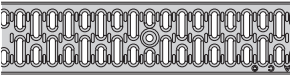
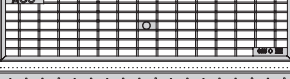
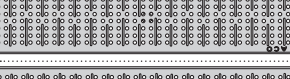
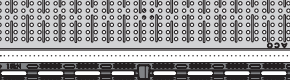

LOAD CLASS C - EN 1433 - 56,202 LBS - 967 PSI

	Type 811Q Galvanized perforated	39.37 (1000)	98967	912.00	68.0	80
	Type 813Q Galvanized perforated	19.69 (500)	98966	609.00	34.0	80
	Type 865Q Stainless perforated	39.37 (1000)	98968	2,148.00	68.0	80
	Type 866Q Stainless perforated	19.69 (500)	98969	1,516.00	35.0	80

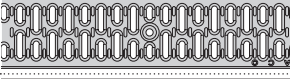
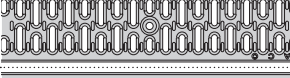

QuickLok® K300/KS300 Grates (cont.)

		Length in (mm)	Part No.	Price \$	Weight lbs	Pallet Qty
LOAD CLASS E - EN 1433 - 134,885 LBS - 2,321 PSI						
	Type 878Q Ductile iron longitudinal	19.69 (500)	138130	373.00	52.0	36
	Type 861Q Ductile iron slotted	19.69 (500)	10431	373.00	58.0	36

QuickLok® K100/KS100 Grates

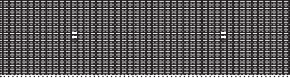
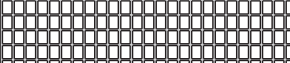
		Length in (mm)	Part No.	Price \$	Weight lbs	Pallet Qty
LOAD CLASS A - EN 1433 - 3,372 LBS - 116 PSI						
	Type 420Q Galvanized slotted	39.37 (1000)	31530	41.00	5.5	200
	Type 421Q Galvanized slotted	19.69 (500)	31531	29.00	2.8	400
	Type 450Q Stainless slotted	39.37 (1000)	31630	206.00	5.9	200
	Type 452Q Stainless slotted	19.69 (500)	31631	139.00	2.8	400
	Type 430Q Stainless mesh	19.69 (500)	141744	644.00	8.0	400
	Type 451Q Stainless perforated	39.37 (1000)	98883	235.00	6.3	200
	Type 410Q Galvanized perforated ¹	39.37 (1000)	35908	69.00	6.3	200
	Type 412Q Galvanized perforated ¹	19.69 (500)	98879	51.00	3.2	400
	Type 494Q Black plastic longitudinal	19.69 (500)	97393	38.00	1.8	416
	Type 495Q Gray plastic longitudinal		97385	38.00		

LOAD CLASS C - EN 1433 - 56,202 LBS - 1,934 PSI

	Type 425Q Galvanized slotted ¹	39.37 (1000)	31540	106.00	8.8	200
	Type 426Q Galvanized slotted ¹	19.69 (500)	31541	65.00	4.4	400
	Type 455Q Stainless slotted ¹	39.37 (1000)	31640	443.00	8.8	200
	Type 457Q Stainless slotted ¹	19.69 (500)	31641	226.00	4.4	400
	Type 411Q Galvanized perforated ¹	39.37 (1000)	98905	152.00	11.3	200
	Type 413Q Galvanized perforated ¹	19.69 (500)	98918	81.00	5.7	400

QuickLok® K300/KS300 Grates

LOAD CLASS C - EN 1433 - 56,202 LBS - 967 PSI

	Type 847Q Stainless longitudinal	39.37 (1000)	98975	2,503.00	28.6	100
	Type 848Q Stainless longitudinal	19.69 (500)	98995	1,668.00	14.5	100
	Type 830Q Stainless mesh	19.69 (500)	16006	1,703.00	29.5	100

H100K-6 channel with galvanized edge rail, locking bars and specified DrainLok grating \$/ft

LOAD CLASS A - EN 1433 - 3,372 LBS - 116 PSI	
Type 410D Galvanized perforated	66.46
Type 420D Galvanized slotted	58.84
Type 494D Black plastic longitudinal	77.44
Type 495D Gray plastic longitudinal	77.44
Type 496D Tan plastic longitudinal	77.44
LOAD CLASS B - EN 1433 - 28,101 LBS - 967 PSI	
Type 438D Galvanized longitudinal	82.01
Type 492D Black plastic slotted	86.59
LOAD CLASS C - EN 1433 - 56,202 LBS - 1,934 PSI	
Type 425D Galvanized slotted	78.66
Type 411D Galvanized perforated	92.99
Type 405D Galvanized mesh	90.85
Type 460D Ductile iron slotted	83.54
Type 476D Ductile iron longitudinal	103.05
Type 480D Ductile iron wave	108.54

H100K-6 channel with galvanized edge rail, locking bars and specified QuickLok® grating \$/ft

LOAD CLASS C - EN 1433 - 56,202 LBS - 1,934 PSI	
Type 492Q Composite slotted	90.85
Type 479Q Ductile iron mosaic	102.44
LOAD CLASS E - EN 1433 - 134,885 LBS - 4,641 PSI	
Type 461Q Ductile iron slotted	96.34
Type 435Q Galvanized slotted	102.13
Type 478Q Ductile iron longitudinal	105.49

H100KS-6 channel with stainless edge rail, locking bars and specified DrainLok grating \$/ft

LOAD CLASS A - EN 1433 - 3,372 LBS - 116 PSI	
Type 451D Stainless perforated	159.15
Type 450D Stainless slotted	150.30
Type 494D Black plastic longitudinal	117.68
Type 495D Gray plastic longitudinal	117.68
Type 496D Tan plastic longitudinal	117.68
LOAD CLASS B - EN 1433 - 28,101 LBS - 967 PSI	
Type 447D Stainless longitudinal	342.07
Type 492D Black plastic slotted	105.79
LOAD CLASS C - EN 1433 - 56,202 LBS - 1,934 PSI	
Type 455D Stainless slotted	224.70
Type 465D Stainless perforated	224.70
Type 430D Stainless mesh	281.10
Type 460D Ductile iron slotted	123.78
Type 476D Ductile iron longitudinal	143.29
Type 480D Ductile iron wave	148.78

H100K-8 channel with galvanized edge rail and specified DrainLok grating \$/ft

LOAD CLASS A - EN 1433 - 3,372 LBS - 116 PSI	
Type 410D Galvanized perforated grates	69.21
Type 420D Galvanized slotted	61.59
Type 494D Black Plastic longitudinal	80.18
Type 495D Gray Plastic longitudinal	80.18
Type 496D Tan Plastic longitudinal	80.18
LOAD CLASS B - EN 1433 - 28,101 LBS - 967 PSI	
Type 438D Galvanized longitudinal	84.76
Type 492D Black Plastic slotted	89.33
LOAD CLASS C - EN 1433 - 56,202 LBS - 1,934 PSI	
Type 425D Galvanized slotted	81.40
Type 411D Galvanized perforated	95.73
Type 405D Galvanized mesh	93.60
Type 460D Ductile iron slotted	86.28
Type 476D Ductile iron longitudinal	105.79
Type 480D Ductile iron wave	111.28

H100K-8 channel with galvanized edge rail, locking bars and specified QuickLok® grating \$/ft

LOAD CLASS C - EN 1433 - 56,202 LBS - 1,934 PSI	
Type 492Q Composite slotted	93.60
Type 479Q Ductile iron mosaic	105.18
LOAD CLASS E - EN 1433 - 134,885 LBS - 4,641 PSI	
Type 461Q Ductile iron slotted	99.09
Type 435Q Galvanized slotted	104.88
Type 478Q Ductile iron longitudinal	108.23

H100KS-8 channel with stainless edge rail and specified DrainLok grating \$/ft

LOAD CLASS A - EN 1433 - 3,372 LBS - 116 PSI	
Type 451D Stainless perforated	165.24
Type 450D Stainless slotted	156.40
Type 494D Black Plastic longitudinal	123.78
Type 495D Gray Plastic longitudinal	123.78
Type 496D Tan Plastic longitudinal	123.78
LOAD CLASS B - EN 1433 - 28,101 LBS - 967 PSI	
Type 447D Stainless longitudinal	348.17
Type 492D Black Plastic slotted	132.93
LOAD CLASS C - EN 1433 - 56,202 LBS - 1,934 PSI	
Type 455D Stainless slotted	230.79
Type 465D Stainless perforated	230.79
Type 430D Stainless mesh	287.20
Type 460D Ductile iron slotted	129.88
Type 476D Ductile iron longitudinal	149.39
Type 480D Ductile iron wave	154.88

H100KS channel with stainless edge rail, locking bars and specified QuickLok® grating

LOAD CLASS C - EN 1433 - 56,202 LBS - 1,934 PSI	
Type 492Q Composite slotted	137.20
Type 479Q Ductile iron mosaic	148.78
LOAD CLASS E - EN 1433 - 134,885 LBS - 4,641 PSI	
Type 461Q Ductile iron slotted	142.68
Type 490Q Stainless slotted	259.76
Type 478Q Ductile iron longitudinal	151.83

H200K-13 channel with galvanized edge rail and specified DrainLok grating \$/ft

LOAD CLASS C - EN 1433 - 56,202 LBS - 967 PSI	
Type 660D Ductile iron slotted grate	166.77
Type 676D Ductile iron longitudinal grate	169.82
Type 680D Ductile iron wave grate	192.38

H200K-13 channel with galvanized edge rail, locking bars and specified QuickLok® grating

LOAD CLASS C - EN 1433 - 56,202 LBS - 967 PSI	
Type 611Q Galvanized perforated grate	204.57
Type 605Q Galvanized mesh grate	250.61
LOAD CLASS E - EN 1433 - 134,885 LBS - 2,321 PSI	
Type 678Q Ductile iron longitudinal grate	238.72
Type 661Q Ductile iron slotted grate	233.84

H200KS-13 channel with stainless edge rail and specified DrainLok grating \$/ft

LOAD CLASS B - EN 1433 - 28,101 LBS - 483 PSI	
Type 647D Stainless longitudinal grate	638.11
LOAD CLASS C - EN 1433 - 56,202 LBS - 967 PSI	
Type 660D Ductile iron slotted grate	242.38
Type 676D Ductile iron longitudinal grate	245.43
Type 680D Ductile iron wave grate	267.99

H200KS-13 channel with stainless edge rail, locking bars and specified QuickLok® grating \$/ft

LOAD CLASS C - EN 1433 - 56,202 LBS - 967 PSI	
Type 665Q Stainless steel perforated grate	511.28
Type 630Q Stainless mesh grate	683.54
LOAD CLASS E - EN 1433 - 134,885 LBS - 2,321 PSI	
Type 678Q Ductile iron longitudinal grate	314.33
Type 661Q Ductile iron slotted grate	309.45

H300K-13 channel with galvanized edge rail and specified DrainLok grating \$/ft

LOAD CLASS C - EN 1433 - 56,202 LBS - 967 PSI	
Type 805D Galvanized mesh grate	392.68
Type 860D Ductile iron slotted grate	235.37
Type 876D Ductile iron longitudinal grate	252.44
Type 880D Ductile iron wave grate	274.39

H300K-13 channel with galvanized edge rail, locking bars and specified QuickLok® grating \$/ft

LOAD CLASS C - EN 1433 - 56,202 LBS - 967 PSI	
Type 811Q Galvanized perforated grate	384.76
LOAD CLASS E - EN 1433 - 134,885 LBS - 2,321 PSI	
Type 878Q Ductile iron longitudinal grate	334.15
Type 861Q Ductile iron slotted grate	334.15

H300KS-13 channel with stainless edge rail and specified DrainLok grating \$/ft

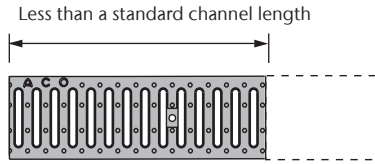
LOAD CLASS A - EN 1433 - 3,372 LBS - 58 PSI	
Type 847D Stainless longitudinal grate	995.43
LOAD CLASS C - EN 1433 - 56,202 LBS - 967 PSI	
Type 865Q Stainless steel perforated	845.73
Type 830D Stainless mesh grate	1,239.63
Type 860D Ductile iron slotted grate	319.51
Type 876D Ductile iron longitudinal grate	336.59
Type 880D Ductile iron wave grate	358.54

H300KS-13 channel with stainless edge rail, locking bars and specified QuickLok® grating \$/ft

LOAD CLASS E - EN 1433 - 134,885 LBS - 2,321 PSI	
Type 878Q Ductile iron longitudinal grate	418.29
Type 861Q Ductile iron slotted grate	418.29

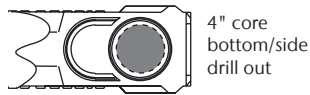
POLYMER CONCRETE

Shortened Channel



Description	Part No.	Price \$
CUT & MALE/FEMALE DETAILS REMODELED		
K100/KS100/K50/H100K	06627	68.50
K200/KS200	06809	117.00
K300/KS300	06810	163.00
S100K	92782	120.00
S200K	06811	169.00
S300K	98335	215.00
SlabDrain 200SK/200K	06812	179.00
SlabDrain 300SK/300K	06813	222.00
Spill Curbs - Straight or angled cut	06505	196.50

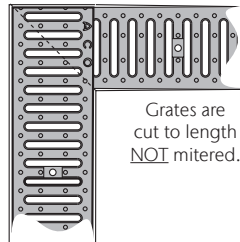
Bottom/Side Outlet



CORE DRILL - POLYMER CONCRETE ONLY		
Standard 4" and 6" Sch. 40 pipes	92677	56.00
Non-standard pipe sizes - up to 10"	92688	163.00

Miter

Dotted line shows mitered channel

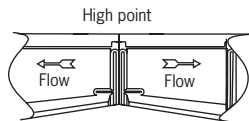


CUT & BONDED - POLYMER CONCRETE		
K100/KS100/K50/KS50/H100K/ H100KS/NW100	06630	186.00

Shipping: parts are shipped assembled with grates in place

Direction Change

Polymer concrete channels

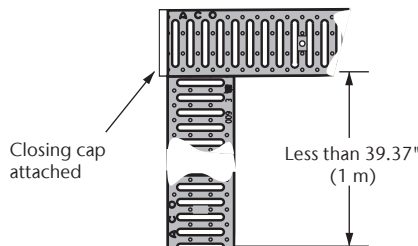


MALE/FEMALE DETAILS REMODELED - POLYMER CONCRETE		
K100/KS100/K50/H100K	06628	68.50
S100K	92836	80.00
S200K/S300K	98356	96.00

Note: parts are only shipped un-assembled.

POLYMER CONCRETE

Shortened Tee



CUT & BONDED OR MALE/FEMALE DETAILS ADDED		
K100/KS100/NW100	06632	344.00
K200/KS200/S200K/S100K	06838	370.00
K300/KS300/S300K	06839	400.00
S100K/H100K	92776	400.00

Note: parts are only shipped assembled where one channel is less than 19.69" (500 mm). Un-assembled channels have male/female to aid alignment on site.