

### SlabDrain Parts Table

H100-8, H100-10



Part No.	Price \$	Weight lbs	Pallet Qty	Part No.	Price \$	Weight lbs
H100-8 - No Rail				H100-10 - No Rail		
Constant depth channel - 39.37" (1 m)	00985 <b>155.00</b>	20.0	56	00549 <b>155.00</b>	25.0	
Closing end cap	05935 <b>21.00</b>	1.0	-	05939 <b>21.00</b>	1.0	
Debris strainer for 4" bottom knockout	93488 <b>63.00</b>	0.2	-	93488 <b>63.00</b>	0.2	
Grate removal tool	01318 <b>36.00</b>	0.3	-	01318 <b>36.00</b>	0.3	
QuickLok® Locking bar - 4" system	02899 <b>11.00</b>	0.1	-	02899 <b>11.00</b>	0.1	

Membrane No-Hub Drain



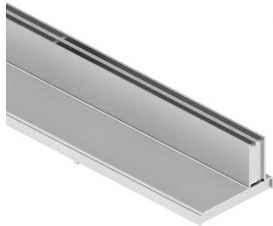
Membrane No-Hub Drain - Stainless Steel	01043 <b>464.00</b>	8.9	40
---	---------------------	-----	----

LOAD CLASS C - EN 1433 - 56,202 LBS - 1,160 PSI



### Brickslot 100 - for K100/KS100

	Part No.	Price \$	Weight lbs	Pallet Qty
Type 441 Galvanized steel Brickslot - 39.37" (1 m)	138040	<b>219.00</b>	17.6	84
Type 442 Galvanized steel Brickslot - 19.69" (0.5 m)	138041	<b>161.00</b>	9.0	128
Type 482 Galvanized steel Brickslot access unit - 19.69" (0.5 m)	138042	<b>327.00</b>	16.4	50
Type 443 Stainless steel Brickslot - 39.37" (1 m)	138045	<b>437.00</b>	17.6	150
Type 444 Stainless steel Brickslot - 19.69" (0.5 m)	138046	<b>264.00</b>	9.0	200
Type 484 Stainless steel Brickslot access unit - 19.69" (0.5 m)	138047	<b>616.00</b>	16.4	50



### Heel-resistant Brickslot 100 - for K100/KS100

Type 470 Galvanized steel Brickslot - 39.37" (1 m)	138050	<b>248.00</b>	18.0	84
Type 471 Galvanized steel Brickslot - 19.69" (0.5 m)	138051	<b>168.00</b>	9.2	128
Type 483 Galvanized steel Brickslot access unit - 19.69" (0.5 m)	138052	<b>342.00</b>	11.0	50
Type 472 Stainless steel Brickslot - 39.37" (1 m)	138055	<b>449.00</b>	18.0	150
Type 473 Stainless steel Brickslot - 19.69" (0.5 m)	138056	<b>264.00</b>	9.2	200
Type 485 Stainless steel Brickslot access unit - 19.69" (0.5 m)	138057	<b>616.00</b>	11.0	50

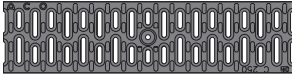
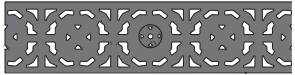
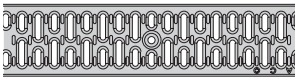
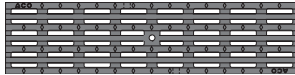
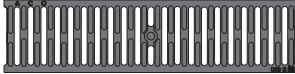
### Brickslot Accessories

Grate removal tool for access unit	01318	<b>36.00</b>	0.3	-
------------------------------------	-------	--------------	-----	---

**H100-8/H100-10 channel (no rail), locking bars and specified QuickLok® grating**      \$/ft

<b>LOAD CLASS C - EN 1433 - 56,202 LBS - 1,934 PSI</b>	
Type 492Q Composite slotted	93.60
Type 479Q Ductile iron mosaic	105.18
<b>LOAD CLASS E - EN 1433 - 134,885 LBS - 4,641 PSI</b>	
Type 461Q Ductile iron slotted	99.09
Type 435Q Galvanized slotted	104.88
Type 490Q Stainless slotted	216.16
Type 478Q Ductile iron longitudinal	108.23

**QuickLok® K100/KS100 Grates**

<b>LOAD CLASS C - EN 1433 - 56,202 LBS - 1,160 PSI</b>						
	Type 492Q Black plastic slotted	19.69 (500)	31710	<b>65.00</b>	3.5	204
	Type 479Q Ductile iron mosaic	19.69 (500)	97116	<b>84.00</b>	9.6	200
<b>LOAD CLASS E - EN 1433 - 134,885 LBS - 2,785 PSI</b>						
	Type 435Q Galvanized slotted	39.37 (1000)	31550	<b>167.00</b>	13.7	200
	Type 436Q Galvanized slotted	19.69 (500)	31551	<b>107.00</b>	6.8	400
	Type 490Q Stainless slotted	39.37 (1000)	31650	<b>532.00</b>	13.7	200
	Type 493Q Stainless slotted	19.69 (500)	31651	<b>320.00</b>	6.8	400
	Type 478Q Ductile iron longitudinal	19.69 (500)	03314	<b>89.00</b>	13.3	200
	Type 461Q Ductile iron slotted	19.69 (500)	96752	<b>74.00</b>	10.5	200