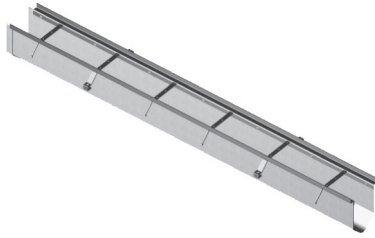


FG200 Channel -  
108" (2.75 m)



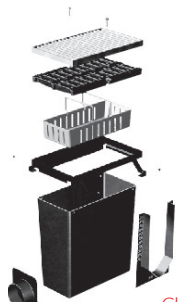
FG200 Channel -  
36" (0.915 m)



Outlet Cap



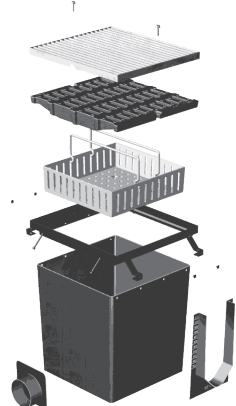
F660 Catch Basin and  
Accessories



Pipe adapter

Channel adapter

F880 Catch Basin and  
Accessories



Pipe adapter

Channel adapter

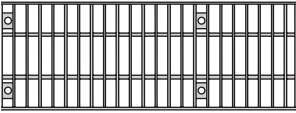
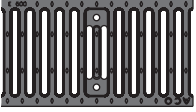
### FlowDrain FG200 Parts Table

	Part No.	Price \$	Weight lbs
F801 Sloped channel - 108" (2.75 m)	99006	<b>730.00</b>	11.0
F802 Sloped channel - 108" (2.75 m)	99013	<b>730.00</b>	12.0
F803 Sloped channel - 108" (2.75 m)	99021	<b>730.00</b>	13.0
F803N Constant depth channel - 108" (2.75 m)	99048	<b>730.00</b>	15.5
F803N3 Constant depth channel - 36" (0.915 m)	99034	<b>331.00</b>	5.2
F804 Sloped channel - 108" (2.75 m)	99055	<b>730.00</b>	14.1
F805 Sloped channel - 108" (2.75 m)	99062	<b>730.00</b>	15.2
F806 Sloped channel - 108" (2.75 m)	99071	<b>730.00</b>	16.3
F806N Constant depth channel - 108" (2.75 m)	99095	<b>730.00</b>	16.3
F806N3 Constant depth channel - 36" (0.915 m)	99084	<b>331.00</b>	5.5
F807 Sloped channel - 108" (2.75 m)	99109	<b>730.00</b>	17.4
F808 Sloped channel - 108" (2.75 m)	99116	<b>730.00</b>	18.5
F809 Sloped channel - 108" (2.75 m)	99123	<b>730.00</b>	19.6
F809N Constant depth channel - 108" (2.75 m)	99145	<b>730.00</b>	19.6
F809N3 Constant depth channel - 36" (0.915 m)	99132	<b>331.00</b>	6.5
F810 Sloped channel - 108" (2.75 m)	99156	<b>730.00</b>	20.7
F811 Sloped channel - 108" (2.75 m)	99162	<b>730.00</b>	21.8
F812 Sloped channel - 108" (2.75 m)	99175	<b>730.00</b>	23.0
F812N Constant depth channel - 108" (2.75 m)	99192	<b>730.00</b>	23.0
F812N3 Constant depth channel - 36" (0.915 m)	99186	<b>331.00</b>	7.7
Black coated steel frame - 108" (2.75 m)	97066	<b>449.00</b>	57.9
Black coated steel frame - 36" (0.915 m)	35916	<b>176.00</b>	19.3
Galvanized steel frame - 108" (2.75 m)	97079	<b>532.00</b>	57.9
Galvanized steel frame - 36" (0.915 m)	98538	<b>204.00</b>	19.3
Stainless steel frame - 108" (2.75 m)	97087	<b>1,397.00</b>	57.9
Stainless steel frame - 36" (0.915 m)	98545	<b>511.00</b>	19.3
Closing cap (Female) with black end frame	98365	<b>112.00</b>	1.1
Closing cap (Female) with galvanized steel end frame	98386	<b>112.00</b>	1.1
Closing cap (Female) with stainless steel end frame	98375	<b>123.00</b>	1.1
Closing cap (Male) with black end frame	98363	<b>112.00</b>	1.3
Closing cap (Male) with galvanized steel end frame	98382	<b>112.00</b>	1.3
Closing cap (Male) with stainless steel end frame	98372	<b>123.00</b>	1.3
Outlet cap (Male) with black end frame	98361	<b>112.00</b>	1.8
Outlet cap (Male) with galvanized steel end frame	98381	<b>112.00</b>	1.8
Outlet cap (Male) with stainless steel end frame	98373	<b>123.00</b>	1.8
Vertical outlet adapter - 4", 6" or 8" outlet	98103	<b>106.00</b>	1.6
FG200 channel/catch basin adapter	98171	<b>106.00</b>	1.1
F660 Catch basin - 24" x 12"	98069	<b>551.00</b>	22.0
F660 Black coated steel frame	97995	<b>215.00</b>	13.8
F660 Galvanized steel frame	98008	<b>229.00</b>	14.4
F660 Stainless steel frame	98013	<b>464.00</b>	14.4
F660 Plastic trash bucket	98067	<b>339.00</b>	5.0
F880 Catch basin - 24" x 24"	98075	<b>816.00</b>	22.0
F880 Black coated steel frame	98021	<b>270.00</b>	23.2
F880 Galvanized steel frame	98034	<b>326.00</b>	24.2
F880 Stainless steel frame*	98048	<b>696.00</b>	24.2
F880 Plastic trash bucket	98059	<b>437.00</b>	8.4
4" Pipe plain end adapter	97425	<b>63.00</b>	0.4
6" Pipe plain end adapter	97438	<b>63.00</b>	0.6
8" pipe plain end adapter	97444	<b>63.00</b>	0.9
Replacement galvanized steel socket head bolts (Qty 4) - for bar grate	93895	<b>11.00</b>	0.4
Replacement stainless steel socket head bolts (Qty 4) - for bar grate	93897	<b>15.00</b>	0.4
Replacement stainless steel hex head bolts (Qty 2) - for iron grates	93892	<b>9.00</b>	0.2

#### Notes

1. Channel weights are for fiberglass body only - add frame weight for total unit weight.
2. Closing/Outlet caps can be cut down to suit all channels.
3. Frames supplied with plastic snap-fit studs for connecting to fiberglass body.
4. See page 13 for grate details.

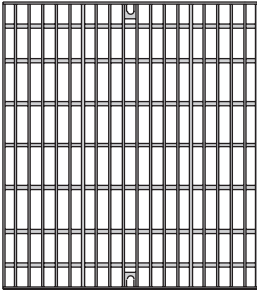
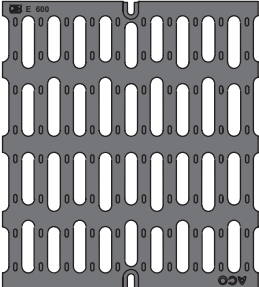
### FG200 Grates

		Length in	Part No.	Price \$	Weight lbs	Pallet Qty
<b>LOAD CLASS C - EN 1433 - 56,202 LBS - 967 PSI</b>						
	Galvanized steel bar	36.0	93899	<b>323.00</b>	28.6	90
	Stainless steel bar	36.0	93891	<b>1,218.00</b>	28.6	
<b>LOAD CLASS E - EN 1433 - 134,885 LBS - 2,321 PSI</b>						
	Ductile iron slotted	18.0	93896	<b>151.00</b>	28.7	80
	Ductile iron longitudinal	18.0	93893	<b>229.00</b>	25.5	80

### F660 Grates

<b>LOAD CLASS C - EN 1433 - 56,202 LBS - 739 PSI</b>						
	Galvanized steel bar	24.0	97443	<b>433.00</b>	29.0	20
	Stainless steel bar	24.0	97442	<b>1,689.00</b>	28.0	
<b>LOAD CLASS E - EN 1433 - 134,885 LBS - 1,773 PSI</b>						
	Ductile iron slotted	24.0	97449	<b>532.00</b>	75.0	20

### F880 Grates

<b>LOAD CLASS C - EN 1433 - 56,202 LBS - 739 PSI</b>						
	Galvanized steel bar	24.0	97452	<b>630.00</b>	52.0	25
	Stainless steel bar	24.0	97455	<b>2,457.00</b>	48.0	
<b>LOAD CLASS E - EN 1433 - 134,885 LBS - 1,773 PSI</b>						
	Ductile iron slotted	24.0	97453	<b>1,731.00</b>	209.0	10

**FlowDrain FG200 channel with galvanized edge rail and specified grating**      \$/ft

LOAD CLASS C - EN 1433 - 56,202 LBS - 967 PSI	
Galvanized bar	247.89
LOAD CLASS E - EN 1433 - 134,885 LBS - 2,321 PSI	
Ductile iron slotted	240.89
Ductile iron longitudinal	292.89

**FlowDrain FG200 channel with stainless edge rail and specified grating**      \$/ft

LOAD CLASS C - EN 1433 - 56,202 LBS - 967 PSI	
Stainless bar	642.33
LOAD CLASS E - EN 1433 - 134,885 LBS - 2,321 PSI	
Ductile iron slotted	337.00
Ductile iron longitudinal	389.00

**FlowDrain FG200 channel with black edge rail and specified grating**      \$/ft

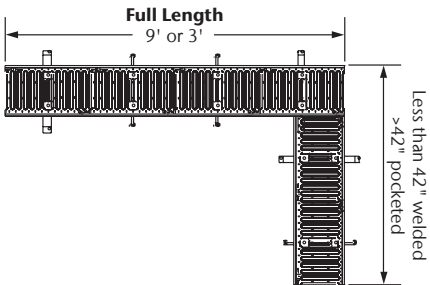
LOAD CLASS C - EN 1433 - 56,202 LBS - 967 PSI	
Galvanized bar	238.67
Stainless bar	537.00
LOAD CLASS E - EN 1433 - 134,885 LBS - 2,321 PSI	
Ductile iron slotted	231.67
Ductile iron longitudinal	283.67

**FIBERGLASS**

Description	Part No.	Price \$
-------------	----------	----------

CUT & MALE/FEMALE DETAILS REMODELED		
FG200	0951F	<b>370.00</b>

Note: parts are only shipped assembled where one channel is less than 36" (915 mm). Un-assembled channels have male/female to aid alignment on site.



**FIBERGLASS**

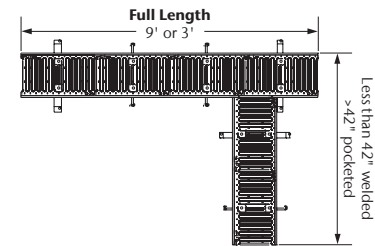
Description	Part No.	Price \$
-------------	----------	----------

CUT & MALE/FEMALE DETAILS REMODELED		
FG200	0953F	<b>154.50</b>

FIBERGLASS FG200		
Bottom outlet	0954F	<b>80.00</b>
Side outlet	0956F	<b>100.00</b>

CUT & BONDED - FIBERGLASS FG200		
FG200	0950F	<b>308.00</b>

Shipping: parts are shipped assembled  
Note: frames are cut to length.



MALE/FEMALE DETAILS REMODELED - FIBERGLASS		
FG200 neutral	0969F	<b>135.50</b>
FG200 sloping	0952F	<b>154.50</b>

SHORTENED CHANNEL & MALE/FEMALE DETAILS REMODELED		
FG200 sloping	92885	<b>284.00</b>

**FlowDrain FG200 Spare Parts**

	Part No.	Price \$
<b>FG200 SLOTTED DUCTILE IRON GRATE 18" ASSEMBLY</b>	93896	<b>151.00</b>
FG200 Bolts bagged stainless	93892	<b>9.00</b>
FG200 Ductile iron grate, 18"	05903	<b>150.00</b>
<b>FG200 ADA DUCTILE IRON GRATE 18" ASSEMBLY</b>	93893	<b>229.00</b>
FG200 Bolts bagged stainless	93892	<b>9.00</b>
FG200 Longitudinal grate, 18"	05904	<b>222.00</b>
<b>F660 DUCTILE IRON SLOTTED GRATE ASSEMBLY</b>	97449	<b>532.00</b>
FG Bolts bagged galvanized Hex hd	93889	<b>7.00</b>
F660 Ductile iron slotted grate	91342	<b>539.00</b>
<b>F880 DUCTILE IRON SLOTTED GRATE ASSEMBLY</b>	97453	<b>1,731.00</b>
FG Bolts bagged galvanized Hex hd	93889	<b>7.00</b>
F880 Slotted grate ductile iron	95112	<b>1,731.00</b>
<b>FG200 GALVANIZED FRAME 108" ASSEMBLY</b>	97079	<b>532.00</b>
5/16"-18x 1" Hex bolt	92434	<b>0.33</b>
FG Nylon ratchet fastener	92523	<b>0.33</b>
FG200 Frame 9' galvanized	97075	<b>525.00</b>
<b>F880 DUCTILE IRON SLOTTED GRATE ASSEMBLY</b>	97453	<b>1,731.00</b>
FG Bolts bagged galvanized Hex hd	93889	<b>7.00</b>
F880 Slotted grate ductile iron	95112	<b>1,731.00</b>
<b>FG200 GALVANIZED FRAME 108" ASSEMBLY</b>	97079	<b>532.00</b>
5/16"-18x 1" Hex bolt	92434	<b>0.33</b>
FG Nylon ratchet fastener	92523	<b>0.33</b>
FG200 Frame 9' galvanized	97075	<b>525.00</b>
<b>FG200 GALVANIZED FRAME 36" ASSEMBLY</b>	98538	<b>204.00</b>
5/16"-18x 1" Hex bolt	92434	<b>0.33</b>
FG Nylon ratchet fastener	92523	<b>0.33</b>
FG200 Frame 3' galvanized	98536	<b>204.00</b>

**FlowDrain FG200 Spare Parts**

	Part No.	Price \$
<b>FG200 CLOSE CAP FEMALE W/GALVANIZED END FRAME</b>	98386	<b>112.00</b>
FG200 Shallow end closing cap	98158	<b>71.00</b>
FG200 Galvanized end frame	98384	<b>42.00</b>
<b>FG200 CLOSE CAP MALE W/GALVANIZED END FRAME</b>	98382	<b>112.00</b>
FG200 Deep end closing cap	98145	<b>72.00</b>
FG200 Galvanized end frame	98384	<b>42.00</b>
<b>FG200 OUTLET CAP MALE W/GALVANIZED END FRAME</b>	98381	<b>112.00</b>
FG200 Outlet cap	98242	<b>76.00</b>
FG200 Galvanized end frame	98384	<b>42.00</b>
<b>F660 GALVANIZED FRAME</b>	98008	<b>229.00</b>
5/16"-18x 1" Hex bolt	92434	<b>0.33</b>
FG Nylon ratchet fastener	92523	<b>0.33</b>
F660 Catch basin frame galvanized	98004	<b>229.00</b>
<b>F880 BLACK COATED FRAME</b>	98034	<b>326.00</b>
5/16"-18x 1" Hex bolt	92434	<b>0.33</b>
FG Nylon ratchet fastener	92523	<b>0.33</b>
F880 Catch basin frame galvanized	98032	<b>326.00</b>
<b>FG200 GALVANIZED BAR GRATE 36" ASSEMBLY</b>	93899	<b>323.00</b>
FG200 Bolts bagged galvanized	93895	<b>11.00</b>
FG200 Galvanized steel bar grate 3'	94494	<b>319.00</b>
<b>FG200 STAINLESS FRAME 108" ASSEMBLY</b>	97087	<b>1,397.00</b>
5/16"-18x 1" Hex bolt	92434	<b>0.33</b>
FG Nylon ratchet fastener	92523	<b>0.33</b>
FG200 Frame 9' stainless	97083	<b>1,397.00</b>

**FlowDrain FG200 Spare Parts**

	Part No.	Price \$
<b>FG200 BLACK FRAME 108" ASSEMBLY</b>	97066	<b>449.00</b>
5/16"-18x 1" Hex bolt	92434	<b>0.33</b>
FG Nylon ratchet fastener	92523	<b>0.33</b>
FG200 Frame 9' black	97064	<b>449.00</b>
<b>FG200 BLACK FRAME 36" ASSEMBLY</b>	35916	<b>176.00</b>
5/16"-18x 1" Hex bolt	92434	<b>0.33</b>
FG Nylon ratchet fastener	92523	<b>0.33</b>
FG200 Frame 3' black	98522	<b>179.00</b>
<b>FG200 CLOSE CAP FEMALE W/BLACK END FRAME</b>	98365	<b>112.00</b>
FG200 Shallow end closing cap	98158	<b>71.00</b>
FG200 Black end frame	98367	<b>42.00</b>
<b>FG200 CLOSE CAP MALE W/BLACK END FRAME</b>	98363	<b>112.00</b>
FG200 Deep end closing cap	98145	<b>72.00</b>
FG200 Black end frame	98367	<b>42.00</b>
<b>FG200 OUTLET CAP MALE W/BLACK END FRAME</b>	98361	<b>112.00</b>
FG200 Outlet cap	98242	<b>76.00</b>
FG200 Black end frame	98367	<b>42.00</b>
<b>F660 BLACK COATED FRAME</b>	97995	<b>215.00</b>
5/16"-18x 1" Hex bolt	92434	<b>0.33</b>
FG Nylon ratchet fastener	92523	<b>0.33</b>
F660 Catch basin frame black	97993	<b>215.00</b>
<b>F880 BLACK COATED FRAME</b>	98021	<b>270.00</b>
5/16"-18x 1" Hex bolt	92434	<b>0.33</b>
FG Nylon ratchet fastener	92523	<b>0.33</b>
F880 Catch basin frame black	98025	<b>270.00</b>

**FlowDrain FG200 Spare Parts**

	Part No.	Price \$
<b>FG200 STAINLESS FRAME 36" ASSEMBLY</b>	98545	<b>511.00</b>
5/16"-18x 1" Hex bolt	92434	<b>0.33</b>
FG Nylon ratchet fastener	92523	<b>0.33</b>
FG200 Frame 3' stainless	98543	<b>511.00</b>
<b>FG200 CLOSE CAP FEMALE W/STAINLESS END FRAME</b>	98375	<b>123.00</b>
FG200 Shallow end closing cap	98158	<b>71.00</b>
FG200 Stainless end frame	98379	<b>52.00</b>
<b>FG200 CLOSE CAP MALE W/STAINLESS END FRAME</b>	98372	<b>123.00</b>
FG200 Deep end closing cap	98145	<b>72.00</b>
FG200 Stainless end frame	98379	<b>52.00</b>
<b>FG200 OUTLET CAP MALE W/STAINLESS END FRAME</b>	98373	<b>123.00</b>
FG200 Outlet cap	98242	<b>76.00</b>
FG200 Stainless end frame	98379	<b>52.00</b>
<b>F660 STAINLESS STAINLESS FRAME</b>	98013	<b>464.00</b>
5/16"-18x 1" Hex bolt	92434	<b>0.33</b>
FG Nylon ratchet fastener	92523	<b>0.33</b>
F660 Catch basin frame stainless	98016	<b>464.00</b>
<b>F880 BLACK COATED STAINLESS FRAME</b>	98048	<b>696.00</b>
5/16"-18x 1" Hex bolt	92434	<b>0.33</b>
FG Nylon ratchet fastener	92523	<b>0.33</b>
F880 Catch basin frame stainless	98047	<b>696.00</b>

**FlowDrain FG200 Spare Parts**

	Part No.	Price \$
<b>FG200 STAINLESS BAR GRATE 36" ASSEMBLY</b>	93891	<b>1,218.00</b>
FG200 Bolts bagged stainless	93897	<b>15.00</b>
FG200 Stainless bar grate 3'	94506	<b>1,204.00</b>
<b>F660 GALVANIZED STAINLESS BAR GRATE ASSEMBLY</b>	97443	<b>433.00</b>
FG200 Bolts bagged galvanized	93884	<b>5.25</b>
F660 Galvanized bar grate	91661	<b>427.00</b>
<b>F880 GALVANIZED STAINLESS BAR GRATE ASSEMBLY</b>	97452	<b>630.00</b>
1/2-13 x 1 3/4 Galvanized soc hd	91675	<b>3.20</b>
F880 Galvanized bar grate	95358	<b>630.00</b>
<b>F660 STAINLESS BAR GRATE ASSEMBLY</b>	97442	<b>1,689.00</b>
1/2-13 x 1 3/4 s/s Socket hd cap s	94447	<b>4.20</b>
F660 Stainless Bar Grate	91665	<b>1,684.00</b>
<b>F880 STAINLESS BAR GRATE ASSEMBLY</b>	97455	<b>2,457.00</b>
Stainless SHCS for FG200 CB GRATE	93885	<b>9.00</b>
F880 Stainless Bar Grate	95354	<b>2,450.00</b>