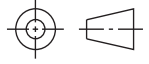
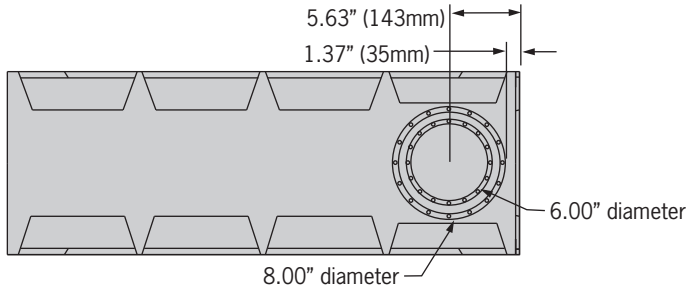
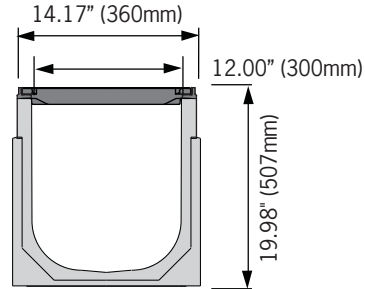
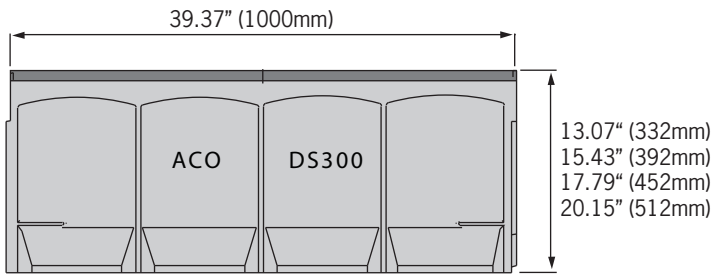
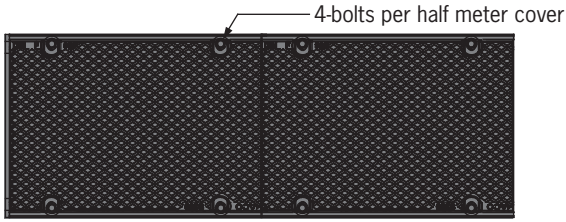


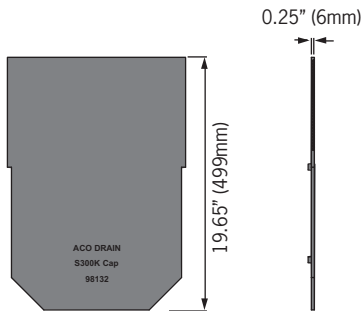
**DS300 with 4 bolt solid iron covers**



**One meter unit**



**Closing end cap**



*ACO Specification Information*

# ACO UTILITYDUCT

## DS300 with 4 bolt solid iron covers



ACO Specification Information

Description	Part No	Invert (inches)	Overall (inches)	Wgt lbs
DS3001 polymer concrete duct with ductile iron covers	99258	11.89	13.07	216.6
DS3010 polymer concrete duct with ductile iron covers	99260	14.25	15.43	229.6
DS3020 polymer concrete duct with ductile iron covers	99261	16.61	17.79	242.6
DS3030 polymer concrete duct with ductile iron covers	99262	18.98	20.15	254.6
<b>Accessories</b>				
End cap	98132	-	-	3.4

### Notes

1. DS300 duct is sold complete, with channel and cover.
2. Preformed drill-out for 6" and 8" pipe on underside of channel.

### Specifications

#### General

The surface drainage system shall be ACO UtilityDuct DS300 complete with Class E solid ductile iron covers secured with bolted lockings (4-bolts per half meter cover) as manufactured by ACO Polymer Products, Inc. or equal approved.

#### Materials

Duct system bodies are manufactured from polyester polymer concrete with minimum properties as follows:

Compressive strength: 14,000 psi  
Flexural strength: 4,000 psi  
Water absorption 0.07%

Frost proof

Salt proof

Dilute acid and alkali resistant

Surface burn characteristics of the material shall comply with UL 723

The nominal clear opening shall be 12" (300mm) with overall width of 14.17" (360mm). Modular units shall be manufactured with neutral invert and have a wall thickness of at least 1.18" (30mm). Each unit will feature a full radius in the trench bottom and a male to female interconnecting end profile. Units shall have horizontal cast in anchoring features on the outside wall to ensure maximum mechanical bond to the surrounding bedding material and pavement surface. The ductile iron edge rail will be integrally cast in by the manufacturer to ensure maximum homogeneity between polymer concrete body and edge rail.

#### Covers

Covers are manufactured from ductile iron to ASTM 536-84 - Grade 65-45-12. Covers are locked in place with 4 qty M10 high tensile steel bolts with friction grip washers per half meter (19.69") cover. Covers are load tested to meet EN 1433 Load Class E - 2,323psi. After removal of covers there shall be uninterrupted access to the trench to aid maintenance.

#### Installation

The trench drain system shall be installed in accordance with the manufacturer's installation instructions and recommendations.

### ACO Polymer Products, Inc.

#### Northeast Sales Office

P.O. Box 245  
Chardon, OH 44024  
Tel: (440) 285-7000  
Toll free: (800) 543-4764  
Fax: (440) 285-7005

#### West Sales Office

P.O. Box 12067  
Casa Grande, AZ 85130  
Tel: (520) 421-9988  
Toll Free: (888) 490-9552  
Fax: (520) 421-9899

#### Southeast Sales Office

4211 Pleasant Road  
Fort Mill, SC 29708  
Toll free: (800) 543-4764  
Fax: (803) 802-1063

#### Follow us on



#### Electronic Contact:

info@acousa.com  
www.acousa.com



© August 7, 2013 ACO Polymer Products, Inc. This information is believed to be accurate but it is not guaranteed to be so. We cannot assume liability for results that buyer obtains with our product since conditions of use are beyond the control of the company. It is the customer's responsibility to evaluate suitability and safety of product for his own use. ACO Polymer Products Inc. reserves the right to change the product and specifications without notice. Re-order # DT007