

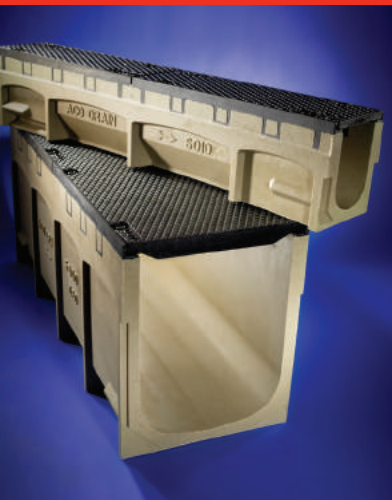
The ACO Group

Established in 1946, the ACO Group has been a major manufacturer of products for the construction and building industry for almost 70 years.

The Group operates on a global basis and has companies in more than 40 countries with manufacturing on 4 continents.

ACO employs more than 4,000 people and has sales in excess of \$850 million.

ACO has been present in the USA since 1978 and has offices and manufacturing facilities nationwide.



ACO UtilityDuct

Developed from the industry leading modular surface drainage system ACO Drain, ACO Utility gives the same versatile 'plug and play' approach to surface ducting.

A surface ducting system is designed to protect cables, pipes etc. against external influences. The duct also acts as a shield to prevent its potentially hazardous contents from causing damage or injury to maintenance workers, passing pedestrians and nearby property.

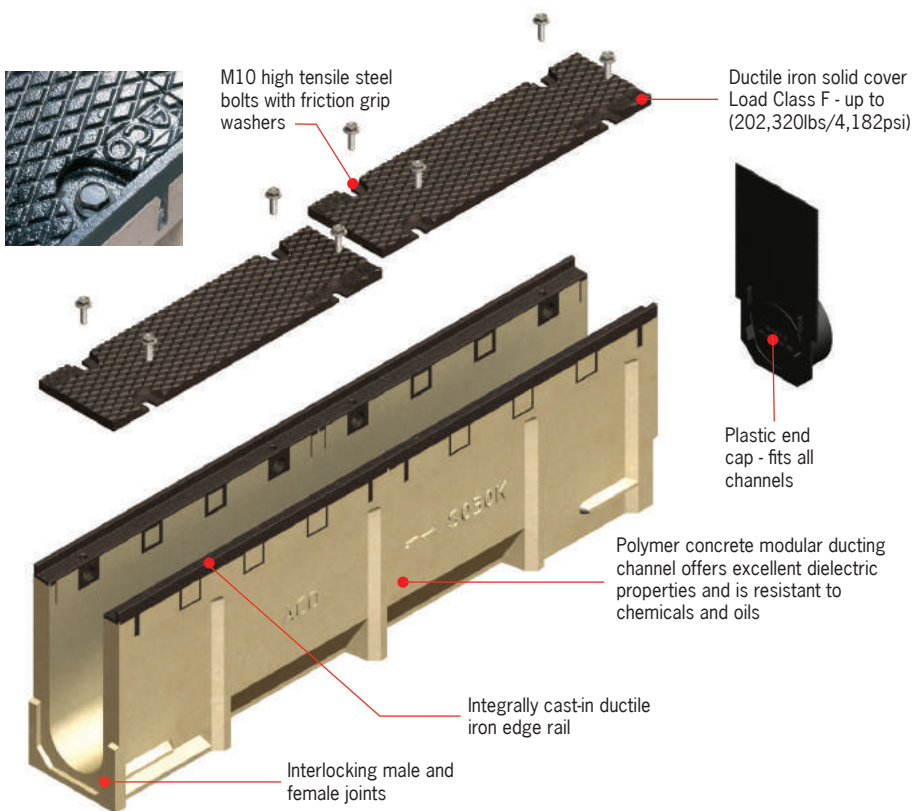
A duct allows continual access along a cable/pipe route via removable covers.

Polymer concrete is an ideal material for electrical ducts as it offers excellent insulation properties - electrical resistivity rating of 1x10<sup>8</sup> Ω/sq.

DS100 Ducting

Features

- 4" (100mm) internal width
- Choice of 3 neutral depths
- Excellent material dielectric properties
- Resistant to chemicals and oils
- Heavy duty system capable of withstanding up to Class F (202,320lbs/4,182psi) loading
- Continuous access when covers removed

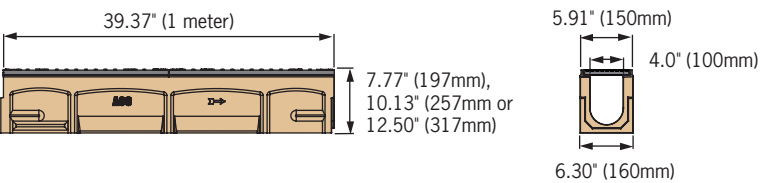


DS100 Ducting Parts List

Description	Part No.	Invert Depth inches (mm)	Length inches (mm)	Weight (lbs)	
				Total <sup>1</sup>	Cover <sup>2</sup>
DS010 duct with ductile iron covers	99266	6.77 (197)	39.37 (1000)	83.9	15.4
DS020 duct with ductile iron covers	99267	9.13 (257)	39.37 (1000)	99.9	15.4
DS030 duct with ductile iron covers	99268	11.50 (317)	39.37 (1000)	110.9	15.4
DS100 End cap	95063	-	-		0.4

Notes:

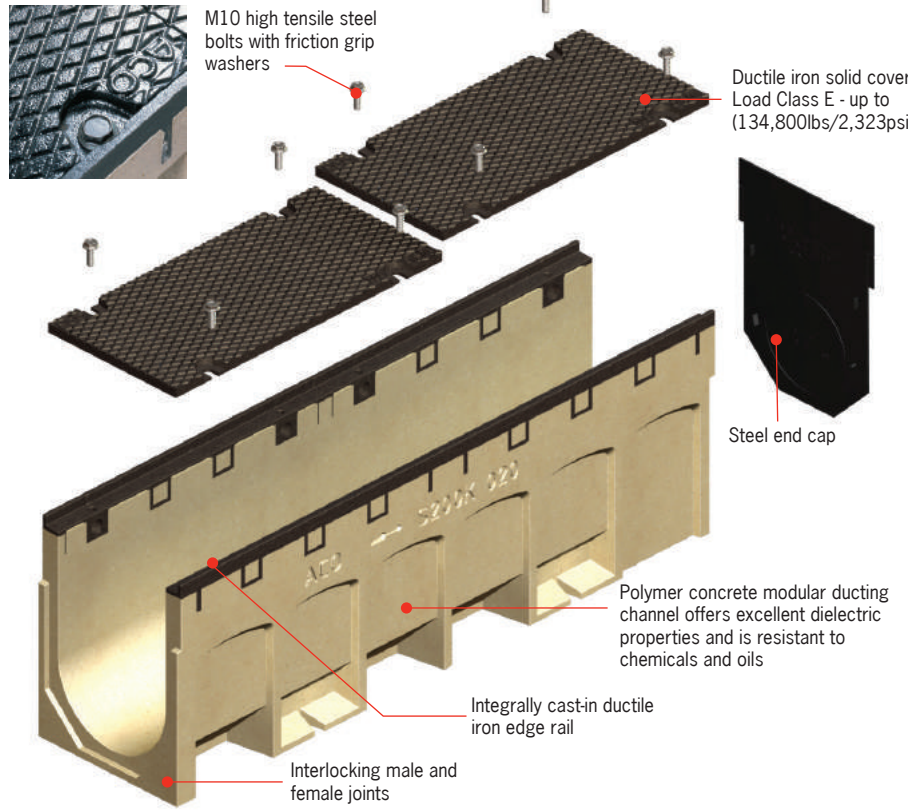
1. Units are sold complete (polymer concrete channel and 2 ductile iron covers) - total weight is complete unit.
2. Cover weights are provided as lifting weight information (individual covers only).



DS200 Ducting

Features

- 8" (200mm) internal width
- 1 neutral depth
- Excellent material dielectric properties
- Resistant to chemicals and oils
- Heavy duty system capable of withstanding up to Class E (134,800lbs/2,323psi) loading
- Continuous access when covers removed

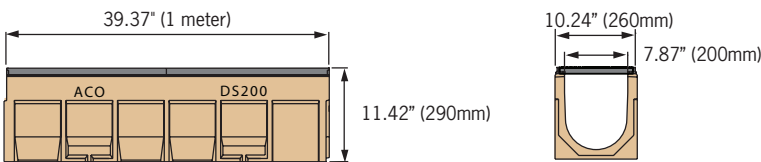


DS200 Ducting Parts List

Description	Part No.	Invert Depth inches (mm)	Length inches (mm)	Weight (lbs)	
				Total <sup>1</sup>	Cover <sup>2</sup>
DS2000 duct with ductile iron covers	76537	10.24 (290)	39.37 (1000)	180.0	33.0
DS200 Steel End cap	99256	-	-		3.26

Notes:

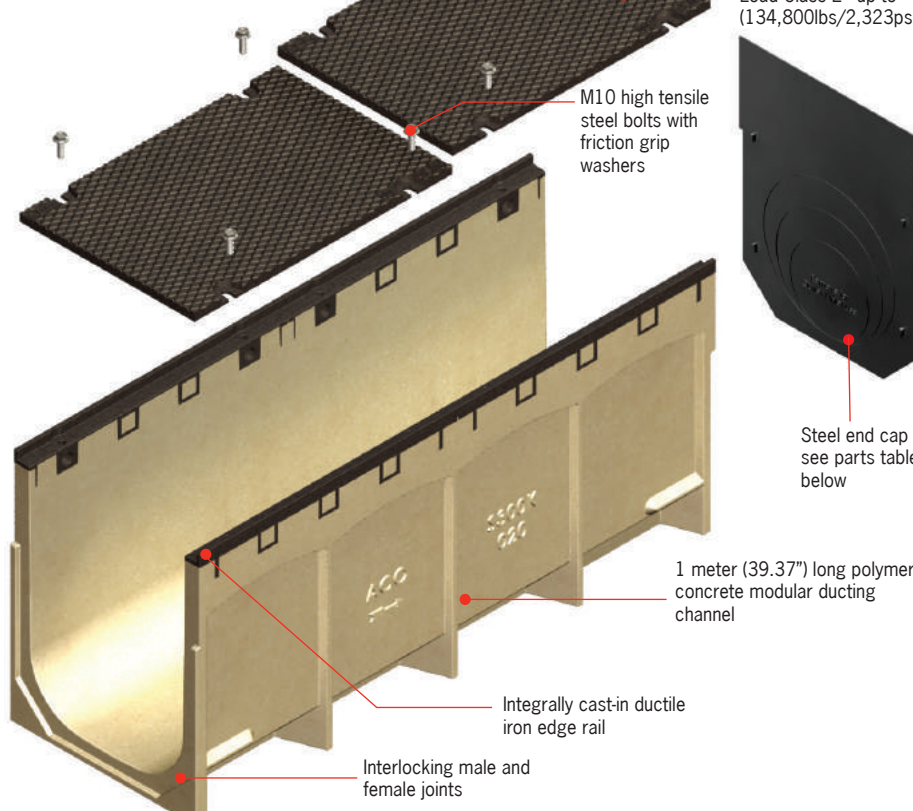
1. Units are sold complete (polymer concrete channel and 2 ductile iron covers) - total weight is complete unit.
2. Cover weights are provided as lifting weight information (individual covers only).



DS300 Ducting

Features

- 12" (300mm) internal width
- Choice of 4 neutral depths
- Excellent material dielectric properties
- Resistant to chemicals and oils
- Heavy duty system capable of withstanding up to Class E (134,800lbs/2,323psi) loading
- Continuous access when covers removed

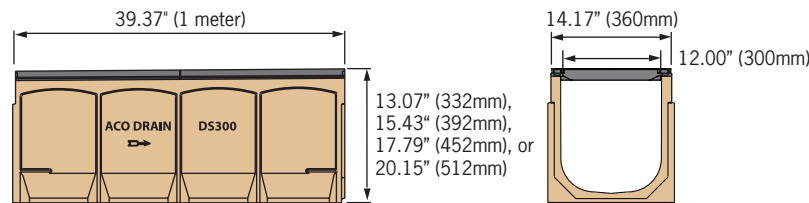


DS300 Ducting Parts List

Description	Part No.	Invert Depth inches (mm)	Length inches (mm)	Weight (lbs)	
				Total <sup>1</sup>	Cover <sup>2</sup>
DS300 01 duct with ductile iron covers	99258	11.89" (332)	39.37 (1000)	216.6	48.4
DS300 010 duct with ductile iron covers	99260	14.25" (392)	39.37 (1000)	229.6	48.4
DS300 020 duct with ductile iron covers	99261	16.61" (452)	39.37 (1000)	242.6	48.4
DS300 030 duct with ductile iron covers	99262	18.98" (512)	39.37 (1000)	254.6	48.4
DS300 01 Steel End cap	99257	-	-		5.45
DS300 010 Steel End cap	99263	-	-		6.57
DS300 020 Steel End cap	99264	-	-		7.69
DS300 030 Steel End cap	99265	-	-		8.82

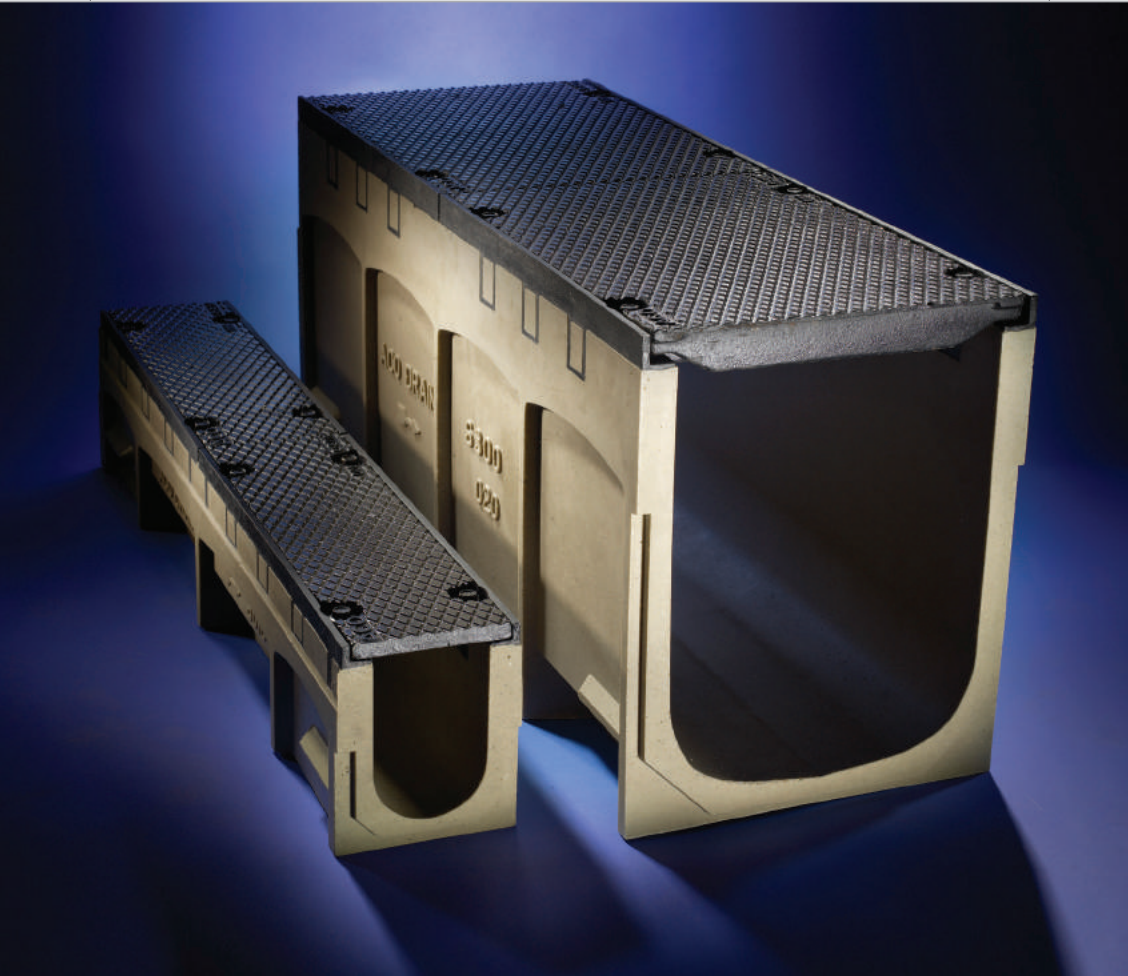
Notes:

1. Units are sold complete (polymer concrete channel and 2 ductile iron covers) - total weight is complete unit.
2. Cover weights are provided as lifting weight information (individual covers only).





Utility Management  
System

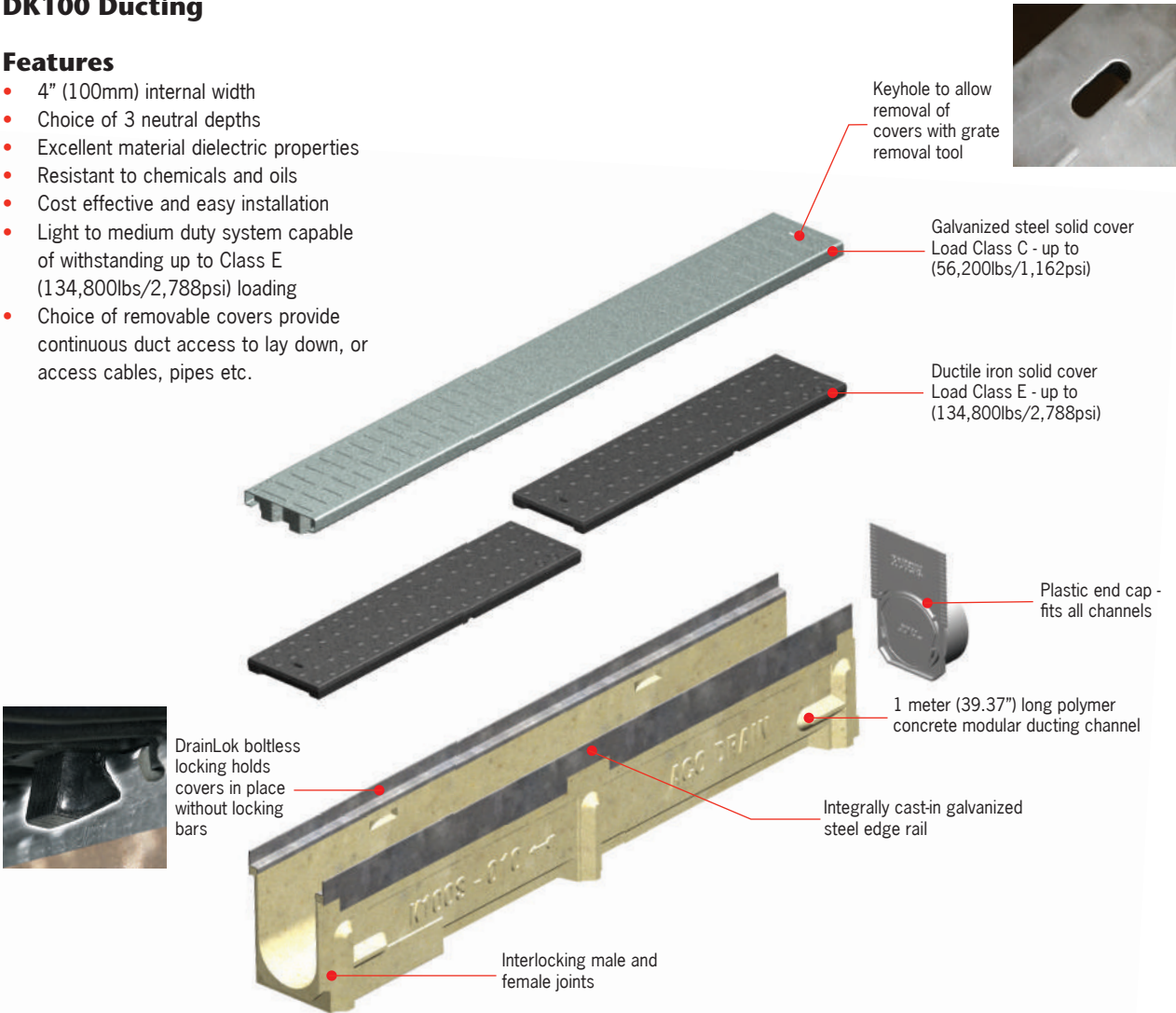


ACO UTILITYDUCT

DK100 Ducting

Features

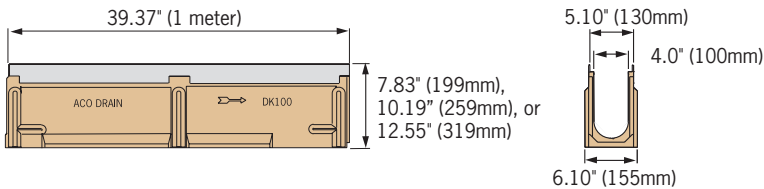
- 4" (100mm) internal width
- Choice of 3 neutral depths
- Excellent material dielectric properties
- Resistant to chemicals and oils
- Cost effective and easy installation
- Light to medium duty system capable of withstanding up to Class E (134,800lbs/2,788psi) loading
- Choice of removable covers provide continuous duct access to lay down, or access cables, pipes etc.



DK100 Ducting Parts List

Description	Part No.	Invert Depth inches (mm)	Length inches (mm)	Weight (lbs)
DK010 polymer concrete duct	99320	6.96 (199)	39.37 (1000)	36.8
DK020 polymer concrete duct	99321	9.33 (259)	39.37 (1000)	46.0
DK030 polymer concrete duct	99322	11.69 (319)	39.37 (1000)	55.8
DK100 End cap	96825	-	-	0.4
Cover Options				
Type 416 Galvanized steel solid cover	98947	-	39.37 (1000)	12.1
Type 456 Ductile iron solid cover	12672	-	19.69 (500)	11.75

Notes:  
1. Units are sold as channel and covers separately - add weights for total unit weight.



www.acousa.com

Other ACO products

External drainage

ACO Sport

Surface drainage and building accessories for track & field.

ACO Infrastructure

Surface drainage products engineered for highways, urban roads and bridges.

Aquaduct

Custom design and manufacture of fiberglass trench drain systems.

ACO Duct

Linear ducting system with removable solid covers.

ACO Environment

Oil water separators and spill containment systems.

ACO Wildlife

Tunnel and fence system to guide amphibians and other small creatures safely across roads.

ACO StormBrixx

A unique and patented plastic geocellular storm water management system.

ACO Self

Simple drainage and building components for use around the home, garden and office.

Building drainage

ACO Stainless

Stainless steel trench drains.

ACO Floor Drain

Stainless steel floor drains.

ACO BuildLine

Drainage products for thresholds, balconies, green roofs and building façades.

ACO Pipe

Stainless steel push-fit pipe system.

ACO, Inc.

West Sales Office

825 W. Beechcraft St.  
Casa Grande, AZ 85122  
Tel: (520) 421-9988  
Toll Free: (888) 490-9552  
Fax: (520) 421-9899

Northeast Sales Office

9470 Pinecone Drive  
Mentor, OH 44060  
Tel: (440) 639-7230  
Toll Free: (800) 543-4764  
Fax: (440) 639-7235

Southeast Sales Office

4211 Pleasant Road  
Fort Mill, SC 29708  
Toll Free: (800) 543-4764  
Fax: (803) 802-1063

Electronic Contact:

info@acousa.com  
www.acousa.com

© May 2018 ACO, Inc.

All reasonable care has been taken in compiling the information in this document. All recommendations and suggestions on the use of ACO products are made without guarantee since the conditions of use are beyond the control of the company. It is the customer's responsibility to ensure that each product is fit for its intended purpose and that the actual conditions of use are suitable. ACO, Inc. reserves the right to change products and specifications without notice.

Re-order Part # DT001 v1.0



ACO UTILITYDUCT

Ducting System for Surface Level Utilities

Modular ducting channels with solid covers

