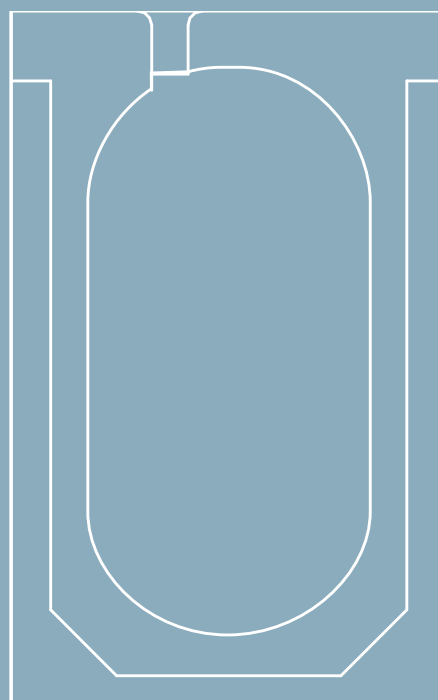




Surface Water Management



2021

Product Price List

ACO Sport

Effective June 1, 2021

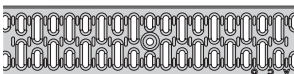
Type 4010 Constant Depth Channel - 39.37" (1 m)



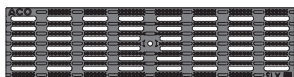
System 4000 Parts

	Part No.	Price \$	Weight lbs	Pallet Qty
Type 4002 Constant Depth Channel - 39.37" (1 m)	06562	45.25	32.9	28
Type 4000-1 Sloped Channel - 39.37" (1 m)	138001	64.50	32.0	28
Type 4000-2 Sloped Channel - 39.37" (1 m)	138002	64.50	32.9	28
Type 4000-3 Sloped Channel - 39.37" (1 m)	138003	64.50	33.8	28
Type 4000-4 Sloped Channel - 39.37" (1 m)	138004	64.50	34.7	28
Type 4000-5 Sloped Channel - 39.37" (1 m)	138005	64.50	35.6	28
Type 4000-6 Sloped Channel - 39.37" (1 m)	138006	64.50	36.5	28
Type 4000-7 Sloped Channel - 39.37" (1 m)	138007	64.50	37.4	28
Type 4000-8 Sloped Channel - 39.37" (1 m)	138008	64.50	38.3	28
Type 4000-9 Sloped Channel - 39.37" (1 m)	138009	64.50	39.2	28
Type 4010 Constant Depth Channel - 39.37" (1 m)	06561	51.75	40.1	28
Type 4000-0103 Constant Depth Channel - 19.69" (0.5 m) ¹	138033	34.50	23.0	56
Type 4000-10 Sloped Channel - 39.37" (1 m)	138010	64.50	40.1	28
Type 4000-11 Sloped Channel - 39.37" (1 m)	138011	64.50	41.0	28
Type 4000-12 Sloped Channel - 39.37" (1 m)	138012	64.50	41.9	28
Type 4000-13 Sloped Channel - 39.37" (1 m)	138013	64.50	42.8	28
Type 4000-14 Sloped Channel - 39.37" (1 m)	138014	64.50	43.7	28
Type 4000-15 Sloped Channel - 39.37" (1 m)	138015	64.50	44.6	28
Type 4000-16 Sloped Channel - 39.37" (1 m)	138016	64.50	45.5	28
Type 4000-17 Sloped Channel - 39.37" (1 m)	138017	64.50	46.4	28
Type 4000-18 Sloped Channel - 39.37" (1 m)	138018	64.50	47.3	28
Type 4000-19 Sloped Channel - 39.37" (1 m)	138019	64.50	48.2	28
Type 4020 Constant Depth Channel - 39.37" (1 m)	06563	64.50	49.1	28
Type 4000-0203 Constant Depth Channel - 19.69" (0.5 m) ¹	138035	34.50	26.0	56
Type 4000-20 Sloped Channel - 39.37" (1 m)	138020	64.50	49.1	28
Type 4000-21 Sloped Channel - 39.37" (1 m)	138021	64.50	50.0	28
Type 4000-22 Sloped Channel - 39.37" (1 m)	138022	64.50	50.9	28
Type 4000-23 Sloped Channel - 39.37" (1 m)	138023	64.50	51.8	28
Type 4000-24 Sloped Channel - 39.37" (1 m)	138024	64.50	52.7	28
Type 4000-25 Sloped Channel - 39.37" (1 m)	138025	64.50	53.6	28
Type 4000-26 Sloped Channel - 39.37" (1 m)	138026	64.50	54.5	28
Type 4000-27 Sloped Channel - 39.37" (1 m)	138027	64.50	55.6	28
Type 4000-28 Sloped Channel - 39.37" (1 m)	138028	64.50	56.5	28
Type 4000-29 Sloped Channel - 39.37" (1 m)	138029	64.50	57.4	28
Type 4030 Constant Depth Channel - 39.37" (1 m)	138036	64.50	58.0	28
Type 4000-0303 Constant Depth Channel - 19.69" (0.5 m) ¹	138037	34.50	31.0	56
Type 4000-30 Sloped Channel - 39.37" (1 m)	138030	64.50	59.2	28
Closing End Cap	137090	10.75	4.5	-
108-4 4" Outlet Cap	137092	16.25	2.0	-
208-4 4" Outlet Cap	137094	16.25	2.6	-
208-6 6" Outlet Cap	137095	37.75	2.6	-
308-4 4" Outlet Cap	137097	16.25	3.3	-
308-6 6" Outlet Cap	137098	37.75	3.3	-
104-4 Inlet Cap with 4" SCH 40 pipe	137091	26.00	2.6	-
204-4 Inlet Cap with 4" SCH 40 pipe	137093	26.00	3.7	-
204-6 Inlet End Cap with 6" SCH 35 pipe	137099	53.75	3.3	-
In-Line Catch Basin - 19.69" (0.5 m)	05620	96.75	62.0	12
Plastic Catch Basin Trash Bucket	01498	34.50	1.1	-
Installation Device - 4" System	97477	16.25	2.8	-
Removable QuickLok® Bar for Catch Basin	98717	20.50	0.3	-
ACO Seal Polymer Concrete Sealant (10 oz tube)	91120	10.75	1.0	-
SAFETY EDGE CHANNELS & CATCH BASIN				
Type SE4020 Constant Depth Channel - 39.37" (1 m)*	06566	72.25	49.1	28
SE In-Line Catch Basin - 19.69" (0.5 m)*	06567	107.25	62.0	12
QUICKLOK® GRATES & ACCESSORIES				
Galvanized Slotted Grate - 39.37" (1 m) ²	31530	30.00	5.9	200
Galvanized Slotted Grate - 19.69" (0.5 m) ²	31531	15.00	3.0	100
Black Plastic Longitudinal Grate - 19.69" (0.5 m) ^{2,3}	97393	15.00	1.8	400
Gray Plastic Longitudinal Grate - 19.69" (0.5 m) ^{2,3}	97385	15.00	1.8	400
QuickLok® Locking Bar	02899	5.50	0.1	-
QuickLok® Grate Removal Tool	01318	16.25	0.3	-

Galvanized Slotted Grate



Black Plastic Longitudinal Grate

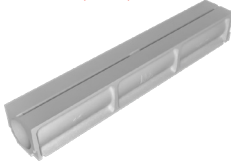


1. Bottom knockouts on 0.5 m channels only.
 2. Load Class A: 3,372 lbs - 116 psi; EN 1433 : 2002 Drainage channels for vehicular and pedestrian areas
 3. ADA compliant: The Americans with Disabilities Act of 2010, Section 302.3: Where grates are used within walking surfaces, the open slots should be no greater than 0.5" (12.7 mm) wide in one direction. Where the length of the slot is greater than 0.5", the opening should run perpendicular to the main direction of traffic.
 * These special products are made to order with variable lead time. Please contact ACO for product-specific information.

Straight Channel -
39.37" (1 m)



Straight Channel -
39.37" (1 m)



Straight 2.0" Wide
(Black Rubber)



System 2000 Parts

	Part No.	Price \$	Weight lbs	Pallet Qty
Straight Channel - 39.37" (1 m)	00784	91.50	66.0	28
Radius Channel - 39.37" (1 m)	00786	91.50	66.0	28
In-Line Catch Basin - 19.69" (0.5 m)	05620	96.75	62.0	12
Polymer Concrete Catch Basin Cover	00788	23.75	9.0	-
Plastic Catch Basin Trash Bucket	01498	34.50	1.1	-
Dia. 6" Outlet Pipe Oval Adapter for Catch Basin	95140	18.50	1.1	-
Installation Device - 4" System	97477	16.25	2.8	-
ACO Seal Polymer Concrete Sealant (10 oz tube)	91120	10.75	1.0	-

System 3000 Parts

	Part No.	Price \$	Weight lbs	Pallet Qty
Straight Channel - 39.37" (1 m)	05657	61.50	43.0	42
Radius Channel - 39.37" (1 m)	05658	61.50	43.0	42
In-Line Catch Basin - 21.75" (0.552 m)	05625	94.75	62.0	12
Polymer Concrete Catch Basin Cover	05661	23.75	9.0	-
Plastic Catch Basin Trash Bucket	01498	34.50	1.1	-
Installation device - 4" System	97477	16.25	2.8	-
ACO Seal Polymer Concrete Sealant (10 oz tube)	91120	10.75	1.0	-

System 7100 Parts

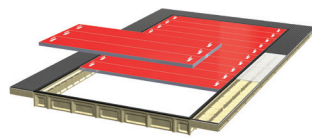
	Part No.	Price \$	Weight lbs	Pallet Qty
Straight 2.0" Wide (black rubber)	00960	62.50	31.8	48
Corner 2.0" Wide (black rubber)	01041	62.50	17.0	-

System 7200 Sand Trap

	Part No.	Price \$	Length in (mm)	Overall Depth in (mm)	Weight lbs	Pallet Qty
Sand Trap	02739	88.00	39.37 (1000)	5.7 (145)	72.8	-
Metal Grate & Rubber Mat	01453	220.00	39.37 (1000)	1.9 (48)	32.0	-
End Cap	02740	36.00	19.69 (500)	6.8 (200)	12.0	-

System 7100 Safety Curb

	Part No.	Price \$	Length in (mm)	Overall Depth in (mm)	Weight lbs	Pallet Qty
Straight Safety Curb	00960	62.50	39.37 (1000)	9.80 (249)	31.8	48
Safety Curb Corner Piece	01041	62.50	11.8 (300)	9.80 (249)	17.0	-



System 7310 High School Jump Pits

	Part No.	Price \$	Internal Size (m x m)	Weight lbs	Pallet Qty
OPTION A: FLUSH END					
Jump Pit System (curbs, sand traps & covers) Flush End - Black	91021	18,150.00	3 x 6.5	3,998.0	-
OPTION B: WRAP-AROUND					
Jump Pit System (curbs, sand traps & covers) Wrap-Around - Black	91008	18,600.00	3 x 6.5	4,318.0	-
OPTION C: CURB & COVER					
Jump Pit System (curbs, & covers) - Black	91023	12,400.00	3 x 6.5	2,215.0	-

System 7320 College (NCAA) Jump Pits

	Part No.	Price \$	Internal Size (m x m)	Weight lbs	Pallet Qty
OPTION A: FLUSH END					
Jump Pit System (curbs, sand traps & covers) Flush End - Black	91032	20,400.00	3 x 7.5	4,433.0	-
OPTION B: WRAP-AROUND					
Jump Pit System (curbs, sand traps & covers) Wrap-Around - Black	91045	20,900.00	3 x 7.5	4,791.0	-
OPTION C: CURB & COVER					
Jump Pit System (curbs, & covers) - Black	91027	14,100.00	3 x 7.5	2,475.0	-

System 7330 International (IAAF) Jump Pits	Part No.	Price \$	Internal Size (m x m)	Weight lbs	Pallet Qty
OPTION A: FLUSH END					
Jump Pit System (curbs, sand traps & covers) Flush End - Black	91017	22,750.00	3 x 8.5	4,906.0	-
OPTION B: WRAP-AROUND					
Jump Pit System (curbs, sand traps & covers) Wrap-Around - Black	91028	23,200.00	3 x 8.5	5,264.0	-
OPTION C: CURB & COVER					
Jump Pit System (curbs, & covers) - Black	91036	15,700.00	3 x 8.5	2,735.0	-

System 7300 Accessories	Part No.	Price \$	Internal Size (m x m)	Weight lbs	Pallet Qty
Jump Pit System Assembly Kit	91046	425.00	-	48.5	-

Complete Systems	Price \$/ft	Price \$/m
SYSTEM 4000 COMPLETE SYSTEM		
4002 Channel with Grate	26.30	86.25
4010 Channel with Grate	28.28	92.75
4020 Channel with Grate	32.17	105.50
4000 Sloping Channel with Grate	32.17	105.50
SE4020 Channel with Grate	34.53	113.25
SYSTEM 2000 COMPLETE SYSTEM		
Straight Channel - 39.37" (1 m)	27.90	91.50
SYSTEM 3000 COMPLETE SYSTEM		
Straight Channel - 39.37" (1 m)	18.75	61.50
SYSTEM 7100 COMPLETE SYSTEM		
2.0" Wide	19.06	62.50

ACO Terms & Conditions

PAYMENT - All pricing is in U.S. Dollars.

TERMS - Net 30 days from date of invoice. A service charge of 1.5% per month will be charged on all invoices unpaid 30 days after invoice date (equal to 18% annually).

FREIGHT - F.O.B. ACO

PRODUCT AVAILABILITY - Call Customer Service for current stock availability and lead times.

MISSING MATERIAL - Missing material must be reported to ACO's Customer Service Department within 48 hours of receipt of shipment.

DAMAGED MATERIAL - Damaged material must be noted on the bill of lading at final destination point. The receiver must file a freight claim with the carrier. ACO is not responsible for material damaged in transit.

TAXES - All State and Federal taxes are additional.

CHANGES - ACO, Inc. reserves the right to change prices, design, and materials of any products listed at any time.

RETURNS - Returned materials are subject to a 25% restocking charge. Prior return authorization (RGA) must be obtained from ACO before any material is shipped. Returned materials are subject to the following conditions:

- Items returned in a condition that does not allow for refurbish and resale will not be credited.
- Material must be returned to ACO within 30 days of receipt of RGA.
- All freight costs are the responsibility of those returning the material.
- All non-standard and fabricated material cannot be returned for credit.



Full ACO, Inc. Terms and Conditions of Sale

ACO, Inc.

West Sales Office
825 W. Beechcraft Street
Casa Grande, AZ 85122
Tel: (520) 421-9988
Toll-Free: (888) 490-9552
Fax: (520) 421-9899

Northeast Sales Office
9470 Pinecone Drive
Mentor, OH 44060
Tel: (440) 639-7230
Toll-Free: (800) 543-4764
Fax: (440) 639-7235

Southeast Sales Office
4211 Pleasant Road
Fort Mill, SC 29708
Toll-Free: (800) 543-4764
Fax: (803) 802-1063

info@acousa.com
www.acousa.com

© April 2021 ACO, Inc.

All reasonable care has been taken in compiling the information in this document. All recommendations and suggestions on the use of ACO products are made without guarantee since the conditions of use are beyond the control of the company. It is the customer's responsibility to ensure that each product is fit for its intended purpose and that the actual conditions of use are suitable. ACO, Inc. reserves the right to change products and specifications without notice.

Print #SP800 V.3

ACO. creating
the future of drainage

