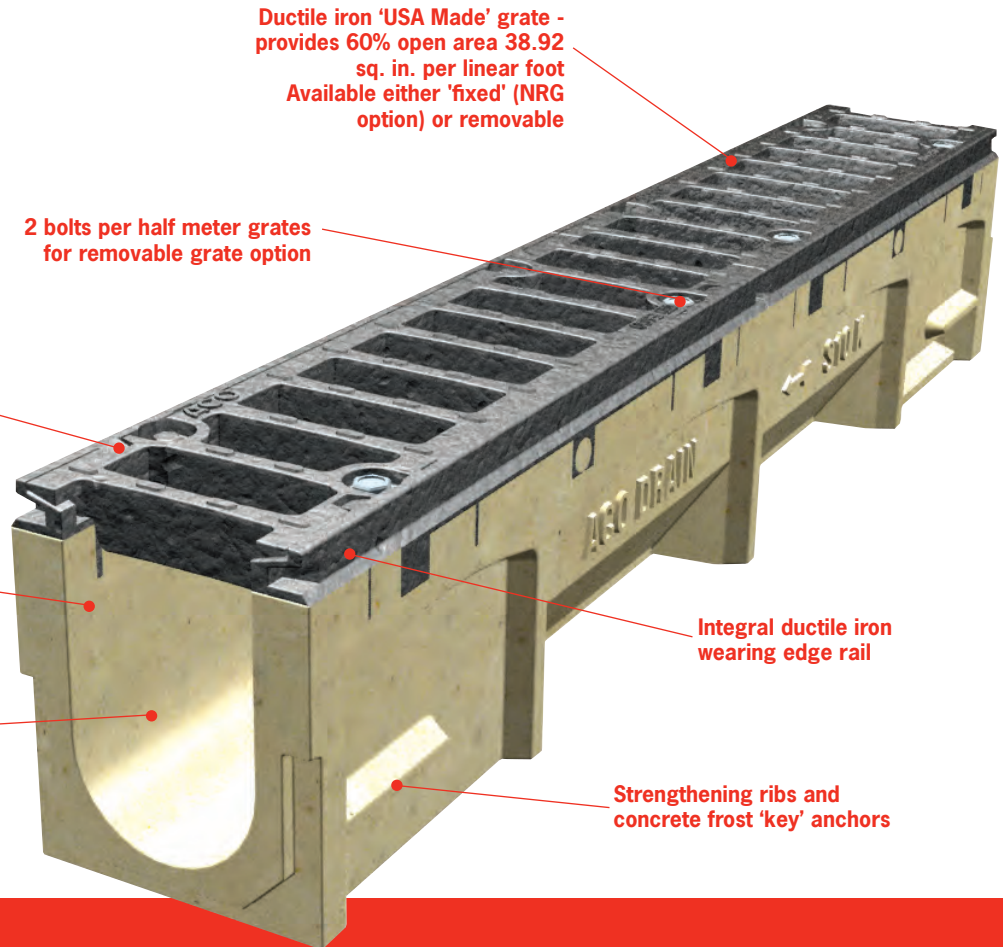


**Typical Applications**

- *Urban areas*
- *Highways*
- *Interstates*
- *State roads*



TraffikDrain combines the benefits of a standard grated trench drain with a high capacity intake grate and high volume pipe connections. This ensures maximum water intake through the grate and helps drain road surfaces as quickly as possible, minimizing ponding and the subsequent danger this creates for road users.

Sloping units offer up to 196.8ft of continuous slope with out the need for sidewalls, enabling excellent hydraulics and long runs between outlets.

Compact size and shallow excavation reduces disruption to traffic (vehicular or pedestrian) and buried utilities, during installation.

The system is available with either a 'fixed' grate or removable option.



**Grated 4" trench drain with high capacity intake grates and high capacity pipe connections.**

## Grates and Grate Security



Grates are 'Made in USA' and manufactured from ductile iron. They are tested to load class E600 as defined by EN 1433 and are able to withstand 2,788psi.

Grates provide a 60% open area - 38.92 sq. in. per linear foot.

### Removable Grate Option



An integrally cast-in rail provides maximum strength and protection for channel body. Shock absorbing widgets, with M10 stainless steel nuts, are fitted in rail to provide threaded lock-down for grate bolts. Two bolts per half meter are required to lock grate to the channel.



'Anti-shunt' lugs cast into the edge rail fit to recesses in grate to prevent longitudinal movement. Lugs also prevent grates from lifting, which, when combined with the two M10 locking bolts, provides four points of capture per grate.

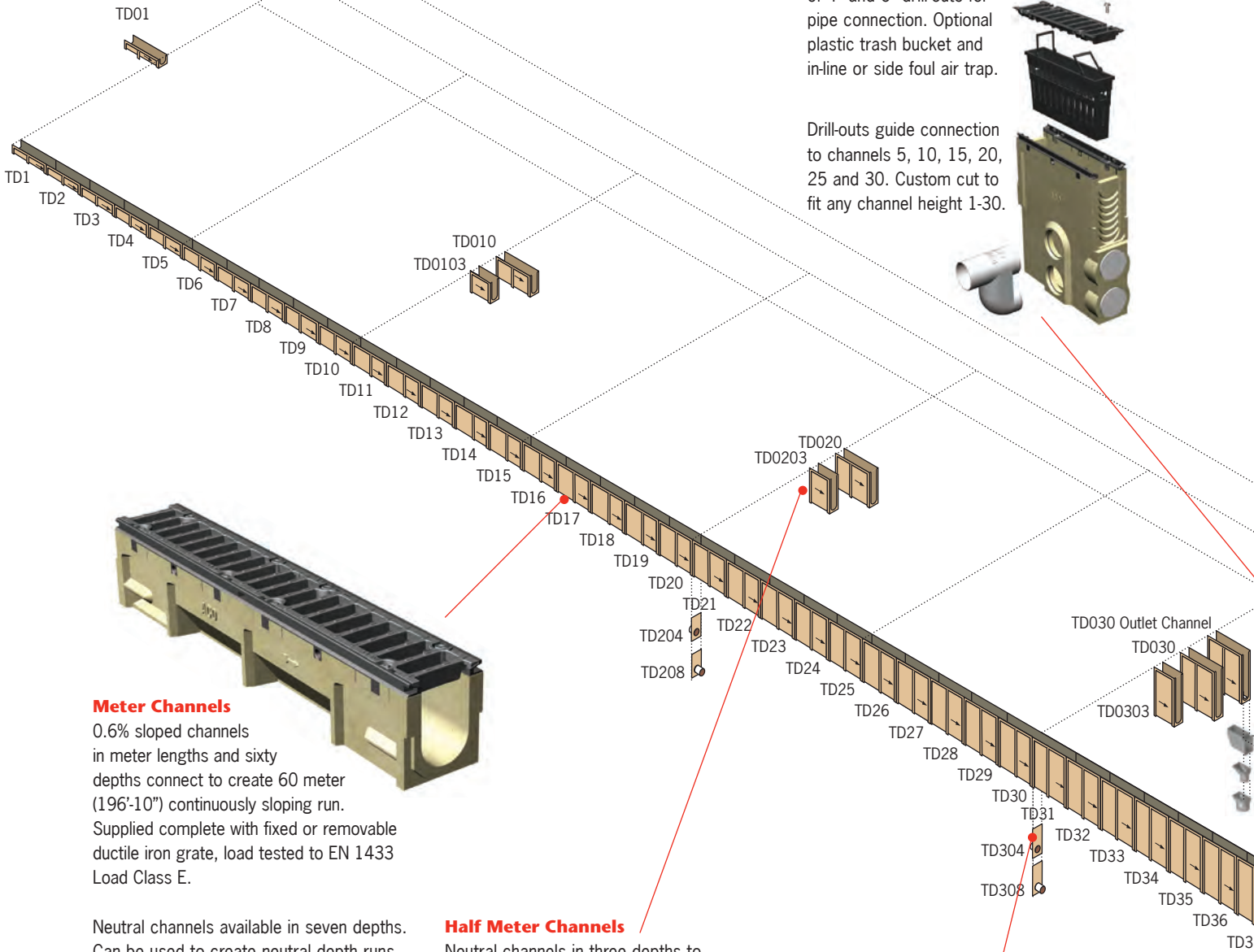
### Non-Removable Grate Option



For applications requiring a grate that is 'permanently' integrated into the channel body, TraffikDrain can be supplied, in all sizes, with grates that are permanently fixed during manufacture. Each grate is held by 2 sprung steel pins inserted horizontally through the ductile iron frame cast into the body and through the side wall of the grate.

If at a later date the grate needs to be removed the pins can be cut with an appropriate metal cutting saw. Grates can be removed and reinstated as bolted grates if required.

# TraffikDrain - System Layout



## In-line Catch Basin

Supplied with grate. Choice of 4" and 6" drill-outs for pipe connection. Optional plastic trash bucket and in-line or side foul air trap.

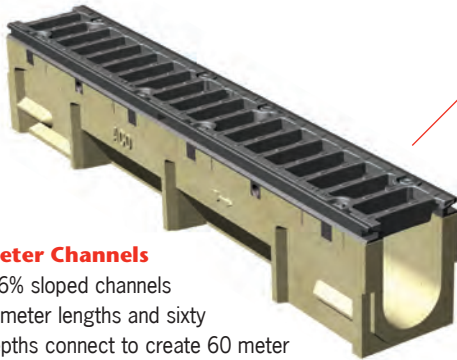
Drill-outs guide connection to channels 5, 10, 15, 20, 25 and 30. Custom cut to fit any channel height 1-30.



## Meter Channels

0.6% sloped channels in meter lengths and sixty depths connect to create 60 meter (196'-10") continuously sloping run. Supplied complete with fixed or removable ductile iron grate, load tested to EN 1433 Load Class E.

Neutral channels available in seven depths. Can be used to create neutral depth runs, or inserted into sloping runs to extend overall length.



## Half Meter Channels

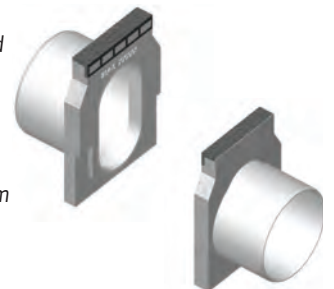
Neutral channels in three depths to supplement meter channels. Supplied complete with grate. Side profiling enables junctions or tees to be created.



## 6" Inlet/Outlet Caps

6" Schedule 40 spigot pipe, polypropylene oval to round adapter cast into polymer concrete end cap, available in two heights to fit TD20 and TD30 channels only. Solvent weld to coupler.

Note: These end caps cannot be cut to height, and fit only at positions shown in layout diagram TD30 channels).



**600 Series Catch Basin**

Supplied complete with 4-bolt ductile iron grate. Choice of 4", 6" and 8" drill-outs for pipe connection. Choice of deep or short base to suit site inverts and hydraulic requirements. Available with optional plastic trash bucket.



Drill-outs guide connection to channels 5, 10, 15, 20, 25 and 30. Custom cut end wall to fit any channel height 1-30.

**Closing/4" Inlet/Outlet Cap**

Manufactured from black ABS to complement edge rail. Guides aid cutting to correct height. 4" bell end connection to Schedule 40 pipe. Seal using PVC-ABS cement.



*Note: Only fits 1-30 channels; for depth 1-10 channels ACO recommends removal of bell end to ensure adequate pavement material coverage.*

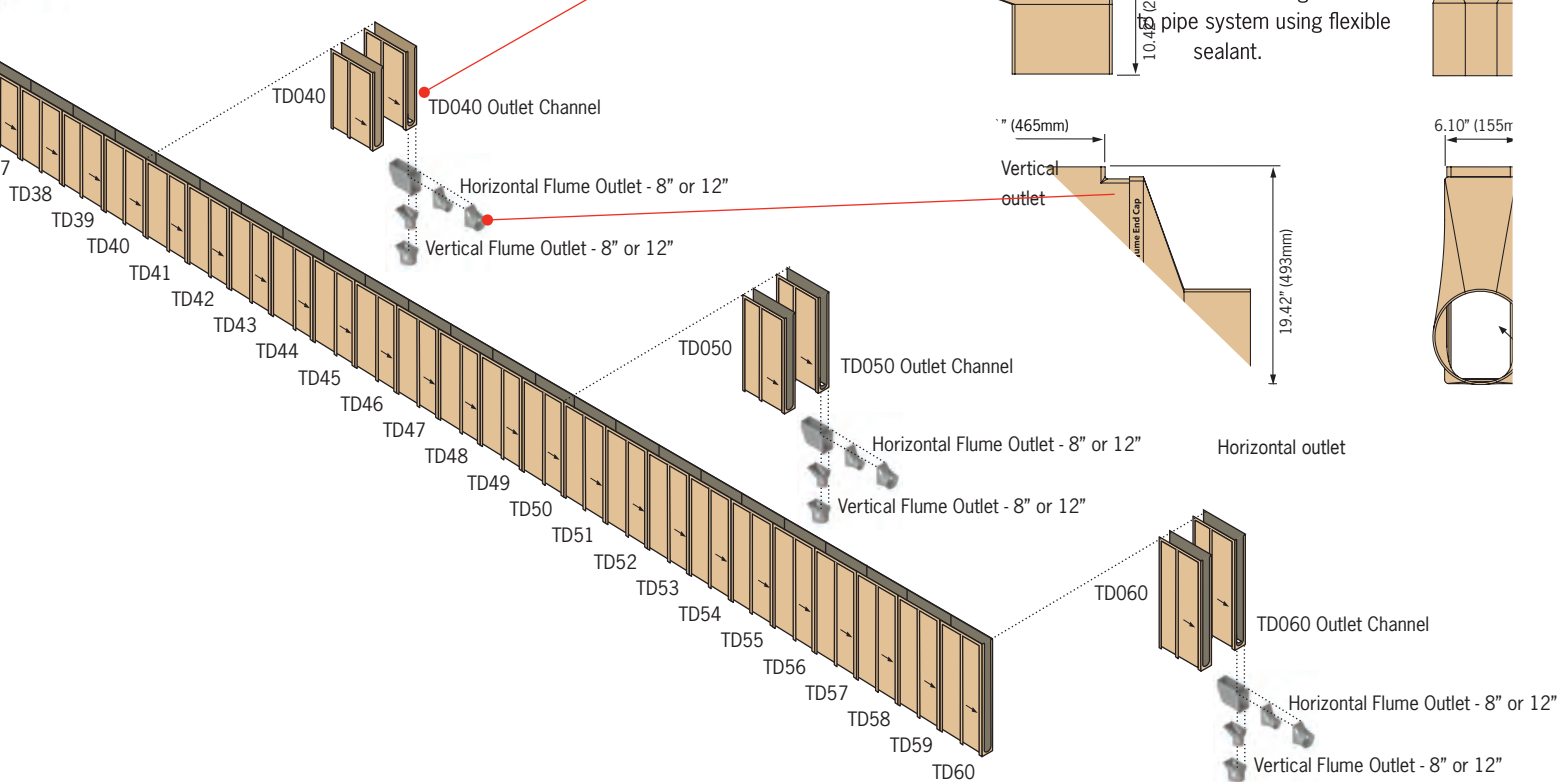
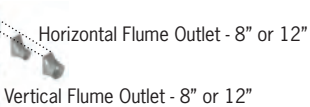
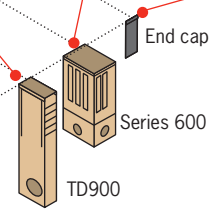
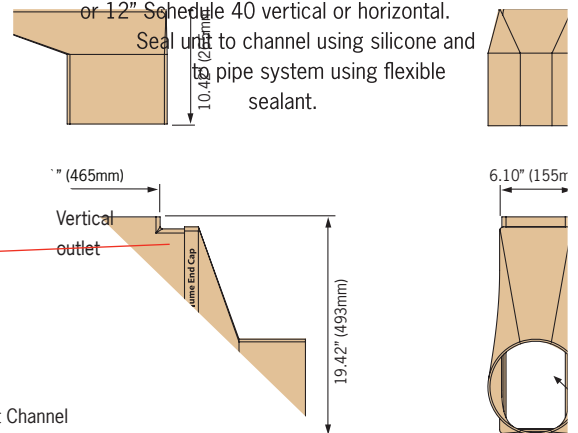
**Outlet Channel**

A neutral depth, meter long channel with open base for the deepest half meter. Fits after TD30, TD40, TD50 and TD60 channels only. Used with the flume outlets to provide high capacity output from the system (900 to 2,809 GPM).



**Flume Outlets**

Large high capacity polypropylene outlet for connection into a collector line or catch basin. Fits to base of outlet channels. Available as 8" or 12" Schedule 40 vertical or horizontal. Seal unit to channel using silicone and pipe system using flexible sealant.



# TrafficDrain - Parts Table

Description	Part No		Length		Invert Depth - female		Invert Depth - male		Weight
	Grated	NRG <sup>2</sup>	inches	mm	inches	mm	inches	mm	lbs
<b>TD01 Neutral channel</b>	<b>96105</b>	<b>05400</b>	<b>39.37</b>	<b>1000</b>	<b>4.41</b>	<b>112</b>	<b>4.41</b>	<b>112</b>	<b>62.7</b>
TD1 Sloping channel	96111	05401	39.37	1000	4.41	112	4.65	118	63.8
TD2 Sloping channel	96128	05402	39.37	1000	4.65	118	4.88	124	64.8
TD3 Sloping channel	96134	05403	39.37	1000	4.88	124	5.12	130	65.8
TD4 Sloping channel	96140	05404	39.37	1000	5.12	130	5.35	136	66.8
TD5 Sloping channel	96153	05405	39.37	1000	5.35	136	5.59	142	67.8
TD6 Sloping channel	96162	05406	39.37	1000	5.59	142	5.83	148	68.9
TD7 Sloping channel	96176	05407	39.37	1000	5.83	148	6.06	154	69.9
TD8 Sloping channel	96189	05408	39.37	1000	6.06	154	6.30	160	70.9
TD9 Sloping channel	96191	05409	39.37	1000	6.30	160	6.54	166	71.9
TD10 Sloping channel	96206	05410	39.37	1000	6.54	166	6.77	172	72.9
<b>TD010 Neutral channel</b>	<b>96218</b>	<b>05432</b>	<b>39.37</b>	<b>1000</b>	<b>6.77</b>	<b>172</b>	<b>6.77</b>	<b>172</b>	<b>73.4</b>
<b>TD0103 Neutral channel</b>	<b>96221</b>	<b>05435</b>	<b>19.69</b>	<b>500</b>	<b>6.77</b>	<b>172</b>	<b>6.77</b>	<b>172</b>	<b>38.4</b>
TD11 Sloping channel	96234	05411	39.37	1000	6.77	172	7.01	178	73.9
TD12 Sloping channel	96245	05412	39.37	1000	7.01	178	7.24	184	74.9
TD13 Sloping channel	96252	05413	39.37	1000	7.24	184	7.48	190	75.9
TD14 Sloping channel	96269	05414	39.37	1000	7.48	190	7.72	196	76.9
TD15 Sloping channel	96277	05415	39.37	1000	7.72	196	7.95	202	77.9
TD16 Sloping channel	96283	05416	39.37	1000	7.95	202	8.19	208	79.0
TD17 Sloping channel	96295	05417	39.37	1000	8.19	208	8.43	214	80.0
TD18 Sloping channel	96301	05418	39.37	1000	8.43	214	8.66	220	81.0
TD19 Sloping channel	96316	05419	39.37	1000	8.66	220	8.90	226	82.0
TD20 Sloping channel	96329	05420	39.37	1000	8.90	226	9.13	232	83.0
<b>TD020 Neutral channel</b>	<b>96337</b>	<b>05433</b>	<b>39.37</b>	<b>1000</b>	<b>9.13</b>	<b>232</b>	<b>9.13</b>	<b>232</b>	<b>83.6</b>
<b>TD0203 Neutral channel</b>	<b>96342</b>	<b>05436</b>	<b>19.69</b>	<b>500</b>	<b>9.13</b>	<b>232</b>	<b>9.13</b>	<b>232</b>	<b>42.2</b>
TD21 Sloping channel	96351	05421	39.37	1000	9.13	232	9.37	238	84.0
TD22 Sloping channel	96364	05422	39.37	1000	9.37	238	9.61	244	85.0
TD23 Sloping channel	96376	05423	39.37	1000	9.61	244	9.84	250	86.0
TD24 Sloping channel	96385	05424	39.37	1000	9.84	250	10.08	256	87.0
TD25 Sloping channel	96398	05425	39.37	1000	10.08	256	10.31	262	88.0
TD26 Sloping channel	96403	05426	39.37	1000	10.31	262	10.55	268	89.1
TD27 Sloping channel	96411	05427	39.37	1000	10.55	268	10.79	274	90.1
TD28 Sloping channel	96429	05428	39.37	1000	10.79	274	11.02	280	91.1
TD29 Sloping channel	96434	05429	39.37	1000	11.02	280	11.26	286	92.1
TD30 Sloping channel	96447	05430	39.37	1000	11.26	286	11.50	292	93.1
<b>TD030 Neutral channel</b>	<b>96456</b>	<b>05434</b>	<b>39.37</b>	<b>1000</b>	<b>11.50</b>	<b>292</b>	<b>11.50</b>	<b>292</b>	<b>95.4</b>
<b>TD0303 Neutral channel</b>	<b>96462</b>	<b>05437</b>	<b>19.69</b>	<b>500</b>	<b>11.50</b>	<b>292</b>	<b>11.50</b>	<b>292</b>	<b>46.4</b>
<b>TD030 Outlet channel</b>	<b>96448</b>	<b>05375</b>	<b>39.37</b>	<b>1000</b>	<b>11.50</b>	<b>292</b>	<b>11.50</b>	<b>292</b>	<b>90.0</b>
TD31 Sloping channel	96253	05481	39.37	1000	11.50	292	11.73	298	98.4
TD32 Sloping channel	96257	05482	39.37	1000	11.73	298	11.97	304	101.0
TD33 Sloping channel	96259	05483	39.37	1000	11.97	304	12.20	310	103.6
TD34 Sloping channel	96262	05484	39.37	1000	12.20	310	12.44	316	106.2
TD35 Sloping channel	96265	05487	39.37	1000	12.44	316	12.68	322	106.4
TD36 Sloping channel	96268	05488	39.37	1000	12.68	322	12.91	328	107.5
TD37 Sloping channel	96271	05489	39.37	1000	12.91	328	13.15	334	109.2
TD38 Sloping channel	96275	05490	39.37	1000	13.15	334	13.39	340	111.0
TD39 Sloping channel	96278	05491	39.37	1000	13.39	340	13.62	346	112.8
TD40 Sloping channel	96286	05492	39.37	1000	13.62	346	13.86	352	114.9
<b>TD40 Neutral channel</b>	<b>96390</b>	<b>05372</b>	<b>39.37</b>	<b>1000</b>	<b>13.86</b>	<b>352</b>	<b>13.86</b>	<b>352</b>	<b>114.4</b>
<b>TD40 Outlet channel</b>	<b>96454</b>	<b>05376</b>	<b>39.37</b>	<b>1000</b>	<b>13.86</b>	<b>352</b>	<b>13.86</b>	<b>352</b>	<b>114.4</b>
TD41 Sloping channel	96290	05380	39.37	1000	13.86	352	14.09	358	117.4
TD42 Sloping channel	96297	05381	39.37	1000	14.09	358	14.33	364	118.8
TD43 Sloping channel	96305	05382	39.37	1000	14.33	364	14.57	370	120.2
TD44 Sloping channel	96308	05383	39.37	1000	14.57	370	14.80	376	121.6
TD45 Sloping channel	96313	05384	39.37	1000	14.80	376	15.04	382	122.9
TD46 Sloping channel	96319	05385	39.37	1000	15.04	382	15.28	388	125.4
TD47 Sloping channel	96326	05386	39.37	1000	15.28	388	15.51	394	127.0
TD48 Sloping channel	96331	05387	39.37	1000	15.51	394	15.75	400	128.6
TD49 Sloping channel	96338	05388	39.37	1000	15.75	400	15.98	406	130.2
TD50 Sloping channel	96340	05389	39.37	1000	15.98	406	16.22	412	131.9
<b>TD50 Neutral channel</b>	<b>96395</b>	<b>05373</b>	<b>39.37</b>	<b>1000</b>	<b>16.22</b>	<b>412</b>	<b>16.22</b>	<b>412</b>	<b>131.4</b>
<b>TD50 Outlet channel</b>	<b>96453</b>	<b>05377</b>	<b>39.37</b>	<b>1000</b>	<b>16.22</b>	<b>412</b>	<b>16.22</b>	<b>412</b>	<b>131.4</b>
TD51 Sloping channel	96349	05390	39.37	1000	16.22	412	16.46	418	135.4
TD52 Sloping channel	96353	05391	39.37	1000	16.46	418	16.69	424	136.6
TD53 Sloping channel	96357	05392	39.37	1000	16.69	424	16.93	430	137.8
TD54 Sloping channel	96362	05393	39.37	1000	16.93	430	17.17	436	139.0
TD55 Sloping channel	96368	05394	39.37	1000	17.17	436	17.40	442	139.9
TD56 Sloping channel	96374	05395	39.37	1000	17.40	442	17.64	448	143.9
TD57 Sloping channel	96375	05396	39.37	1000	17.64	448	17.87	454	145.5
TD58 Sloping channel	96382	05397	39.37	1000	17.87	454	18.11	460	147.1
TD59 Sloping channel	96386	05398	39.37	1000	18.11	460	18.35	466	148.7
TD60 Sloping channel	96394	05399	39.37	1000	18.35	466	18.58	472	150.3
<b>TD60 Neutral channel</b>	<b>96397</b>	<b>05374</b>	<b>39.37</b>	<b>1000</b>	<b>18.58</b>	<b>472</b>	<b>18.58</b>	<b>472</b>	<b>149.4</b>
<b>TD60 Outlet channel</b>	<b>96452</b>	<b>05378</b>	<b>39.37</b>	<b>1000</b>	<b>18.58</b>	<b>472</b>	<b>18.58</b>	<b>472</b>	<b>149.4</b>

Accessories continued overleaf.

Description	Part No	Length		Invert Depth - female		Invert Depth - male		Weight lbs
		inches	mm	inches	mm	inches	mm	
<b>In-line Catch Basin</b>								
TD900 In-line catch basin	<b>96478</b>	19.69	500	24.00	610	24.00	610	96.5
Type 900 trash bucket	<b>01498</b>	-	-	-	-	-	-	1.1
Foul air trap	<b>90854</b>	-	-	-	-	-	-	1.2
<b>Accessories</b>								
Type 824 4" - 6" outlet adapter	<b>95140</b>	-	-	-	-	-	-	1.1
Flume outlet - 8" vertical	<b>95279</b>	-	-	-	-	-	-	2.4
Flume outlet kit - 8" horizontal	<b>95290</b>	-	-	-	-	-	-	7.5
Flume outlet - 12" vertical	<b>95285</b>	-	-	-	-	-	-	4.5
Flume outlet kit - 12" horizontal	<b>95287</b>	-	-	-	-	-	-	9.6
Closing/4" Inlet/Outlet cap	<b>95063</b>	-	-	-	-	-	-	0.4
TD204-6 6" Inlet cap	<b>93903</b>	-	-	-	-	9.13	232	4.8
TD208-6 6" Outlet cap	<b>97048</b>	-	-	9.13	232	-	-	4.8
TD304-6 6" Inlet cap	<b>93905</b>	-	-	-	-	11.50	292	6.1
TD308-6 6" Outlet cap	<b>97052</b>	-	-	11.50	292	-	-	6.1
TD100 installation device - joint clamp	<b>95286</b>	22.25	565	-	-	-	-	3.3
TD100 installation device - hanger clip	<b>95289</b>	-	-	-	-	-	-	0.6

**Notes:**

1. TrafficDrain is sold complete, i.e., channel with grate & bolts. For replacement bolts - order Part No. 95526 (bolt) and 95525 (washer).
2. NRG - non-removable grate. Catch basin has removable grate to allow access to pipework
2. Add nominal 1" (25mm) to invert depth for overall trench unit depth.
3. Preformed 4" dia. & 6" flumed drill-outlet cast on underside of every channel (except outlet channel - 96448).
4. Closing/4" inlet/outlet cap can be cut down to suit all channels.
5. 6" Inlet & outlet caps cannot be cut to size.

### Other ACO Infrastructure Products

- **HighwayDrain** - 8" internal width monolithic trench drain
- **CurbDrain** - monolithic curb and drain unit
- **BridgeDrain** - 8" internal width fiberglass bridge scupper

### ACO, Inc.

#### West Sales Office

825 W. Beechcraft St.  
 Casa Grande, AZ 85122  
 Tel: (520) 421-9988  
 Toll Free: (888) 490-9552  
 Fax: (520) 421-9899

#### Northeast Sales Office

9470 Pinecone Drive  
 Mentor, OH 44060  
 Tel: (440) 639-7230  
 Toll Free: (800) 543-4764  
 Fax: (440) 639-7235

#### Southeast Sales Office

4211 Pleasant Road  
 Fort Mill, SC 29708  
 Toll Free: (800) 543-4764  
 Fax: (803) 802-1063

#### Electronic Contact:

info@acousa.com  
 www.acoinfrastructure.us

© May 2018 ACO, Inc.

All reasonable care has been taken in compiling the information in this document. All recommendations and suggestions on the use of ACO products are made without guarantee since the conditions of use are beyond the control of the company. It is the customer's responsibility to ensure that each product is fit for its intended purpose and that the actual conditions of use are suitable. ACO, Inc. reserves the right to change products and specifications without notice.

Re-order Part # RD008 v1.0

