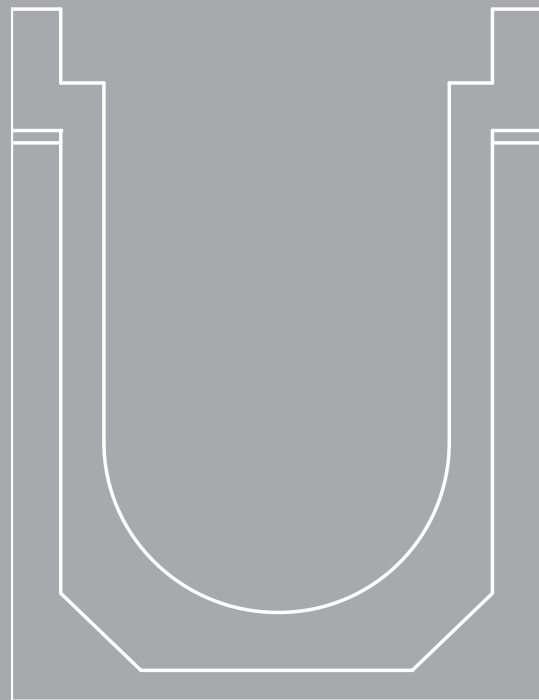




Surface Water Management



2021

Limited Availability
Drain Price List
2 of 5

ACO Drain

Effective June 1, 2021

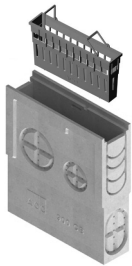
NW100 Channel -
39.37" (1 m)



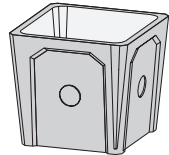
NW100 Channel -
19.69" (0.5 m)



N900 in-line Catch Basin -
19.69" (0.5 m)



2' x 2' x 2' Drain Sump



NW100 Parts Table^{1,2}

	Part No.	Price \$	Weight lbs	Pallet Qty
N1 Sloped channel - 39.37" (1 m)	138001	130.50	32.0	28
N02 Constant depth channel - 39.37" (1 m)	06562	130.50	34.0	28
N2 Sloped channel - 39.37" (1 m)	138002	130.50	34.0	28
N3 Sloped channel - 39.37" (1 m)	138003	130.50	36.0	28
N4 Sloped channel - 39.37" (1 m)	138004	130.50	36.0	28
N5 Sloped channel - 39.37" (1 m)	138005	130.50	37.0	28
N6 Sloped channel - 39.37" (1 m)	138006	130.50	37.0	28
N7 Sloped channel - 39.37" (1 m)	138007	130.50	37.0	28
N8 Sloped channel - 39.37" (1 m)	138008	130.50	39.0	28
N9 Sloped channel - 39.37" (1 m)	138009	130.50	41.0	28
N010 Constant depth channel - 39.37" (1 m)	06561	130.50	41.0	28
N0103 Constant depth channel - 19.69" (0.5 m) ³	138033	87.75	23.0	56
N10 Sloped channel - 39.37" (1 m)	138010	130.50	43.0	28
N11 Sloped channel - 39.37" (1 m)	138011	130.50	43.0	28
N12 Sloped channel - 39.37" (1 m)	138012	130.50	43.0	28
N13 Sloped channel - 39.37" (1 m)	138013	130.50	44.0	28
N14 Sloped channel - 39.37" (1 m)	138014	130.50	46.0	28
N15 Sloped channel - 39.37" (1 m)	138015	130.50	46.0	28
N16 Sloped channel - 39.37" (1 m)	138016	130.50	46.0	28
N17 Sloped channel - 39.37" (1 m)	138017	130.50	49.0	28
N18 Sloped channel - 39.37" (1 m)	138018	130.50	48.0	28
N19 Sloped channel - 39.37" (1 m)	138019	130.50	48.0	28
N020 Constant depth channel - 39.37" (1 m)	06563	130.50	49.0	28
N0203 Constant depth channel - 19.69" (0.5 m) ³	138035	87.75	26.0	56
N20 Sloped channel - 39.37" (1 m)	138020	130.50	49.0	28
N21 Sloped channel - 39.37" (1 m)	138021	130.50	50.0	28
N22 Sloped channel - 39.37" (1 m)	138022	130.50	52.0	28
N23 Sloped channel - 39.37" (1 m)	138023	130.50	52.0	28
N24 Sloped channel - 39.37" (1 m)	138024	130.50	55.0	28
N25 Sloped channel - 39.37" (1 m)	138025	130.50	55.0	28
N26 Sloped channel - 39.37" (1 m)	138026	130.50	56.0	28
N27 Sloped channel - 39.37" (1 m)	138027	130.50	57.0	28
N28 Sloped channel - 39.37" (1 m)	138028	130.50	57.0	28
N29 Sloped channel - 39.37" (1 m)	138029	130.50	58.0	28
N030 Constant depth channel - 39.37" (1 m)	138036	130.50	58.0	28
N0303 Constant depth channel - 19.69" (0.5 m) ³	138037	87.75	31.0	56
N30 Sloped channel - 39.37" (1 m)	138030	130.50	59.0	28
N900 In-line catch basin - 19.69" (0.5 m)	05620	201.75	61.3	12
Series 900 plastic trash bucket	01498	64.50	1.1	-
QuickLok® locking bar for catch basin (removable)	98717	23.24	0.1	-
N306 Closing end cap	137090	19.70	3.0	-
N104-4 Inlet cap with 4"	137091	31.25	3.0	-
N108-4 Outlet cap with 4"	137092	31.25	3.0	-
N204-4 Inlet cap with 4"	137093	31.25	3.0	-
N204-6 Inlet Cap 6"	137099	86.75	3.0	-
N208-4 Outlet cap with 4"	137094	31.25	4.0	-
N208-6 Outlet cap 6"	137095	86.75	3.0	-
N304-4 Inlet cap with 4"	137096	31.25	3.0	-
N308-4 Outlet cap with 4"	137097	86.75	4.0	-
N308-6 Outlet end cap 6"	137098	86.75	4.0	-
QuickLok® locking bar - 4" system	02899	9.45	0.1	-
Grate removal tool	01318	29.19	0.3	-

Notes

1. Grates - see QuickLok® grate pricing on the next page and page 2 in Drain Product Price List #1. DrainLok grates are not suitable for use with NW100.
2. Maximum Load Class C even if grate has higher load rating.
3. Bottom knockout included on 0.5 m channels.

SUMPS & PARTS

Sump box - 2' x 2' x 2'	05719	736.25	168.0	1
Gray iron frame & slot grate for 2' x 2' x 2'	05720	1,123.25	243.5	-
Sump box - 3' x 3' x 3'	05710	1,377.75	467.0	1
Gray iron frame & slot grate for 3' x 3' x 3'	05713	2,641.50	558.0	-
Sump box - 4' x 4' x 4'	05717	4,597.00	955.0	1
Gray iron frame & slot grate for 4' x 4' x 4'	05978	4,523.25	1220.0	-

QuickLok® K100/KS100 Grates		Length in (mm)	Part No.	Price \$	Weight lbs	Pallet Qty
LOAD CLASS A - EN 1433 - 3,372 LBS - 116 PSI						
	Type 420Q Galvanized slotted	39.37 (1000)	31530	33.75	5.5	200
	Type 421Q Galvanized slotted	19.69 (500)	31531	24.25	2.8	400
	Type 450Q Stainless slotted	39.37 (1000)	31630	171.75	5.9	200
	Type 452Q Stainless slotted	19.69 (500)	31631	115.50	2.8	400
	Type 430Q Stainless mesh	19.69 (500)	141744	535.75	8.0	400
	Type 451Q Stainless perforated	39.37 (1000)	98883	195.00	6.3	200
	Type 410Q Galvanized perforated ¹	39.37 (1000)	35908	56.50	6.3	200
	Type 412Q Galvanized perforated ¹	19.69 (500)	98879	41.75	3.2	400
	Type 494Q Black plastic longitudinal	19.69 (500)	97393	31.25	1.8	416
	Type 495Q Gray plastic longitudinal		97385	31.25		
LOAD CLASS C - EN 1433 - 56,202 LBS - 1,934 PSI						
	Type 425Q Galvanized slotted ¹	39.37 (1000)	31540	87.75	8.8	200
	Type 426Q Galvanized slotted ¹	19.69 (500)	31541	54.50	4.4	400
	Type 455Q Stainless slotted ¹	39.37 (1000)	31640	368.75	8.8	200
	Type 457Q Stainless slotted ¹	19.69 (500)	31641	188.00	4.4	400
	Type 411Q Galvanized perforated ¹	39.37 (1000)	98905	127.00	11.3	200
	Type 413Q Galvanized perforated ¹	19.69 (500)	98918	67.00	5.7	400

Notes

1. Must be ordered in pallet quantity

QuickLok® K200/KS200 Grates

LOAD CLASS C - EN 1433 - 56,202 LBS - 967 PSI						
	Type 681Q Ductile iron decorative	19.69 (500)	93956	136.00	27.0	60
	Type 679Q Ductile iron mosaic	19.69 (500)	93957	136.00	34.0	60

QuickLok® K300/KS300 Grates

LOAD CLASS C - EN 1433 - 56,202 LBS - 967 PSI						
	Type 847Q Stainless longitudinal	39.37 (1000)	98975	2,082.75	28.6	100
	Type 848Q Stainless longitudinal	19.69 (500)	98995	1,388.25	14.5	100
	Type 830Q Stainless mesh	19.69 (500)	16006	1,417.00	29.5	100
	Type 881Q Ductile iron decorative	19.69 (500)	93950	227.25	47.0	32
	Type 879Q Ductile iron mosaic	19.69 (500)	93958	227.25	47.3	32

ACO Terms & Conditions



Full ACO, Inc. Terms
and Conditions of Sale

PAYMENT - All pricing is in U.S. Dollars.

TERMS - Net 30 days from date of invoice. A service charge of 1.5% per month will be charged on all invoices unpaid 30 days after invoice date (equal to 18% annually).

FREIGHT - F.O.B. ACO

PRODUCT AVAILABILITY - Call Customer Service for current stock availability and lead times.

MISSING MATERIAL - Missing material must be reported to ACO's Customer Service Department within 48 hours of receipt of shipment.

DAMAGED MATERIAL - Damaged material must be noted on the bill of lading at final destination point. The receiver must file a freight claim with the carrier. ACO is not responsible for material damaged in transit.

TAXES - All State and Federal taxes are additional.

CHANGES - ACO, Inc. reserves the right to change prices, design, and materials of any products listed at any time.

RETURNS - Returned materials are subject to a 25% restocking charge. Prior return authorization (RGA) must be obtained from ACO before any material is shipped. Returned materials are subject to the following conditions:

- a) Items returned in a condition that does not allow for refurbish and resale will not be credited.
- b) Material must be returned to ACO within 30 days of receipt of RGA.
- c) All freight costs are the responsibility of those returning the material.
- d) All non-standard and fabricated material cannot be returned for credit.

MINIMUM ORDER - Minimum order is \$250.00. Orders under \$250.00 are subject to a \$50.00 handling fee.

ACO, Inc.

West Sales Office
825 W. Beechcraft Street
Casa Grande, AZ 85122
Tel: (520) 421-9988
Toll-Free: (888) 490-9552
Fax: (520) 421-9899

Northeast Sales Office
9470 Pinecone Drive
Mentor, OH 44060
Tel: (440) 639-7230
Toll-Free: (800) 543-4764
Fax: (440) 639-7235

Southeast Sales Office
4211 Pleasant Road
Fort Mill, SC 29708
Toll-Free: (800) 543-4764
Fax: (803) 802-1063

info@acousa.com
www.acousa.com

© July 2021 ACO, Inc.

All reasonable care has been taken in compiling the information in this document. All recommendations and suggestions on the use of ACO products are made without guarantee since the conditions of use are beyond the control of the company. It is the customer's responsibility to ensure that each product is fit for its intended purpose and that the actual conditions of use are suitable. ACO, Inc. reserves the right to change products and specifications without notice.
Print #DR801 V.5

ACO. creating
the future of drainage

