

ACO SPORT

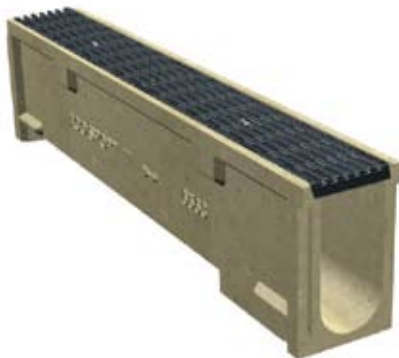
**Auburn University
Auburn, AL**



PROJECT PORTFOLIO

Product:

System 2000 & System 4000 with black plastic ADA grates



A combination of both slotted and grated trench drains were required during the refurbishment of the athletic facilities.

A grated system was required along the straightaways of the track as the field is natural turf and regular mowing creates clipping that would be more easily removed from a grated system. The 'D' areas however would require a slotted

system as the areas were used for other athletic disciplines and a slotted wouldn't create any visual distractions for athletes.

System 2000 and System 4020 offer similar invert depths for easy installation and the transition is simple when done at an in-line catch basin.