



ACO.

we care for water

## PORTFOLIO

### Smothers Waterfront Park Owensboro, KY

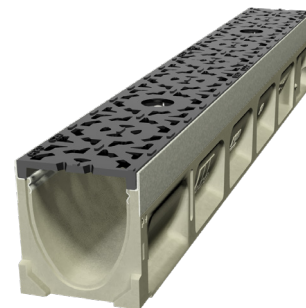
Smothers Park, which opened in August 2012, spans five acres along the Ohio River. The large riverfront pedestrian walkway will ultimately stretch west to the future convention center. The park's key feature is a signature water fountain show along the promenade that runs every 15 minutes.

#### Project Design Brief

Since the elevated fountains are kept away from the major pedestrian path, trench drains may be included in the design of the huge paved area. They would not only take any overflow and overspray from the fountains, but they would also serve as a general surface drain for rainfall accumulated on the paved walkway.

#### Benefits

- ACO's K100 and Type 479Q ADA-compliant grates provide a Load Class C strength which is up to 56,202 lbs. or 1,934 psi.
- The Quicklok® system securely locks the grate into the channel while also allowing quick and easy access to the channel for routine maintenance.



### ACO Drain®

KlassikDrain KS100 with Type 479Q

Mosaic Ductile Iron Grate

[acoswm.com/drain/klassikdrain](https://acoswm.com/drain/klassikdrain)

