

ACO DRAIN

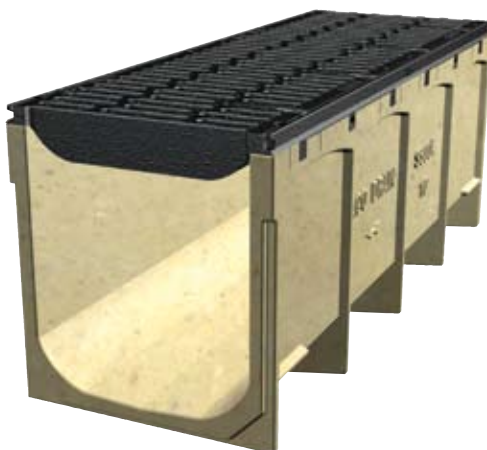
Willoughby Fire Station Willoughby, OH



ACO PORTFOLIO

Product:

S300K with ductile iron grates



The fire station had originally specified a 12" internal width cast-in-place trench system to deal with the large volumes of water from hose wash down.

The guaranteed consistent quality of a pre-cast, modular, sloped product, coupled with the speed and ease of installation, significantly reduced installation time and costs.

The ACO Drain S300K product was the ideal choice to deal with both the large volumes of water and the heavy duty traffic.

Pre-cast products are factory made and offer a consistent quality. All ACO products are independently tested to meet the loads specified.