



ACO. creating  
the future of drainage

## PORTFOLIO

### University of Georgia - Reed Plaza Sanford Stadium Athens, GA

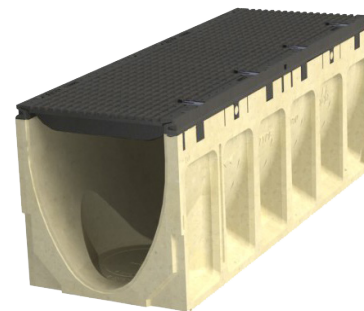
At the heart of UGA is a multi-functional amenity: Sanford Stadium. New transformation plans are in place for an area where over 30,000 square feet of space will be used on non-game days for student affairs activities and outdoor lectures.

#### Project Design Brief

As a newly designated pedestrian route between Sanford Drive and East Campus Road at the foot of Memorial Hall, it is critical to keep the walkway free of hazards caused by ponding or excess water. A high-quality drainage system is necessary to maintain safety. ACO's PowerDrain S300K was installed with ADA-compliant longitudinal grates to eliminate dangerous hazards caused by surface water.

#### Benefits

- The SK1 longitudinal ADA compliant grate is made with longitudinal slots that run in the same direction as the trench, allowing them to withstand the continual movement of heavy vehicle and pedestrian traffic.



**ACO Drain®**  
**PowerDrain® S300K**  
**Longitudinal Ductile Iron Grate**  
[acoswm.com/drain/powerdrain](https://acoswm.com/drain/powerdrain)

