

ACO DRAIN

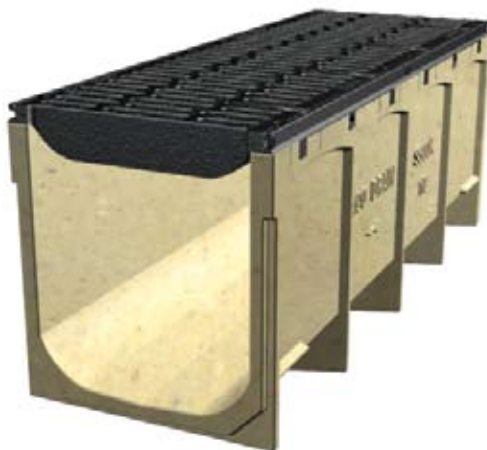
Tetra Tech Sludge Facility Green Bay, WI



PROJECT PORTFOLIO

Product:

S300K PowerDrain with ductile iron grates



Tetra Tech is a wastewater company that improves water quality and conserves water resources by conveying, treating, and reclaiming wastewater safely and responsibly.

PowerDrain S300K was chosen for its high hydraulic capacity to cope with overflowing water, and chemical spills that may occur during the reclamation process. The ductile iron grates will withstand the

majority of the chemicals that may come in contact with them.

S300K is load tested to DIN 19580 Class F and would withstand traffic of heavy equipment and service vehicles.