

# ACO DRAIN

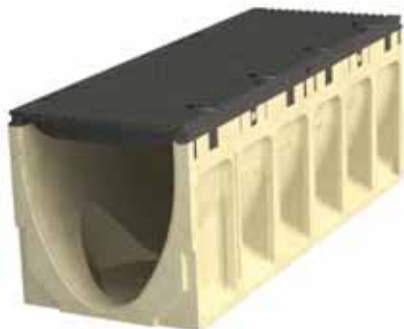
## Grassy Key Fire Station Marathon, FL



### PROJECT PORTFOLIO

**Product:**

*S300K with ADA ductile iron grates*



The City of Marathon on Grassy Key needed a solution for capturing storm water run-off from the fire station, as the site was built up from the road during construction. Given the vast amounts of rainfall south Florida receives, it was a necessity to use a 12" wide drainage system.

PowerDrain S300K was used on this job as it features an integrally cast-in ductile iron edge rail, and longitudinally slotted ADA compliant ductile iron grates with a Load Class F (90 ton) loading. This would ensure the drainage system can withstand the heavy duty traffic of fire engines crossing over and turning on the drainage system and is still safe for pedestrians to cross.