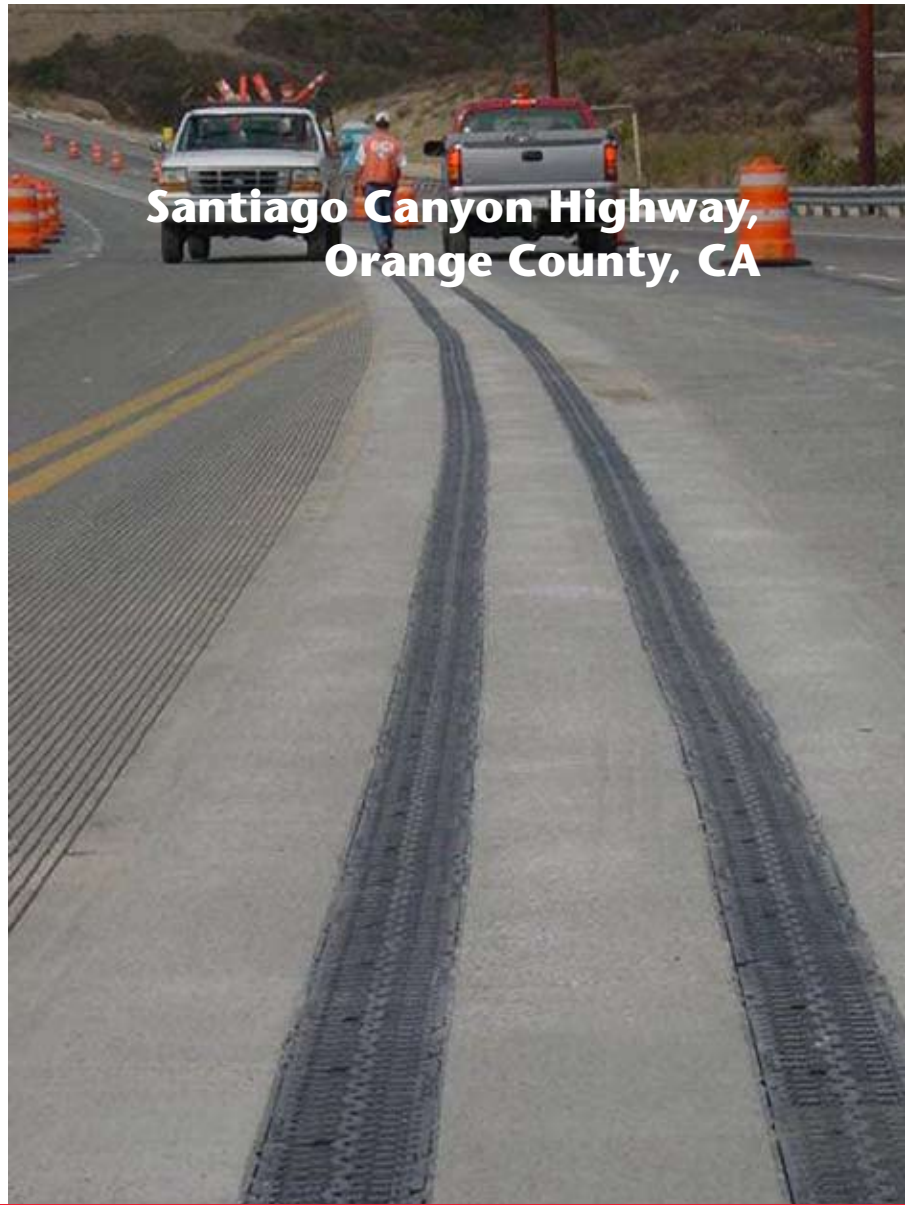


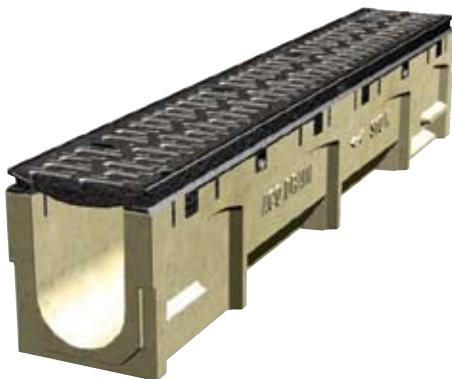
ACO DRAIN



ACO PORTFOLIO

Product:

S100K PowerDrain with Ductile Iron slotted grates



The steepness and camber of the road running through Santiago Canyon was found to produce water flow across the road in heavy rain.

To solve the problem, Orange County decided to install trench drain down the middle of the road in the central median strip. ACO helped solve the problem in the most economical way by using the very heavy duty S100K PowerDrain. ACO Design Services helped the Engineers by means of the 'Hydro' trench hydraulic program to optimize the trench configuration and

'GIC' grating intake program to ensure the grate chosen would intercept all the water in the heaviest rain. In certain areas due to the steepness or road camber, a double run of S100K was used to ensure absolutely no water ran from the downhill lane to the uphill lane. The double run was a more cost efficient method than using wider drains.

1,722 feet of S100K was used with 5' off Type 900 catch basins custom fitted with 12" pipe outlets.