

# ACO DRAIN

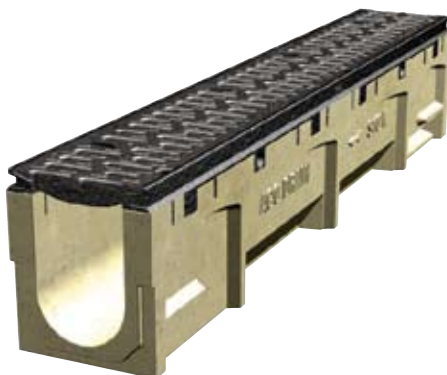
## Fire Station Mantua, OH



### ACO PORTFOLIO

**Product:**

***S100K PowerDrain with ductile iron slotted grates***



The design of the new fire station included trench runs located centrally through the truck parking bays to collect wash down water.

The drive slopes toward the building, and at the request of the local fire chief, a run of trench drain was added to act as a threshold drain and intercept rain water.

In the months after installation was complete the area experienced unusually wet weather. The trench intercepted all the run off, preventing any rainwater from running into the building.

The ACO Drain S100K product was the ideal choice to deal with both the large volumes of water and the heavy duty traffic.