

ACO DRAIN

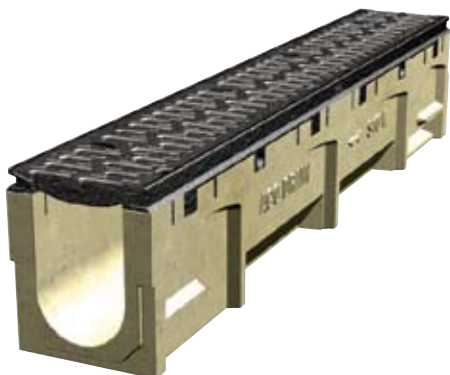
Hampton Bay Firehouse Hampton Bay, NY



PROJECT PORTFOLIO

Product:

S100K PowerDrain with ductile iron slotted grates



A new fire house substation was needed as volunteers would often get delayed on Montauk Highway, where the main firehouse is located, when responding to alarms in the summer months.

The design of the new fire house substation included trench runs located centrally in front of the truck parking bays to collect wash down water.

The drive slopes toward the building, and at the request of the local fire chief, a run of trench drain was added to act as a threshold drain to intercept rain water.

The ACO Drain S100K product was the ideal choice to deal with both the large volumes of water and the heavy duty traffic.