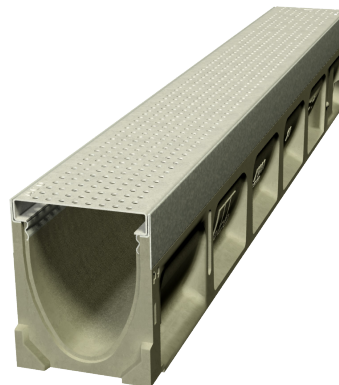




ACO Drain
KlassikDrain KS100 with Type 451Q
Perforated Stainless Steel Grates
www.acodrain.us



ACO. creating
the future of drainage

PORTFOLIO

Gratton Rancheria Casino Swimming Pool Ronherth Park, CA

Gratton Rancheria Casino is an upscale Northern California casino which provides lavish accommodations for their guests including a beach entry pool.

Project Design Brief

To ensure flip flops and heels alike can withstand the drains surrounding the swim area, sleek stainless steel and ADA-compliant perforated grates were placed in 584 linear feet of channels.

Benefits

- ACO KlassikDrain KS100 features a 4" (100 mm) internal width channel system with built-in 0.5% slope and developed V-shape profile for enhanced hydraulic performance.
- The 451Q perforated stainless steel grates with the QuickLok® locking system meet ADA-compliance and are heel resistant.

