

ACO Drain[®]

Brickslot

4" & 8" Internal Width, Discreet Slot Drain



ACO. creating

the future of drainage

The ACO Group

Founded in 1946, the ACO Group is a world leader in drainage technology. Climate change sets us a challenge to react effectively with innovative solutions to new environmental conditions. With its integrated approach, ACO provides systems for professional surface water drainage, efficient cleaning, and the controlled discharge or reuse of water.

Products include:

- surface water drainage
- oil, sediment, heavy metal and grease separators
- detention, retention and infiltration systems
- flow control release products

Major innovative strengths of the ACO Group are its continuous research & development and technical expertise in the processing of polymer concrete, plastics, cast iron, stainless steel and cement concretes.

ACO in the USA

ACO, Inc. was founded in Ohio, 1978. Since then, continuous growth in the USA has seen the company expand and build manufacturing facilities in Mentor, OH, and Casa Grande, AZ. The company has further locations in Phoenix, AZ, and Fort Mill, SC. Today, ACO USA has sales personnel across the country and an extensive distribution network through all states, the Caribbean and Central America.

ACO Drain®

ACO Drain is the market leading modular trench drain system manufactured at the company's modern facilities in Arizona and Ohio.

ACO Drain offers the most comprehensive range of trench drain solutions for every application. ACO Drain products are offered in a variety of widths, depths, and load ratings, with grates to suit. In conjunction with a comprehensive, quality product range, ACO supports its business with extensive stocking distributors, technical sales support and world-class customer service.



ACO Drain Brickslot

ACO Brickslot is a discreet drainage solution for use with 3.125" (79 mm) or less brick or stone pavers. The slots blend in with the paving joints giving an aesthetic solution.

- Brickslot 100 offers a single offset slot or a twin heel-resistant, ADA compliant slot option.
- Brickslot 200 offers increased capacity via a double spaced Twinslot or a central twin heel-resistant, ADA compliant slot.

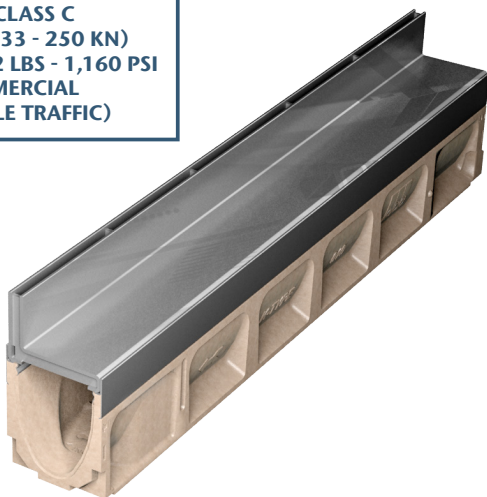
Stainless steel Brickslot is the same system but is manufactured from grade 304 stainless steel. Stainless steel Brickslot should be used where increased aesthetics are desired or where increased corrosion resistance is required.

Compatible with most paving materials, the vertical sides of the grating enable pavements to be laid directly to the unit edge. Once installed, the system is completely secure and not vulnerable to vandalism or loose gratings. This makes the system suitable for applications such as schools and playgrounds where grating removal can become a hazard.

The ACO Drain KlassikDrain channel and ACO Brickslot grate together provide an unobtrusive, continuous slot drainage system, with high hydraulic efficiency for fast removal of surface water. ACO Brickslot grates are available in galvanized or stainless steel and suitable for use with the 4" (100 mm), and 8" (200 mm) wide channels in the ACO KlassikDrain or SlabDrain range.

The system includes an ACO Brickslot access unit to ensure easy maintenance and access to the drainage system, and is also fully compatible with the range of ACO accessories.

LOAD CLASS C
(EN 1433 - 250 KN)
56,202 LBS - 1,160 PSI
(COMMERCIAL
VEHICLE TRAFFIC)



POPULAR APPLICATIONS

- Sidewalks
- Pools
- Water Features
- Threshold Drainage
- Public Landscaping



Brickslot 100

Features & Benefits

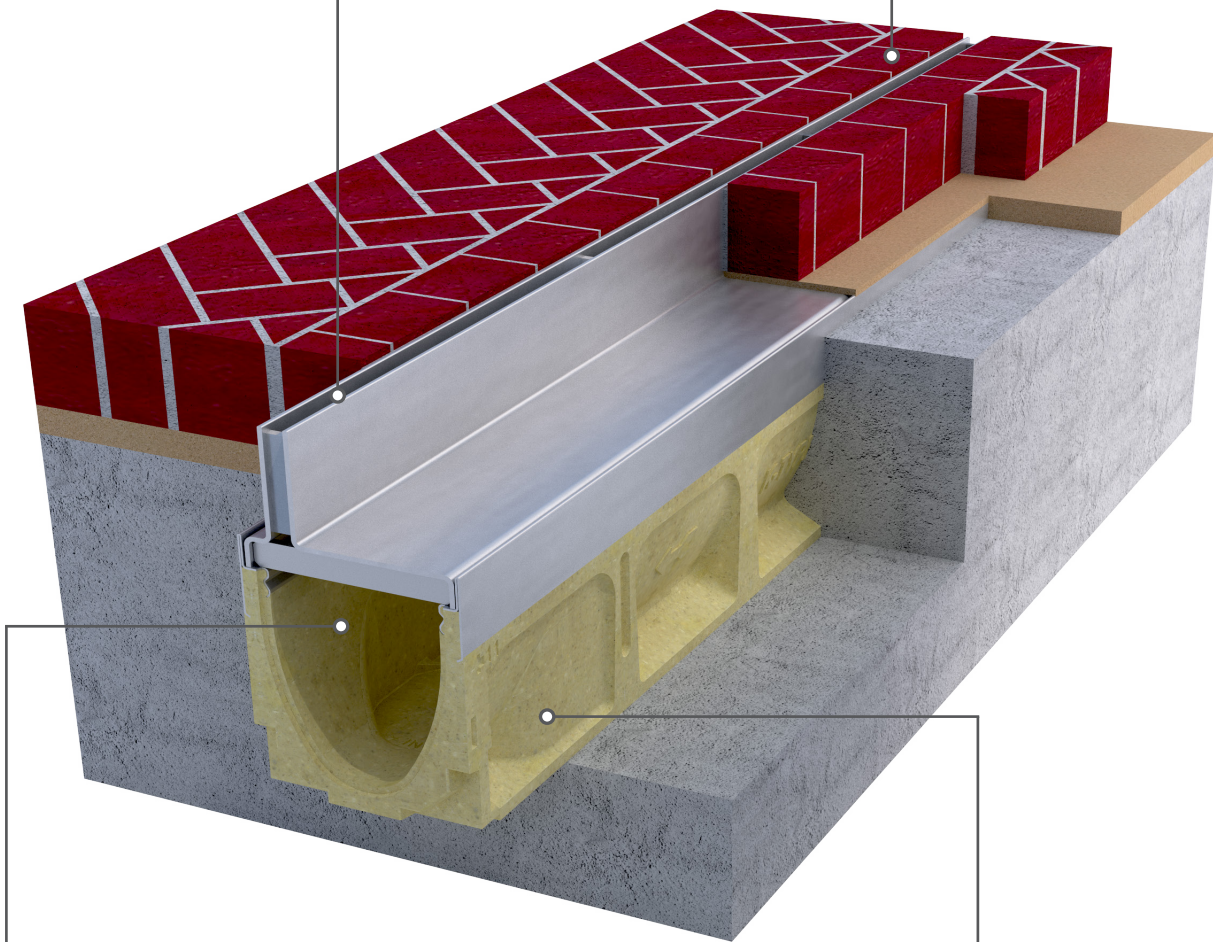


1/2 in. (12mm) Slot

Easy to clean smooth slots allow continuous water flow into channel (shown). Heel resistant Brickslot offers an offset, double 3/8" (8mm) flared slot opening to 7/8" (22mm) throat for increased drainage capacity (not shown).

Brick Pavers

Fit directly against slot. For light duty pedestrian applications, pavers can be set on sand. For heavier duty projects, pavers should be set on concrete. Designed for 80mm pavers - includes 1/8" (3mm) bedding.



End Caps and Accessories

Available from the K100 range. See KlassikDrain brochure or Technical Handbook for details.

Use With K100 Channel

Brickslot fits directly into K100 channel grate recess. Half meter sections are available. Half meter access units provide access to channel or catch basin for maintenance. See KlassikDrain brochure or Technical Handbook for details.

Brickslot 200

Features & Benefits

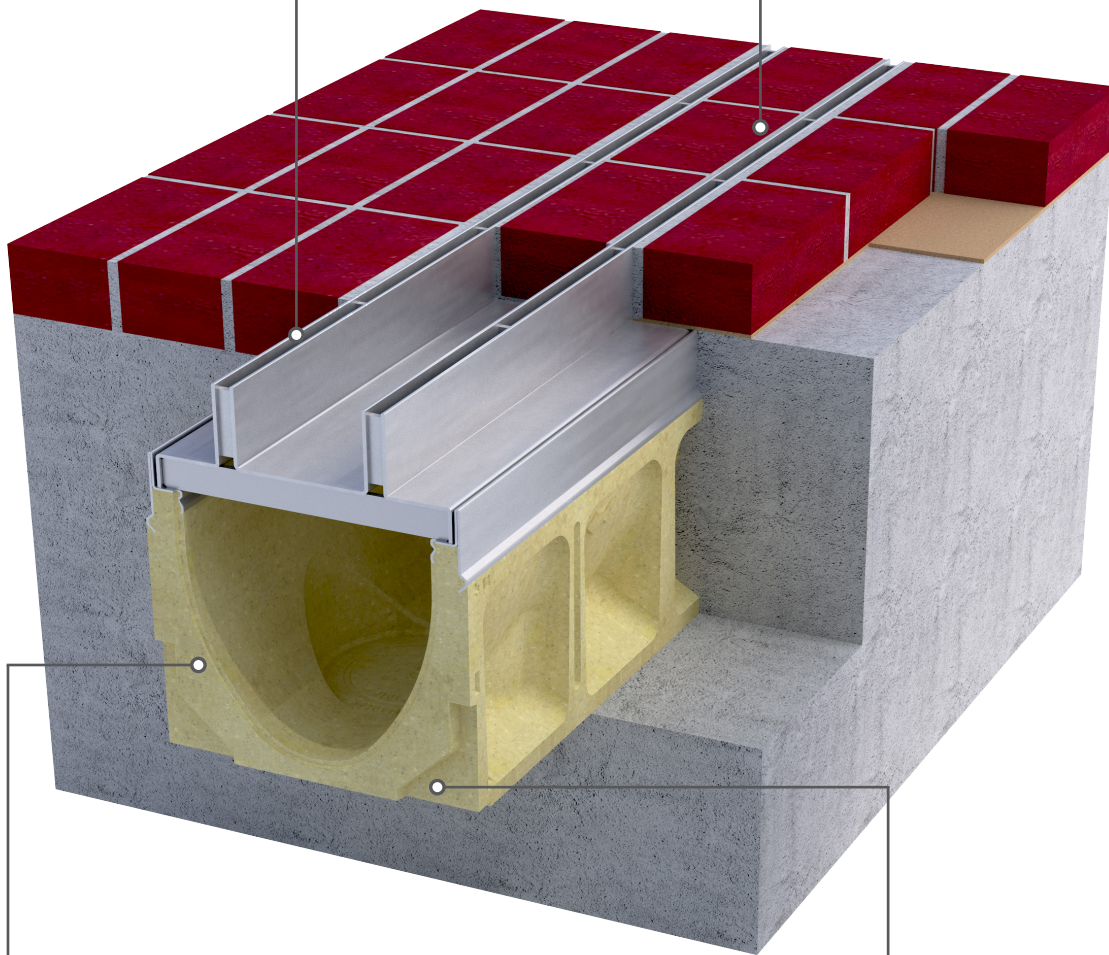


Two Parallel 1/2 in. (12mm) Slots

Easy to clean smooth slots allow continuous water flow into channel (shown). Heel resistant Brickslot 200 offers a central, double 3/8" (8mm) flared slot opening to 7/8" (22mm) throat for increased drainage capacity (not shown).

Brick Pavers

Fit directly against slot. For light duty pedestrian applications, pavers can be set on sand. For heavier duty projects, pavers should be set on concrete. Designed for 80mm pavers - includes 1/8" (3mm) bedding.



End Caps and Accessories

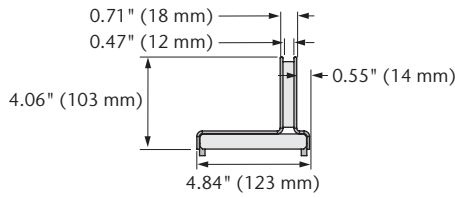
Available from the K200 range. See KlassikDrain brochure or Technical Handbook for details.

Use With K200 Channel

Brickslot fits directly into K200 channel grate recess. Half meter sections are available. Half meter access units provide access to channel or catch basin for maintenance. See KlassikDrain brochure or Technical Handbook for details.

Brickslot 100

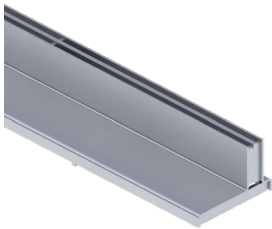
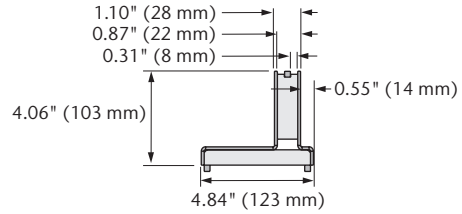
Brickslot 100



Brickslot 100 - for K100/KS100

Type 441/443 - Brickslot 100 - 39.37" (1 m)
 Type 442/444 - Brickslot 100 - 19.69" (0.5 m)
 Type 482/484 - Brickslot 100 - Access Unit - 19.69" (0.5 m)

Heel-Resistant Brickslot 100



Heel-Resistant Brickslot 100 - for K100/KS100

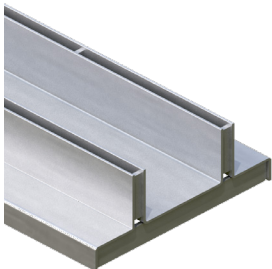
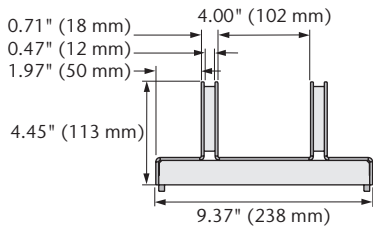
Type 470/472 - Heel-Resistant Brickslot 100 - 39.37" (1 m)
 Type 471/473 - Heel-Resistant Brickslot 100 - 19.69" (0.5 m)
 Type 483/485 - Heel-Resistant Brickslot 100 Access Unit - 19.69" (0.5 m)

Part No.		Overall Depth in (mm)	Weight lbs			
Galvanized	Stainless					
138040	138045	4.06 (103)	17.6	✓	✗	✓
138041	138046	4.06 (103)	9.0	✓	✗	✓
138042	138047	4.06 (103)	16.4	✓	✗	✓

Part No.		Overall Depth in (mm)	Weight lbs			
Galvanized	Stainless					
138050	138055	4.06 (103)	18.0	✓	✓	✓
138051	138056	4.06 (103)	9.2	✓	✓	✓
138152	138057	4.06 (103)	11.0	✓	✓	✓

Brickslot 200

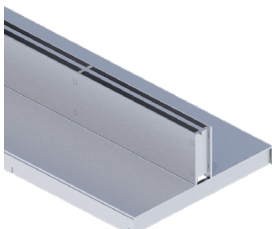
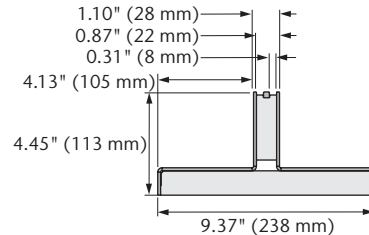
Twinslot 200



Twinslot 200 - for K200/KS200

Type 641/643 - Twinslot 200 - 39.37" (1 m)
 Type 642/644 - Twinslot 200 - 19.69" (0.5 m)
 Type 682/684 - Twinslot 200 Access Unit - 19.69" (0.5 m)

Heel-Resistant Brickslot 200



Heel-Resistant Brickslot 200 - for K200/KS200

Type 670/673 - Heel-Resistant Brickslot 200 - 39.37" (1 m)
 Type 672/674 - Heel-Resistant Brickslot 200 - 19.69" (0.5 m)
 Type 683/685 - Heel-Resistant Brickslot 200 Access Unit - 19.69" (0.5 m)

Part No.		Overall Depth in (mm)	Weight lbs			
Galvanized	Stainless					
138060	138065	4.45 (113)	36.3	✓	✗	✓
138061	138066	4.45 (113)	18.7	✓	✗	✓
138062	138067	4.45 (113)	22.4	✓	✗	✓

Part No.		Overall Depth in (mm)	Weight lbs			
Galvanized	Stainless					
138070	138075	4.45 (113)	28.2	✓	✓	✓
138071	138076	4.45 (113)	17.8	✓	✓	✓
138072	138077	4.45 (113)	20.4	✓	✓	✓



System Access

Brickslot is a discreet, drainage solution for use with brick or stone pavers. The slot(s) blends in with paving joints giving an aesthetic solution.

The practicality of access to the system for maintenance is dealt with by an access cover. These are typically used on an in-line catch basin, but can also be used for projects where catch basins are not being used, or on channels to provide additional access at the start or part-way through a run.

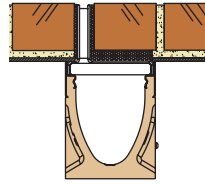
The access units provide the same discreet slot as the channel and can be removed for full access. The pavers are cut to fit and are bonded into the recessed cover, seamlessly blending into the paving design.



For information relating to channel systems for supporting Brickslot units and water removal, please refer to the ACO Drain Technical Handbook or visit: www.acoswm.com/drain/klaskidrain

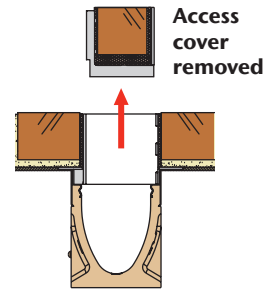
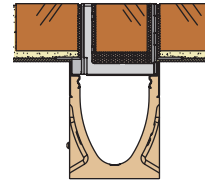
Brickslot cover with channel

Brickslot 100



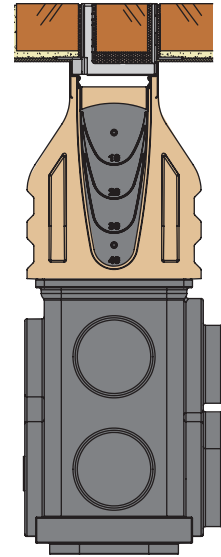
Access unit with channel

- Use at start of run and/or where bottom or end outlet is used for maintenance.

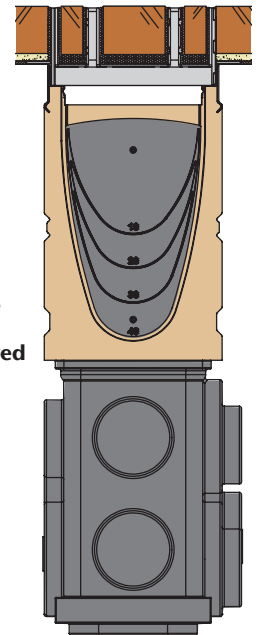
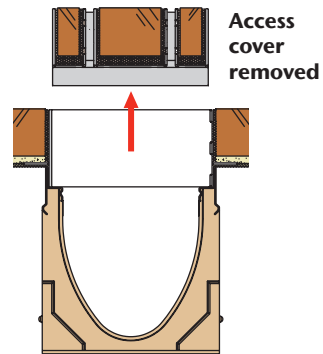
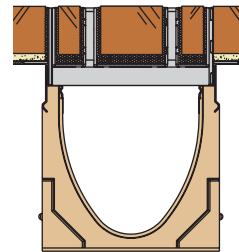
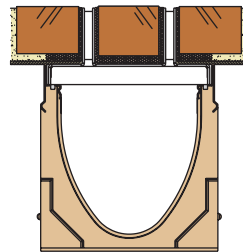


Access unit with catch basin

- Provides access to trash bucket and outlet pipes for maintenance.



Brickslot 200



ACO products support the ACO System Chain



Surface Water Management

- ACO Drain - Commercial Trench Drains
- ACO Infrastructure - Heavy Duty Drainage
- ACO Sport - Athletic Venue Drainage
- ACO StormBrixx - Geocellular Tanks
- ACO Aquaduct - Custom Drainage
- ACO Environment - Solid & Oil Separators
- ACO Wildlife - Guidance & Passage
- ACO Self - Garden & Landscape Drainage
- ACO UtilityDuct - Linear Ducting System

Building Drainage

- ACO Stainless - Stainless Trench Drains
- ACO BoxDrain - Stainless Floor Troughs
- ACO FloorDrain - Stainless Point Drains
- ACO Pipe - Stainless Push-fit Piping
- ACO ShowerDrain - Bathroom Drainage

ACO, Inc.

West Sales Office
825 W. Beechcraft Street
Casa Grande, AZ 85122
Tel: (520) 421-9988
Toll-Free: (888) 490-9552
Fax: (520) 421-9899

Northeast Sales Office
9470 Pinecone Drive
Mentor, OH 44060
Tel: (440) 639-7230
Toll-Free: (800) 543-4764
Fax: (440) 639-7235

Southeast Sales Office
4211 Pleasant Road
Fort Mill, SC 29708
Toll-Free: (800) 543-4764
Fax: (803) 802-1063

info@acousa.com
www.acousa.com

© March 2022 ACO, Inc.

All reasonable care has been taken in compiling the information in this document. All recommendations and suggestions on the use of ACO products are made without guarantee since the conditions of use are beyond the control of the company. It is the customer's responsibility to ensure that each product is fit for its intended purpose and that the actual conditions of use are suitable. ACO, Inc. reserves the right to change products and specifications without notice.

Print #DR205

ACO. creating
the future of drainage

