

## Airports

### LOCATION

#### United States

- Northwest Arkansas Regional Airport (Fayetteville, AR)
- NWARA General Aviation Taxilane (Bentonville, AR)
- DHL Ramp (Perris, CA)
- DHL Dock (Harris, CA)
- Cincinnati/Northern Kentucky International Airport (Erlanger, KY)
- England Airpark (Alexandria, LA)
- Minneapolis St. Paul Airport (Minneapolis, MN)
- MPLS/St Paul Int'l Airport Fueling Facility (Minneapolis, MN)
- Charlotte Douglas International Airport (Charlotte, NC)
- Dayton International Airport (Dayton, OH)
- Wright Patterson Air Force Base (Dayton, OH)
- Pittsburgh International Airport Deicing Facility (Pittsburgh, PA)
- Nashville International Airport (Nashville, TN)
- Boeing Corporation (Austin, TX)
- Dallas Fort Worth International Airport (Dallas, TX)
- George Bush Houston Intercontinental Airport (Houston, TX)
- William P. Hobby International Airport (Houston, TX)
- Air Force B2 Apron (Diego Garcia)

### ACO PRODUCT

- 8" Custom Trench Drain
- 8" Custom Trench Drain
- 8" Custom Trench Drain
- 8" Custom Trench Drain
- 9.5" Custom Trench Drain
- 8" Custom Trench Drain
- 8" Custom Trench Drain
- 6" Custom Trench Drain
- 18" Custom Trench Drain
- 8" Custom Trench Drain
- 8" Custom Trench Drain
- 12" Custom Trench Drain
- 8" Custom Trench Drain
- 12" Custom Trench Drain
- 8" Custom Trench Drain
- 8" & 12" Custom Trench Drain
- 12" Custom Trench Drain
- 12" Custom Trench Drain



## Ports and Docks

### LOCATION

#### United States

- Port Canaveral (Cape Canaveral, FL)
- Port Manatee (Palmetto, FL)
- Bath Iron Works (Bath, ME)
- Red Hook Port Authority Container Terminal (Brooklyn, NY)
- Fresh Kills Landfill (Staten Island, NY)
- Port of Vancouver (Vancouver, WA)

### ACO PRODUCT

- 8" Custom Trench Drain
- 18" Custom Trench Drain
- 8" Custom Trench Drain
- Custom Trench Drain
- Custom Trench Drain
- 12" Custom Trench Drain
  
- 8" Custom Trench Drain

#### Canada

- Esquimalt Graving Dock (Esquimalt, BC)



## Automobile Manufacturers and Dealerships

### LOCATION

#### United States

Hyundai Motor Manufacturing Plant (Montgomery, AL)  
Enkei Automobile Wheels & Accessories (Jacksonville, FL)  
Daimler Chrysler Kokomo Transmission Plant (Kokomo, IN)  
General Motors (Marion, IN)  
Daimler Chrysler Detroit Axle (Detroit, MI)  
GM Blanker Press Project (Flint, MI)  
GM Delta Plant (Lansing, MI)  
Walmart Auto Service Center (Suffolk County, NY)  
Honda Marysville (Toledo, OH)  
Daimler Chrysler Plant - A (Kenosha, WI)

#### Mexico

Daimler Chrysler Paint Shop (Toluca, Mexico)

### ACO PRODUCT

8" Custom Trench Drain  
8" Custom Trench Drain  
4" & 8" Custom Trench Drain  
4" Custom Trench Drain  
8" Double Containment Trench  
4" Custom Trench Drain  
8" Custom Trench Drain  
8" Double Containment Trench  
8" Custom Trench Drain  
8" Double Containment Trench  
  
8" & 12" Double Containment Trench



## Industrial Plants

### LOCATION

#### United States

Hexcel Corporation (Birmingham, AL)  
Copper Mine Project (Phoenix, AZ)  
Borax Plant (Boron, CA)  
China Lake Naval Weapons Facility (China Lake, CA)  
GKN Aerospace Bldg 4B (El Cajon, CA)  
Port St. Joe Paper Project (Port Saint Joe, FL)  
Milliken & Co. (LaGrange, GA)  
Allied Die Casting (Franklin Park, IL)  
American Art Clay (Indianapolis, IN)  
Proctor & Gamble (Alexandria, LA)  
Shell Chemical (Geismar, LA)  
Press Foundation & Die Wash Station (Dearborn, MI)  
Fertilizer Plant (Kearney, NE)  
Dupont Company (Rochester, NY)  
Pinelawn Power LLC (Babylon, NY)  
Public Service Electric & Gas (Mercer, NJ)  
Behr Thermal Products (Dayton, OH)  
Suhzer Pumps (US) Inc (Portland, OR)  
Owens Corning (Anderson, SC)  
Dupont Company (New Johnsonville, TN)  
Dow Chemical (Freeport, TX)  
International Paper Co. Renovation (Franklin, VA)  
Wisconsin Electric (Pleasant Prairie, WI)

#### Mexico

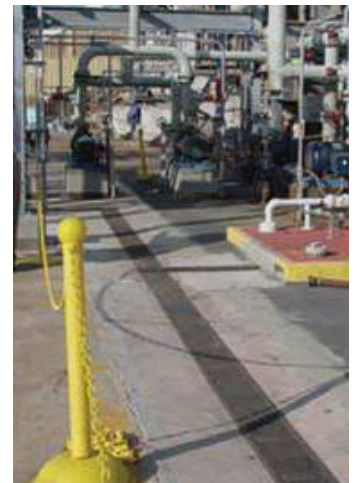
Dupont Company (Altamira, Mexico)

### ACO PRODUCT

4" Custom Trench Drain  
8" Custom Trench Drain  
24" Custom Trench Drain  
8" Custom Stainless Steel Trench  
8" Custom Trench Drain  
Custom Fibergrates  
8" Custom Trench Drain  
4" Custom Trench Drain  
8" Custom Trench Drain & Sumps  
8", 12" & 24" Custom Trench Drain  
Various Sizes Custom Trench Drains  
8" Custom Trench Drain  
8" Custom Trench Drain  
8" Custom Double Contained Trench  
8" Custom Trench Drain  
8" Custom Trench Drain  
8" Double Containment Trench Drain  
Trench Drain & 400 Gal Sump  
8" Custom Trench Drain  
8" Custom Double Contained Trench  
8" Custom Double Contained Trench  
8" & 10" Custom Trench Drain  
12" Custom Trench Drain



8" Custom Double Contained Trench



## Food and Beverage Processing Plants

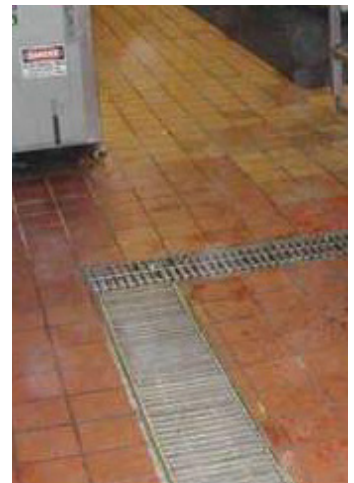
### LOCATION

#### United States

Beef Packers (Fresno, CA)  
Coca-Cola Plant (Los Angeles, CA)  
Bama Sea Products (St. Petersburg, FL)  
Fish Farm Project (Welaka, FL)  
Goldkist Poultry (Live Oak, FL)  
Cagle Foods (Camilla, GA)  
Cagle Foods (Pine Mountain, GA)  
Fieldale Corporation (Murrayville, GA)  
Pepsi Bottling (Detroit, MI)  
Prairie Farms Dairy Plant (Battle Creek, MI)  
Nitta Gelatin Corp (Fayetteville, NC)  
Dannon Yogurt Project (Minster, OH)  
Domaine Serene Winery (Dayton, OR)  
Stoller Winery (Portland, OR)  
Goldkist Poultry (Sumter, SC)  
Perdue Farms (Dillon, SC)  
Bush Brothers Plant Expansion (Dandridge, TN)  
Coca-Cola Bottling Co. of North Texas (Fort Worth, TX)  
Minute Maid (Houston, TX)  
Miller Brewing (Milwaukee, WI)  
Wampler-Longacre Poultry (Moorefield, WV)

### ACO PRODUCT

4" Custom Trench Drain  
8" Custom Trench Drain  
4" & 8" Custom Trench Drain  
12" Custom Trench Drain  
8" Custom Trench Drain  
Various Sizes Custom Trench  
Various Sizes Custom Trench  
8" Custom Trench Drain  
8" Custom Trench Drain  
4" Custom Trench Drain  
4" Custom Trench Drain  
4" Custom Trench Drain  
12" Custom Trench Drain  
4" Custom Trench Drain  
8" Custom Trench Drain  
8" Custom Trench Drain  
8" Custom Trench Drain  
8" Custom Trench Drain  
8" Custom Trench Drain  
Various Sizes Custom Trench





## Oil and Gas Companies

### LOCATION

#### United States

- California Oils (Richmond, CA)
- Chevron Refining Plant (San Leandro, CA)
- AMACO (Indianapolis, IN)
- Exxon Mobile Warehouse 9 (Baker, LA)
- RaceTrac Station (Laplace, LA)
- Conoco Phillips Petroleum (Linden, NJ)

### ACO PRODUCT

- 8" Custom Trench Drain
- 8" Custom Trench Drain
- 8" Custom Trench Drain
- 4" Custom Trench Drain
- 12" Custom Trench Drain
- 8" Custom Trench Drain



## Water Treatment Plants

### LOCATION

#### United States

- Alessandro Pumping Station (Riverside, CA)
- McCook Water Plant (McCook, NE)
- Shorelands Water Company Plant 1 (Hazlet, NJ)
- Elk Horn Pumping Station (Las Vegas, NV)
- Hunts Point Water Pollution Control Plant (Bronx, NY)
- Newtown Creek Water Pollution Control Plant (Brooklyn, NY)
- Witcher Sewage Pumping Station (Oklahoma City, OK)
- Nine Springs WWTP (Madison, WI)

### ACO PRODUCT

- 8" Custom Trench Drain
- 4" Custom Trench Drain
- 8" Custom Trench Drain
- 8" Custom Trench Drain
- 4" Custom Stainless Steel Trench
- 8" Custom Trench Drain
- Custom Catch Basins
- 8" Custom Trench Drain

